

**MINUTES OF BOARD OF HEALTH MEETING**  
**June 5, 2013**

Meeting was called to order by Chair Kraft at 6:00 p.m.

Board of Health Members Present: Chair Kraft, Supervisor Peer, Supervisor Bostwick (left at 7PM), Supervisor Rundle, Dr. Peterson, Dr. Winter, Eric Gresens RPH, and Ms. Wade

Board of Health Members Absent: Dr. Best

Staff Members Present: Karen Cain – Health Officer; Timothy Banwell – Environmental Health Director; Janet Zoellner – Public Health Nursing Director; Sancee Siebold – Nursing Supervisor South Office; Deborah Erickson – Nursing Supervisor North Office; and Elizabeth LaBelle – Administrative Secretary

**Adopt Agenda**

Supervisor Bostwick and Dr. Peterson made a motion to approve the agenda. MOTION APPROVED.

**Approval of Minutes 5/1/13**

Supervisor Peer and Dr. Winter made a motion to approve the minutes from 5/1/13 Board of Health meeting. MOTION APPROVED.

**Citizen Participation**

None at this time.

**Unfinished Business**

None at this time.

**New Business**

**Administrative Division**

**Approval of Bills/Transfer of Funds**

Ms.Wade and Supervisor Rundle made a motion to approve the bills. MOTION APPROVED.

Supervisor Peer inquired what types of bottles were purchased from Grainger for the Brownfields Grant. Environmental Health Director Banwell stated these were bottles for water testing. Chair Kraft verified that the IDEXX purchase should be \$178.70, not 17870 as typed on the list of bills. Environmental Health Director Banwell verified that is correct.

Supervisor Rundle inquired how long our shingles vaccine (Zostovax) lasts. This is dependent on number of clients coming into receive the vaccine. Supervisor Rundle also inquired if this could be added to our senior fairs. Nursing Director Zoellner will look into this and get back to Supervisor Rundle.

Supervisor Peer inquired if it is better to get the vaccine younger. Nursing Director Zoellner stated that Doctors can give at any time; however, doctors weigh the cost/benefit of giving a vaccine sooner because if a vaccine is given too soon, the protection will decrease over time. Supervisor Peer inquired how long a shingles vaccine is effective and Dr. Peterson inquired the average effectiveness of the vaccine. Nursing Director Zoellner stated that the vaccine is a one year dose each individual is different. The less an individual has the ability to fight infection, the less effective the vaccine will be. Dr. Winter inquired if there are titers available. Nursing Director Zoellner will get back to the Board of Health on this.

Mr. Eric Gresen, RPH, inquired if we bill for the shingles vaccine or if we absorb it. Nursing Director Zoellner stated that previously clients would have to pay up front for the vaccine and submit to their insurance. However, starting later this month (June 2013), we will be able to electronically submit client's vaccine claims and check their eligibility thru Transact RX (Medicare Billing Company).

### **Health Department Report**

Health Officer Cain announced that the annual Health Department staff photo was taken in May. The new photo was passed around and is also available on our website. Health Officer Cain announced that the former Health Educator had resigned and Katie Schroeder, CHES will now be writing the monthly Health columns that are found in local newspapers and our website.

Katie Schroeder, Community Transformation Grant project manager had a great success at Consolidated Elementary School (Milton School District). Consolidated Elementary participated in a "Farm to School" activity last week and kids loved the spinach! The spinach came from a local farmer and was prepared by UW-Extension. It was a great collaborative effort. Katie was on Madison TV explaining the event. She did a great job and Rock County got good exposure because of it. The board briefly discussed this event and the County Health Rankings.

Health Officer Cain shared that the Planning Department received a 2.5 million dollar grant to identify lead in homes, remediate the homes, and case managing in the home. The Health Department will provide services thru this grant as well. If a child tests positive for a lead test, the Health Department can help ensure that the child sees a doctor and sanitarians will be able to conduct lead assessment visits at the home. There is a meeting coming up later this month (June) and the Health Department will learn more details of the grant at the meeting. The Health Department was able to assist with this grant application, by adding what we see in the community on a daily basis. Environmental Health Director Banwell stated that currently only 4% of homes built before 1978 have been assessed in Rock County.

Health Officer Cain gave a summary on the suspicious mail package received at mail processing center in Janesville, WI on 5/3/13. An employee found an envelope with white powder. The Health Department was called to the scene. Package did not test positive for any of the 5 hazardous contaminants. Person listed as return address was interviewed and it was found out that the powder was baking flour. The response went much smoother from experience at the Beloit suspicious package incident.

On Friday, Health Officer Cain and some other staff members will attend "operation mayhem" in Madison with other hospitals and health departments in the region. This is to teach regions how to respond to disaster and gives local partners a chance to work together on an exercise.

Nursing Supervisor Erickson then gave a brief summary on a food borne outbreak investigated by the Health Department. It was a good learning experience for all on our team.

Chair Kraft shared the rabies clinic data maps with the board. The targeted areas in Rock County had a high attendance resulting in vaccinated animals. Maps were passed around for viewing.

**Resolution – accepting additional preparedness grant funding and amending the 2013 Rock County Health Department Budget**

**NOW, THEREFORE BE IT RESOLVED**, that the Rock County Board of Supervisors duly assembled on this \_\_\_\_\_ day of \_\_\_\_\_, 2013 does hereby authorize the Rock County Health Department to accept this additional Preparedness Grant funding in the amount of \$2,350 from the State of Wisconsin, and amend the 2013 Rock County Health Department Budget as follows:

<u>Account/Description</u>	<u>5/24/13</u>	<u>(Decrease)</u>	<u>Budget</u>
<u>Source of Funds</u>			
31-3001-0000-42100			
Consolidated Contracts	\$221,220	\$2,350	\$223,570
<u>Use of Funds</u>			
31-3001-0000-63110			
Consolidated Contracts Admin.Exp.	\$221,220	\$2,350	\$223,570

Supervisor Peer and Ms. Wade made a motion to approve the resolution. MOTION APPROVED.


Chair Kraft inquired what kind of projector we will be purchasing and why? Health Officer Cain explained that our current conference room projector is not properly working and asked the Board for Projector recommendations. Supervisor Bostwick recommended some Casio models with LED lights. They have a longer lamp life. These projectors will be looked into.

Health Officer Cain explained that we requested for \$12,000.00, however, we received less than requested. Our goal was to distribute cards to local businesses that explain what to do when you receive a suspicious package. However, with the lesser funds received we will be purchasing and disseminating clips with a “be prepared” message on them. The state identified items that they support with our grant funds, which is how we will utilize the grant dollars received.

**Public Health Nursing**

**Toddler Dog Safety-Pilot**

Nursing Director Zoellner gave a presentation on our new pilot program, Toddler Dog Safety that has started to roll out in the community. This program is to prevent child dog bites. We will be using our contacts we already have in the community with Head Start and the Color Me Healthy Program. Public Health Nurses will focus on educating toddlers early to help to children develop habits that help dog reduced provoked bites.

<b>LESSON</b>			
<b>1</b>			
<b>HOW TO MEET A DOG SAFELY</b>			
Time: 10 minutes	<b>Outcomes:</b> <ol style="list-style-type: none"> <li>Children will be able to show the teacher how to “ask” permission to pet a dog – teach movements:               <ul style="list-style-type: none"> <li>”Clap, clap, move your feet”</li> <li>”Tap, tap, hands on knees!”</li> </ul> </li> <li>Show where to pet a dog if the dog says “yes”</li> <li>Demonstrate what to do if a dog says “no”</li> </ol>	<b>Resources:</b> Youtube video: <a href="http://www.liamjperkfoundation.org/meetDog.html">http://www.liamjperkfoundation.org/meetDog.html</a> Sheet “How to Meet a Dog” Coloring sheets as needed “May I Pet Your Dog?” book	<b>Evaluation:</b> Return demonstration by children, role play
<b>LESSON 2</b>			
<b>WHAT TO DO WHEN A DOG APPROACHES “OFF LEASH”</b>			
Time: 10 minutes	<b>Outcomes:</b> <ol style="list-style-type: none"> <li>Children will be able to demonstrate “Be like a Tree”</li> <li>If a child falls or is knocked to the ground “be a log” and cover the head and neck</li> </ol>	<b>Resources:</b> <div style="text-align: center;"> <p><b>Be Like a Tree Around Loose / Excited Dogs:</b></p>  <p>Stand in place.      Keep hands in front.      Count until dog leaves.</p> </div> Coloring Sheets as needed	<b>Evaluation:</b> Return demonstration by children, role play
<b>LESSON 3</b>			
<b>HOW DOES A DOG LIKE TO BE TREATED?</b>			
Time: 10 minutes	<b>Outcomes:</b> Children will be able to identify: <ol style="list-style-type: none"> <li>Where to pet a dog</li> <li>Leave a dog alone when it is eating</li> <li>Don’t wrestle or tease a dog</li> <li>Don’t take its toys away</li> </ol>	<b>Resources:</b> Family Dog Safety coloring book (for content) Coloring sheets as needed	<b>Evaluation:</b> Teacher has question and answer with children to identify good behaviors to show around a dog.

Dogs do not find trees interesting they are boring to them. Be a Tree and a dog will sniff and then go away.



**Stand in Place**

Children should stand with their feet hip width apart in order to help keep their balance, with their feet planted like the roots of a tree.



**Keep Hands in Front**

Their hands should be held together like closed branches, with their eyes focused on their feet.



**Count Until The Dog Leaves**

Instruct children to count to the highest number they know, and keep doing this until the dog loses interest and goes away or help arrives.

**Be a tree in any of these situations:**

- A strange dog comes near you (even if he seems friendly).
- Any dog is making you feel uncomfortable, worried or scared.
- A dog is chasing you.
- Your own or a friend's dog is acting too frisky or excited.

Reference: <http://www.liamjperkfoundation.org/betree.html>

Supervisor Peer suggested having the book and coloring book (listed in chart above) available at different agencies/offices. Nursing Director Zoellner mentioned the goal of the lesson/curriculum is to keep it short, teachable and simple for a child to learn. Health Officer Cain mentioned the Gazette maybe looking into doing a story on this program.

## **Environmental Health**

### **Water Lab**

Environmental Director Banwell gave a Power Point Presentation on well sample summary for the county. We are trying to increase the number of people who sample their wells by utilizing Town Halls for sampling kit pick up and drop off sites.

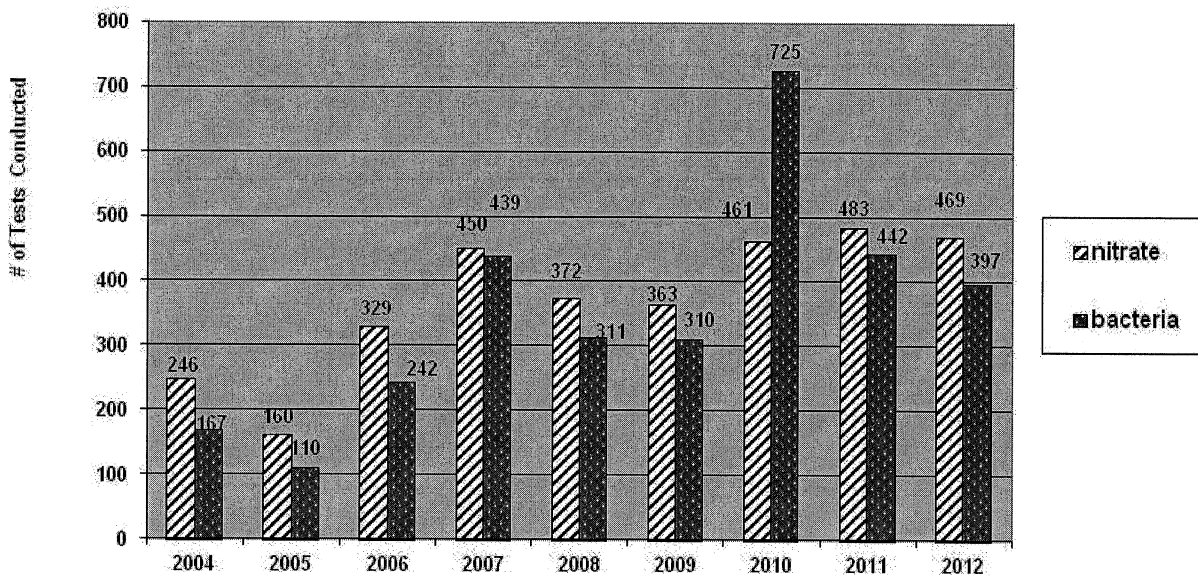
Environmental Health Director Banwell stated that we have applied for a Center for Disease Control (CDC) Grant to help analyze why nitrates levels are higher than in the past. This will give an opportunity to look at land use and wells.

Bacteria results are generally higher in wells during the summer months because bugs tend to get into the wells. A well seal with rubber ring and a screen can help prevent bugs entering. Supervisor Peer inquired if there is a problem with certain types of bugs. Environmental Health Director Banwell explained that earwigs are typically found in wells because they like dark damp environments.

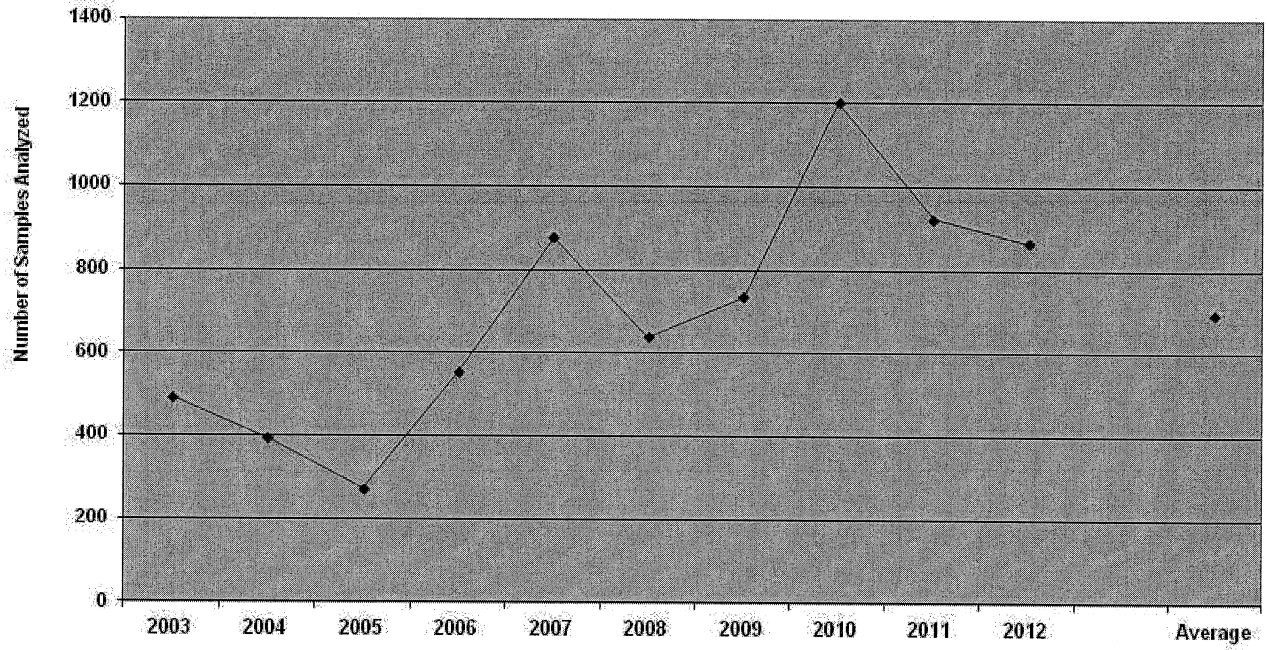
Environmental Health Director Banwell announced that 6/6/13 is the Town of Harmony well test kits pick up. The following week will be sample return and result discussion.

**The following graphs are results of the water testing Results in Rock County:**

### RCHD ANNUAL LAB TESTS



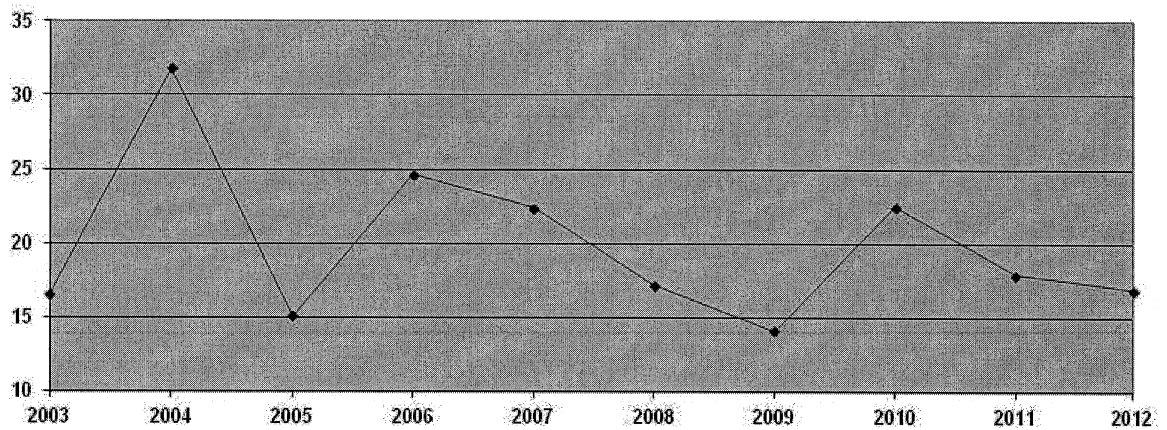
### Rock County Health Dept Lab



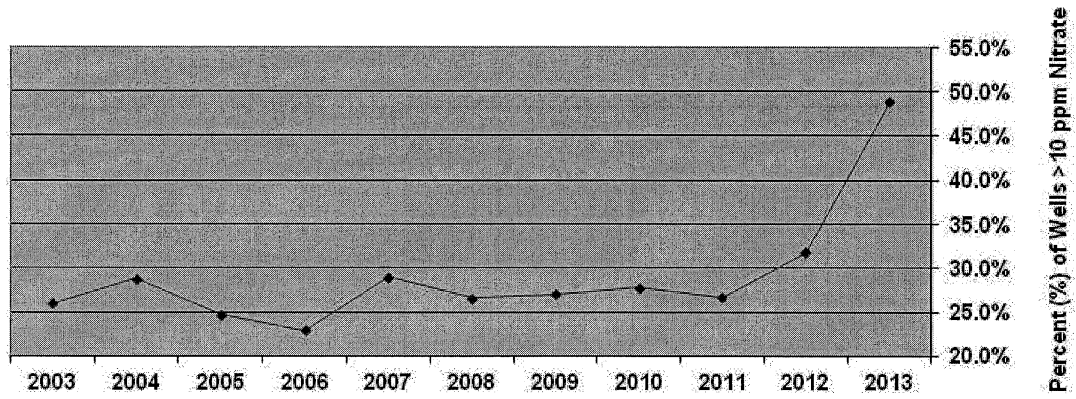


### Percent of Rock County Wells with Unsafe Bacteria Levels (Samples Analyzed at RCHD Lab)

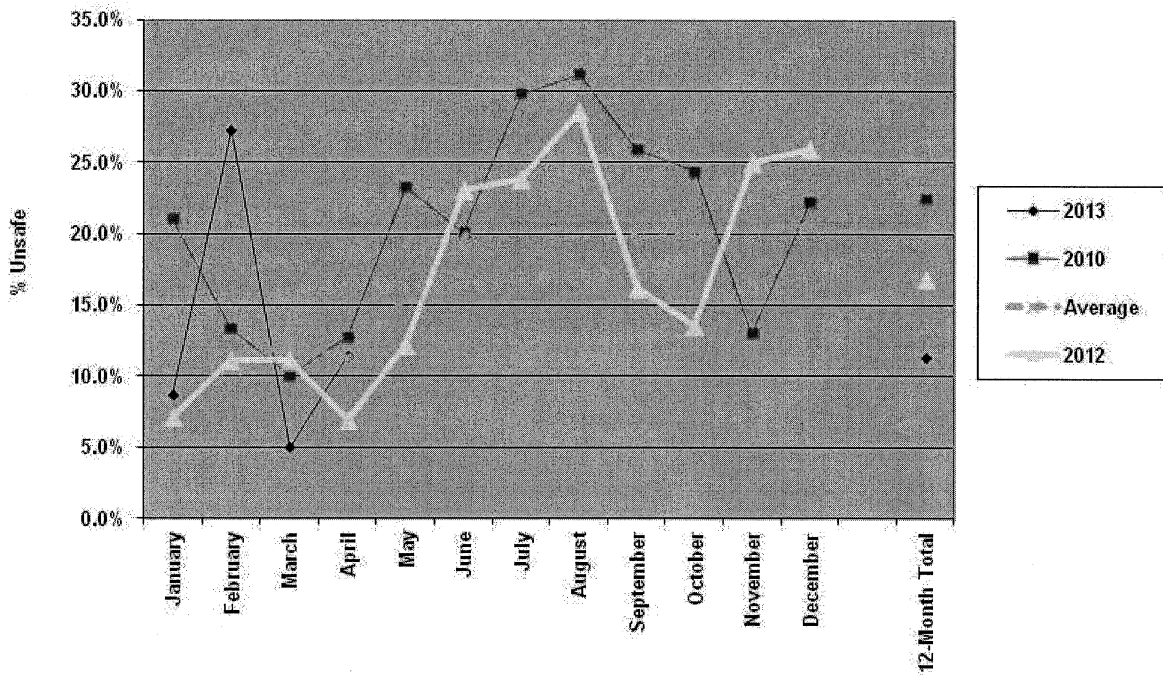
Percent (%) of Wells Coliform Positive

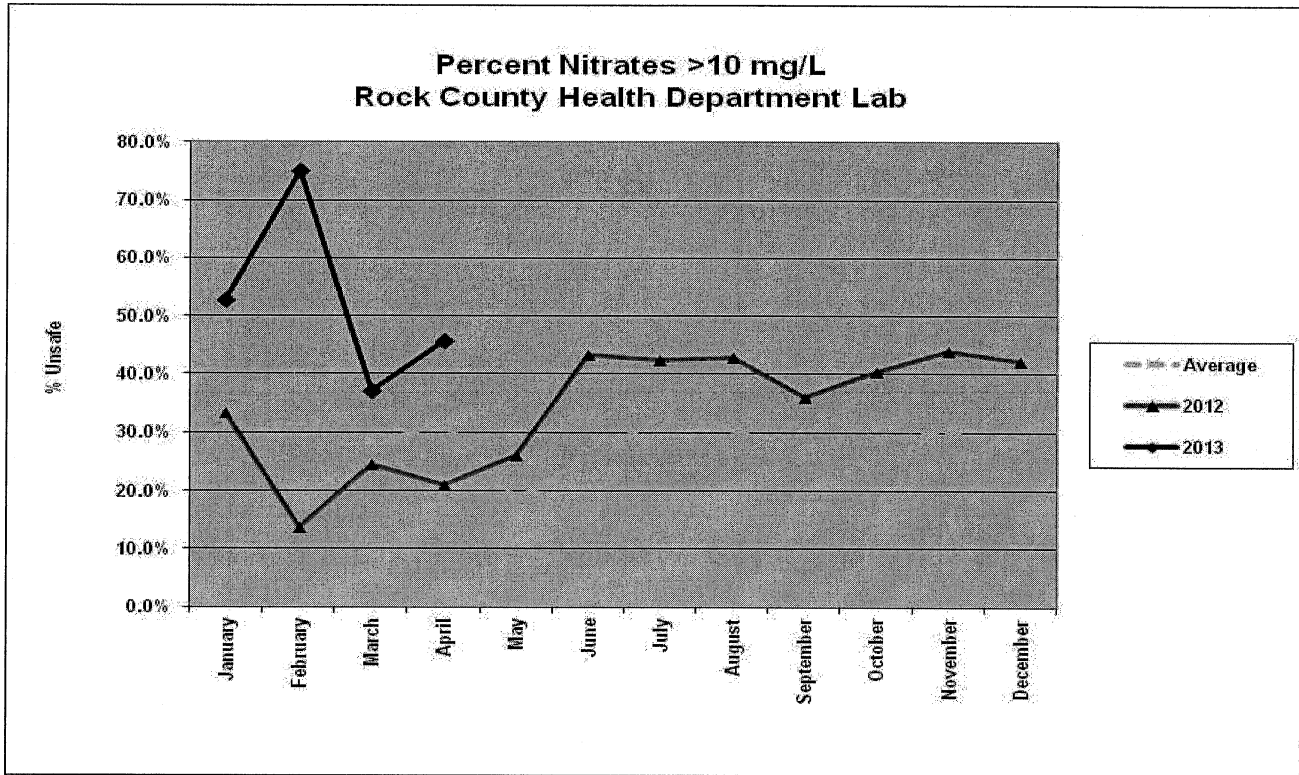


Percent of Rock County Wells  
with Unsafe Nitrate Levels  
(Samples Analyzed at RCHD Lab)



### Percent Unsafe Bacteria RCHD LAB





**Communications and Announcements**

New board member Mr. Eric Gresen RPH introduced himself to the Board. Mr. Eric Gresens RPH is a pharmacist at the Edgerton Pharmacy. Fellow board members then introduced themselves.

Health Officer Cain reminded the board that the next meeting is July 1, 2013. Elizabeth LaBelle will send out a reminder e-mail the week before and day of.

Board of Health Photo is rescheduled for the August Board Meeting.

**Adjournment**

Supervisor Rundle and Dr. Winter made a motion to adjourn the meeting. MOTION APPROVED. Meeting adjourned at 7:16 p.m.

Respectfully submitted,  
Elizabeth LaBelle, Recorder

Not Official Until Approved by the Board of Health