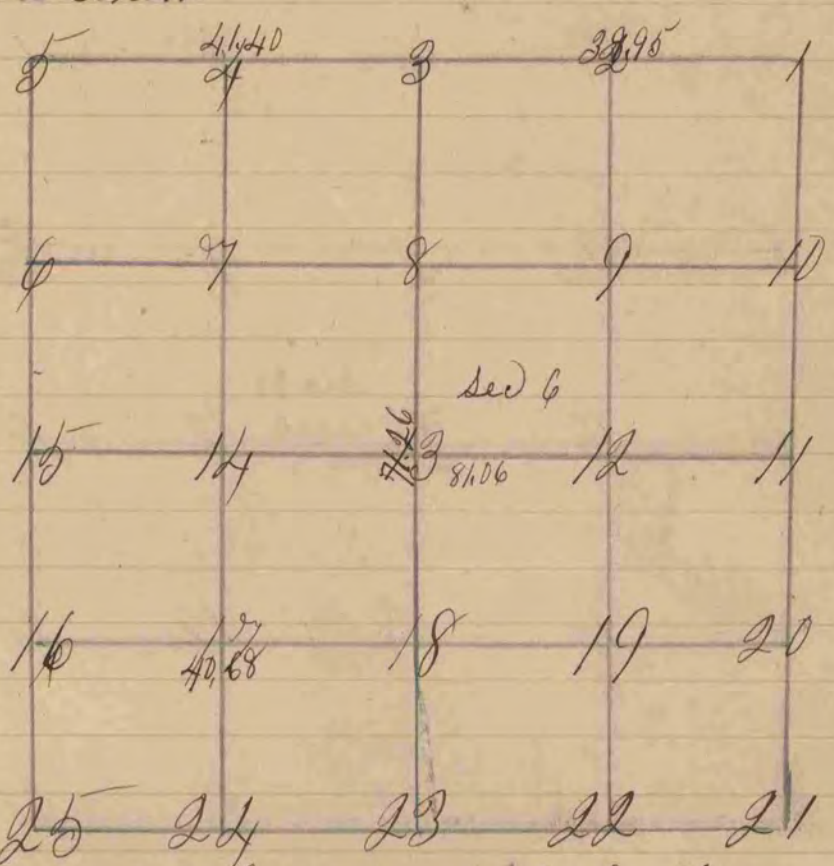


A record of a survey made on section six in the Town of Avon
for Henry W Dickson



figuer 13 represents the centre of the section
 fig 13 zel 0 8 N 46 1/2 W 31 also yellow 0 9 S 2 E 57
 " 18 Br 0 6 S 15 W 146 1/2 also yellow 0 10 N 32 1/2 E 101 1/2
 The above survey was made October 15th 1852
 Peter McLean County Surveyor