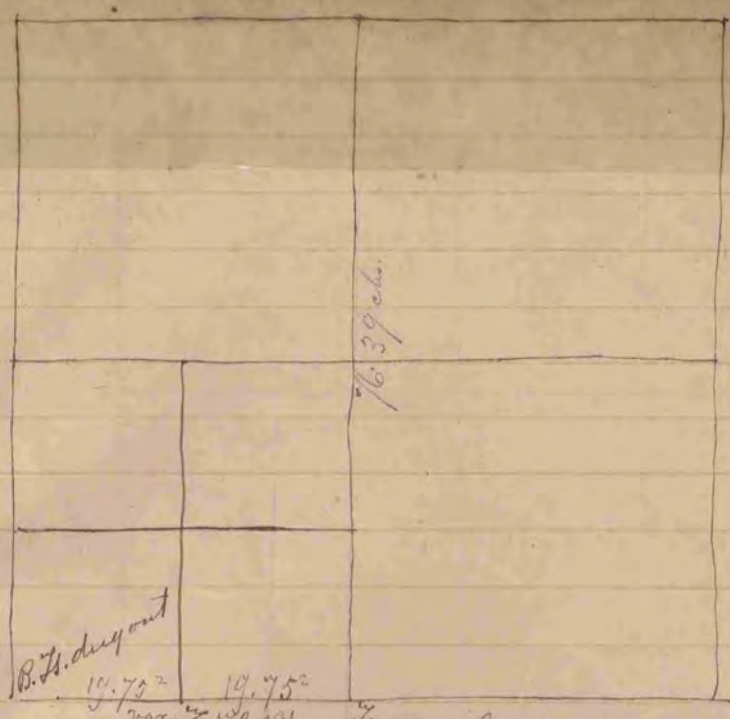


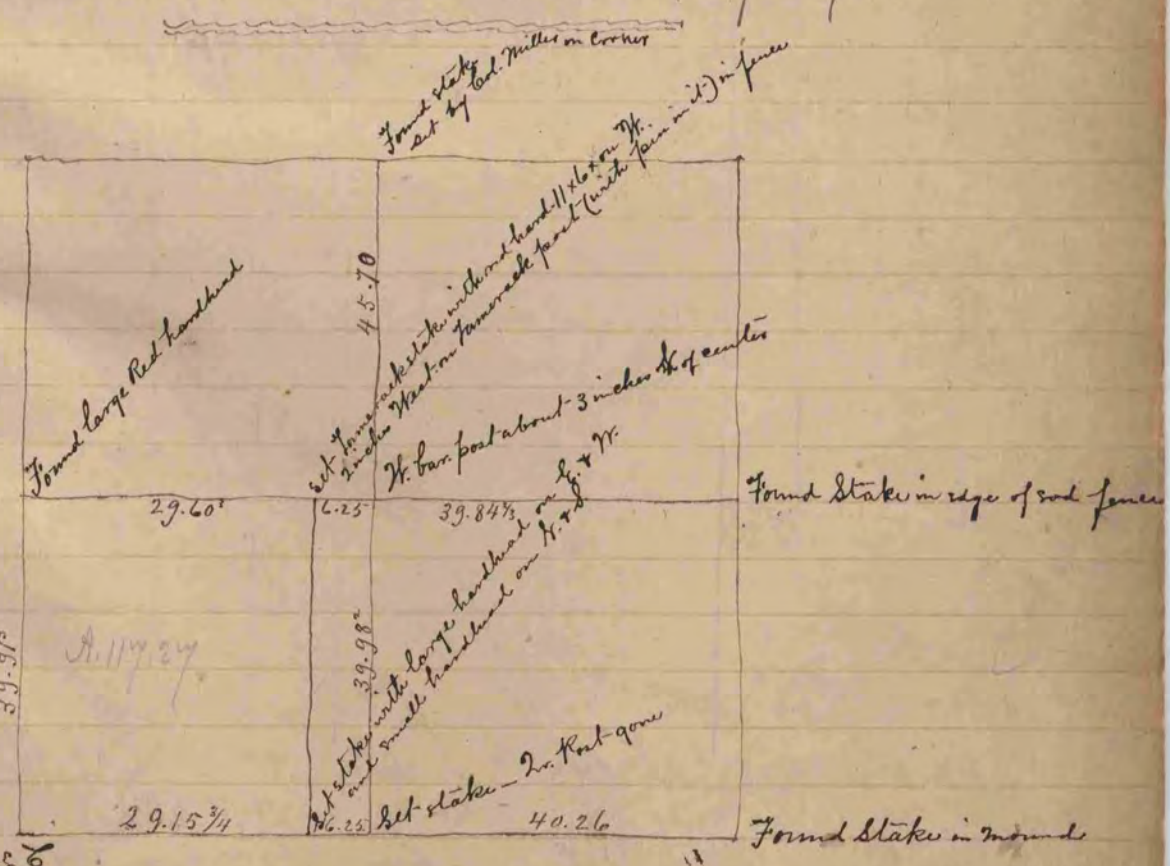
Found remains of old stakes
set round hardwood 13x12x2



COUNTY SURVEYOR
RECORD 1 1851-1869

Found South P. J. and Stump of N. B. J.
Set limestone 1 1/4 x 12 x 2 in mound - pit 3 ft. S.
Surrounded it with 3 limestone in mound - pit 3 ft. S.

A Record Plat of a Survey made by me May 8, 1865, on Sec. 5, Town
of Plymouth - S. D. Locke County Surveyor Rock Co. Wis.



6 corners but from up to top line
sq. including distance and set on
line from each stake with
great handhead 10 x 7 1/2 in
S. and smaller handhead on

A Record Plat of a Survey made by me May 15, 1865 on
Sec. 6 Town of Plymouth Wis.
S. D. Locke County Surveyor Rock Co. Wis.