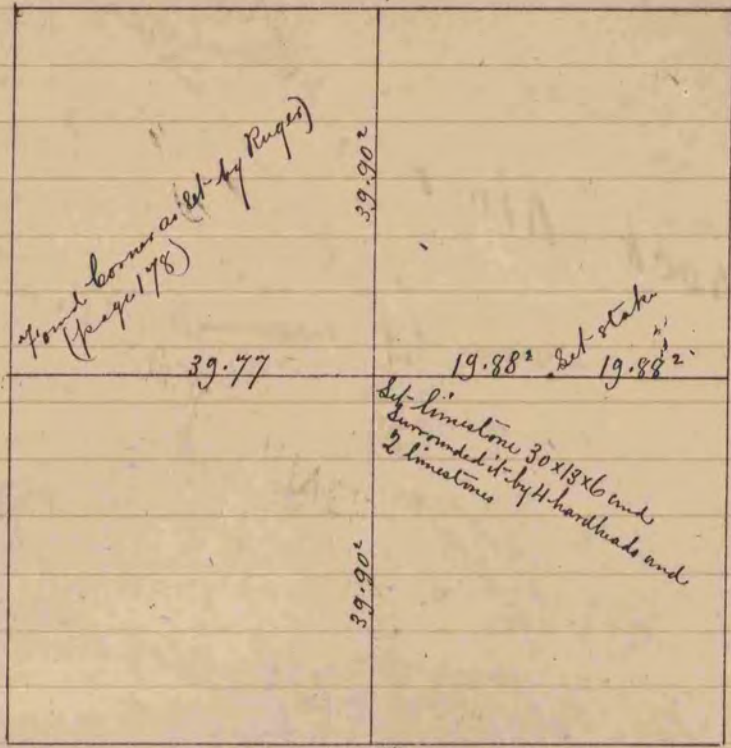


Found corner as set by Raper (page 178)

Found corner as set by Raper (page 182)

224.

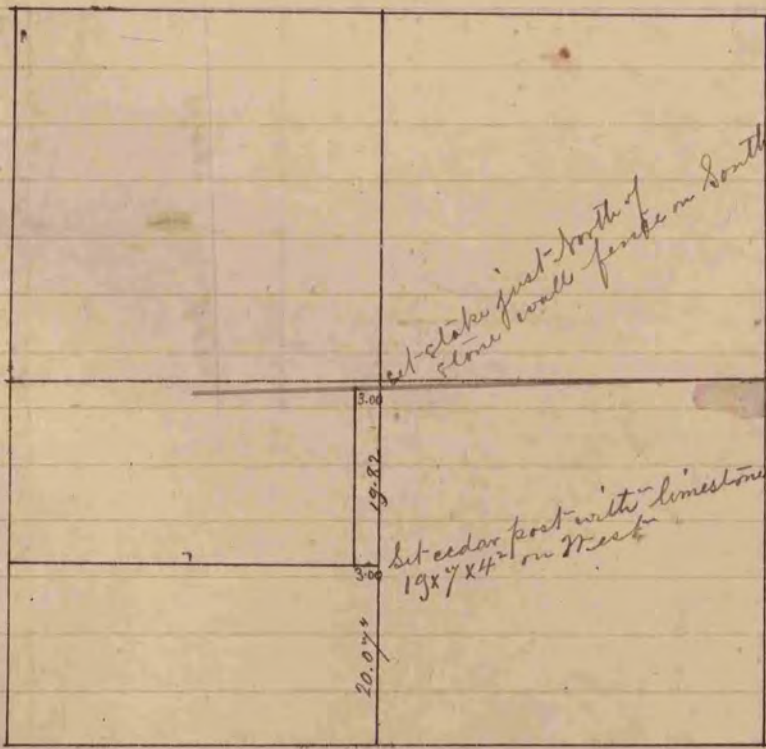


COUNTY SURVEYOR  
RECORD 1 1851-1869

Found old stake in center of E. W. Rod fence and the E. shoulder  
 of N. 7 S. Rod fence. Set stake with red head on N.  
 White head on E., brown head on S. and gray head on W.

The above is a correct Record & Plat of a Survey  
 made by me Oct. 13, 1865, on Sec. 29 in Johnstown

S. D. Locke, County Surveyor



See next page for same