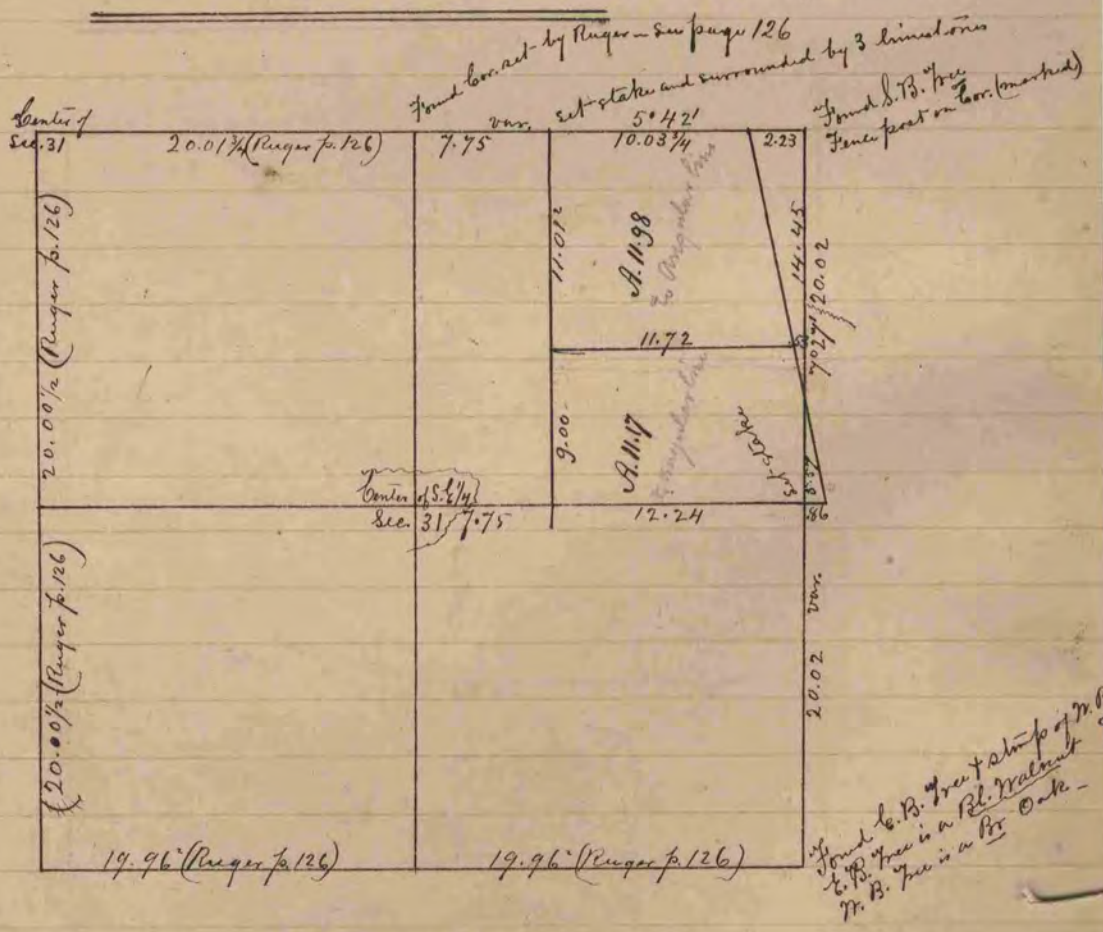


225



The above is a correct record & plat of a survey made by me  
Oct. 27, 1865, on Section 2, Town of Rock.  
S.D. Locke County Surveyor, Rock Co., Mo.



The above is a correct Record & Plat of a survey made by me  
Dec. 6<sup>th</sup>, 1865, on Section 31 Town of Harmony. The Plat represents the  
S. E. 1/4 of the Section.  
S.D. Locke County Surveyor, Rock Co., Mo.