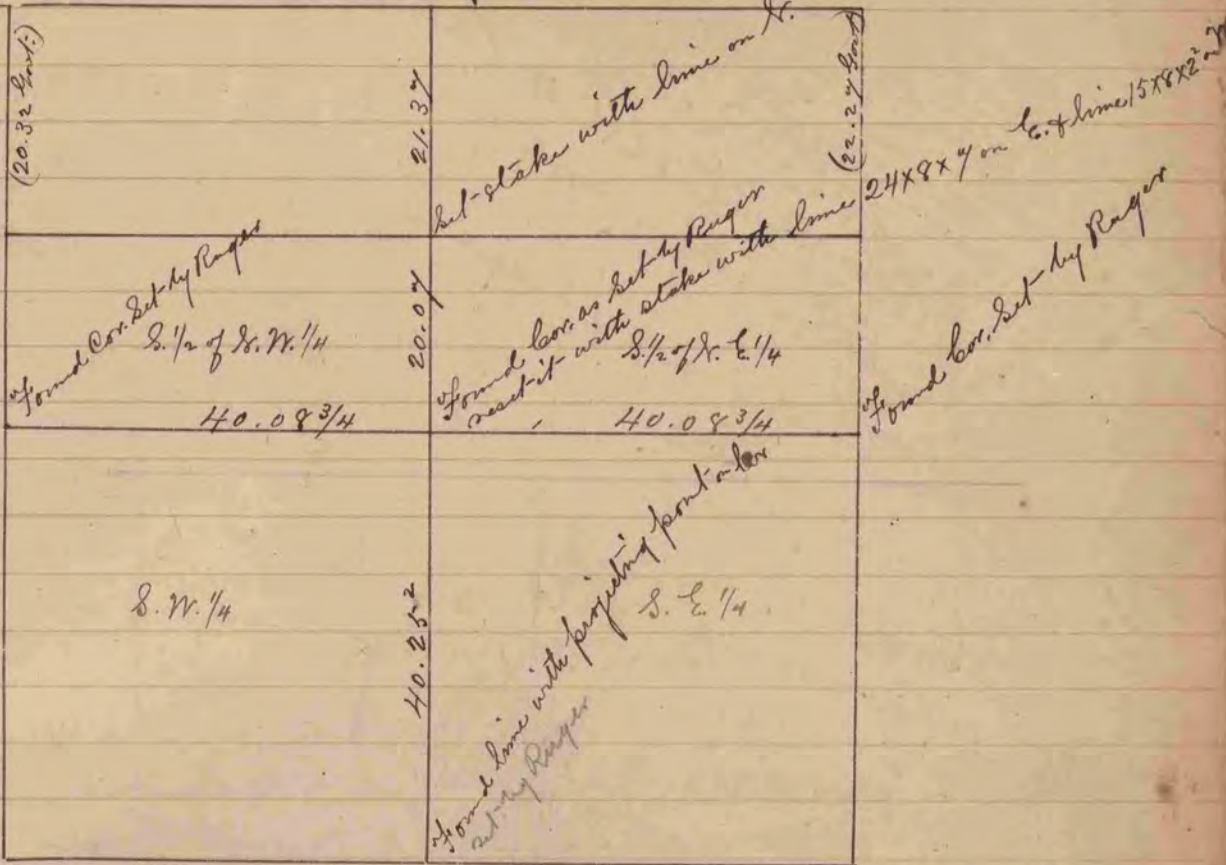


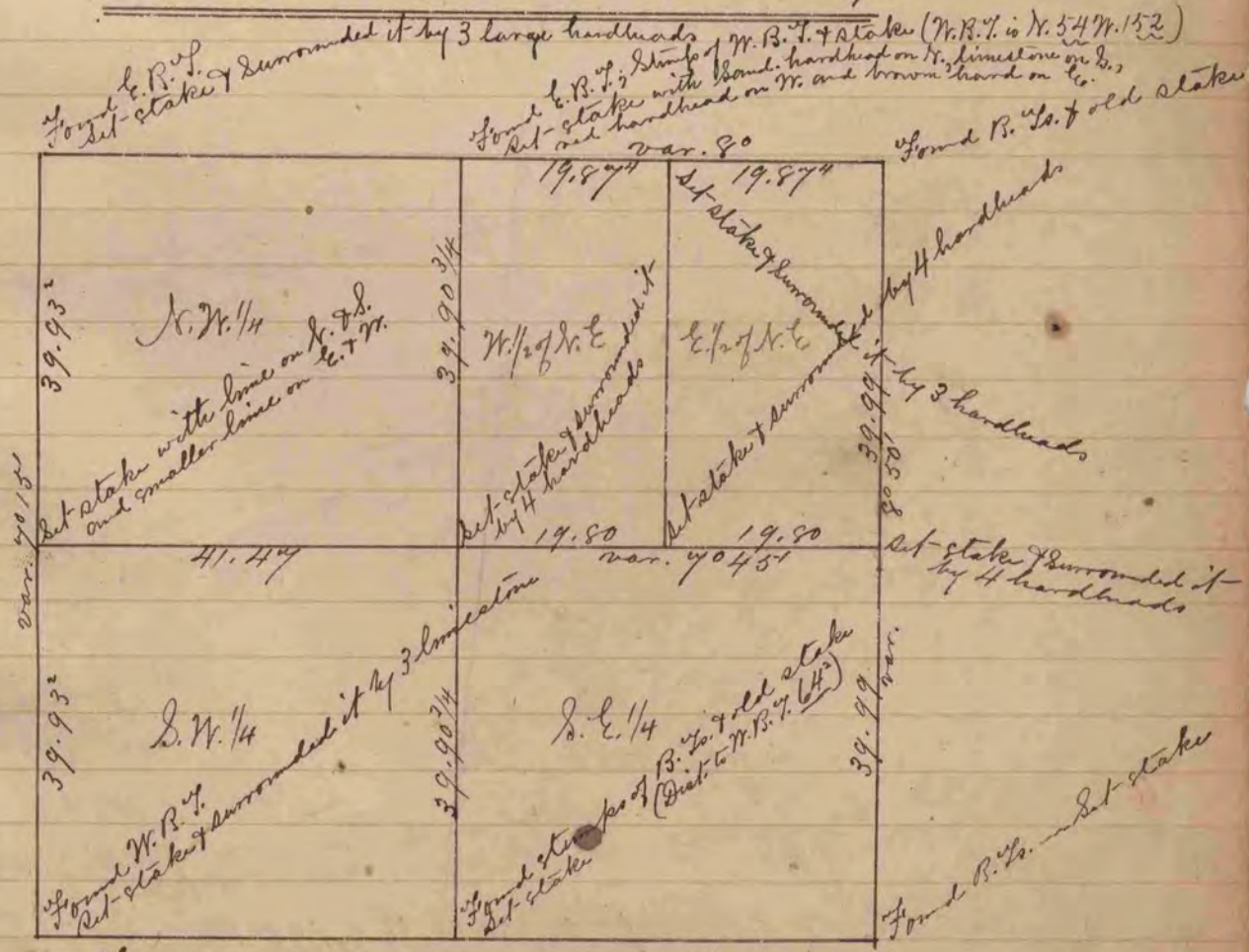
COUNTY SURVEYOR
RECORD 1 1851-1869

Found corner at set by Ranger
Prest stake with handhead on N. of Co. and line on W.

230



The above is a correct Record & Plat of a Survey
made by me May 14 1866, on Sec. 2, Lapranie
S. J. Locke, Co. Surveyor, Rock Co, Wis.



The above is a correct Record & Plat of a Survey made by
me on Dec. 18, Spring Valley, May 16, 1866
S. J. Locke Co. Surveyor, Rock Co, Wis.