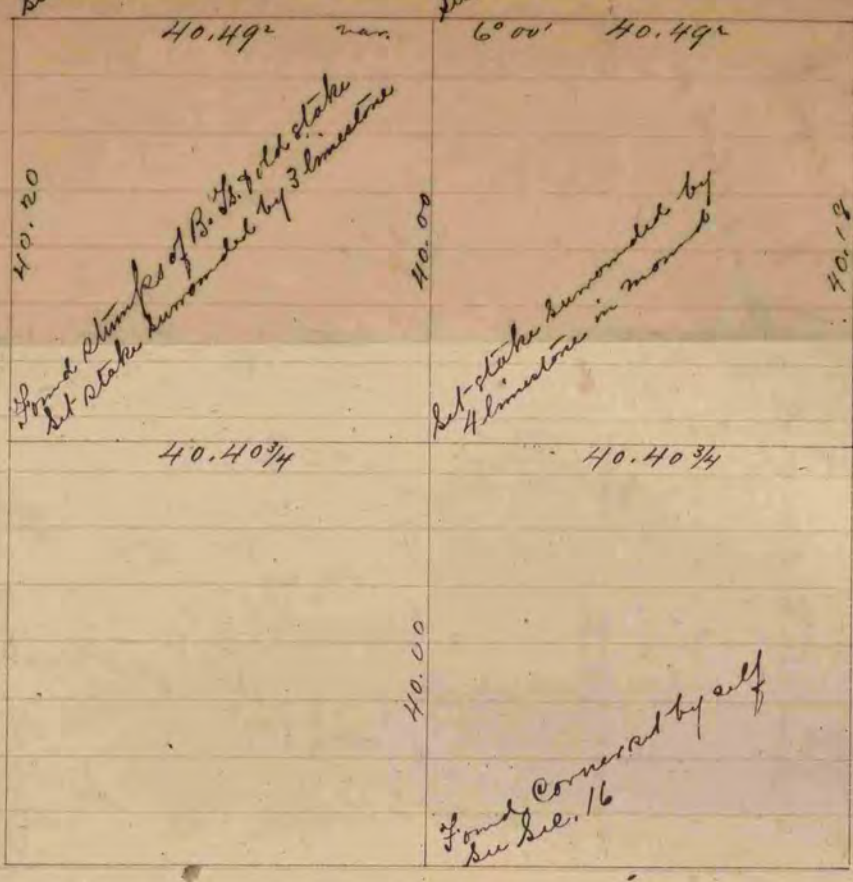


Dec. 4

Dec. 4

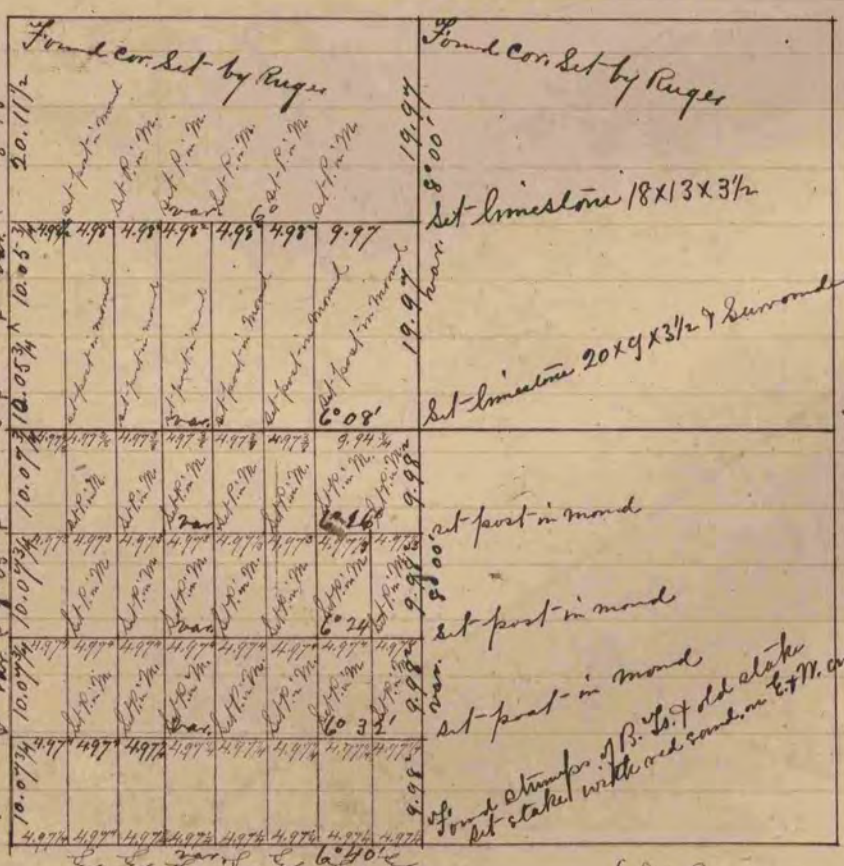
Dec. 4

COUNTY SURVEYOR
RECORD 1 1851-1869



The above is a correct Record & Plat of a Survey made
by me Dec. 28, 1866, on Dec. 9, Town of Plymouth -
S.D. Locke, County Surveyor for Rock Co., Wis.

Found corner set by Ruge
Found corner set by Ruge
Found old post in mound
2nd. West from fence
Found stumps of B. 22.7 old stake
set stake surrounded by 3 limestone
Set stake surrounded by 4 limestone in mound
Found corner set by [unclear] Dec. 10
Found corner set by self Dec. 16



{ set P. in m. means set Post in mound }

The above is a correct Record & Plat of a Survey made by me Jan. 1, 2, 3, 4, 1867,
on Dec. 25, Town of ~~Plymouth~~ S.D. Locke, County Surveyor for Rock Co., Wis.