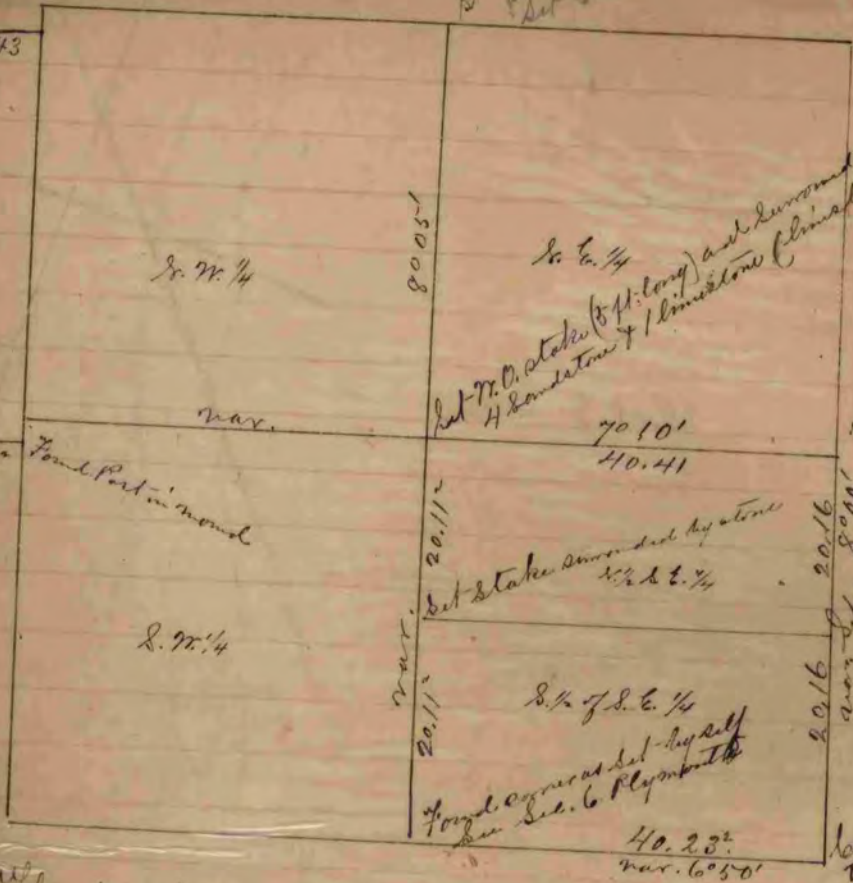


Stake
found old stake
Set small corner

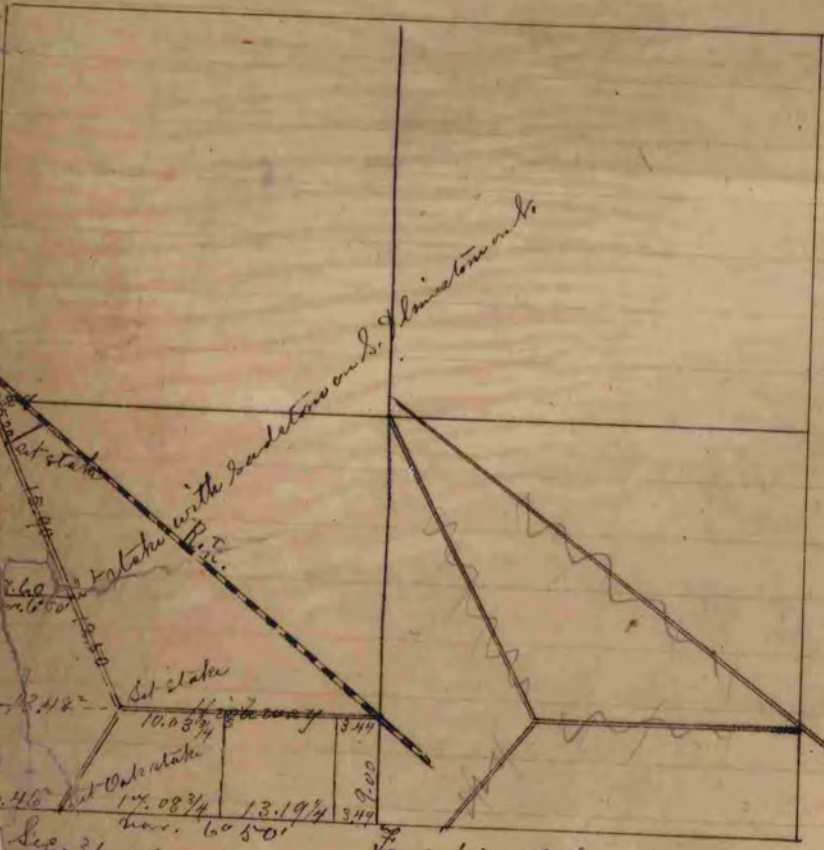
43



Set 70.0 stake (8 ft. long) and surrounded it by 4 sandstone & limestone (limestone on N.)

Set stake surrounded by stone 1/2 x 2 1/2
Set 70.0 stake surrounded by limestone
Set it in midline the line between the 1/4 Post and West. Set drag 10 inches long in center of dam

The above is a correct Record & Plat of a Survey made by me Dec. 30, 1867, on Dec. 31, Center S. D. Locke County Surveyor in for Pocket



Set fine stake set by self
Set oak stake
Set 70.0 stake surrounded by limestone
Set it in midline the line between the 1/4 Post and West. Set drag 10 inches long in center of dam

The above is a correct Record & Plat of a Survey made by me Dec. 30, 1867, on Dec. 32, Center S. D. Locke County Surveyor in and for