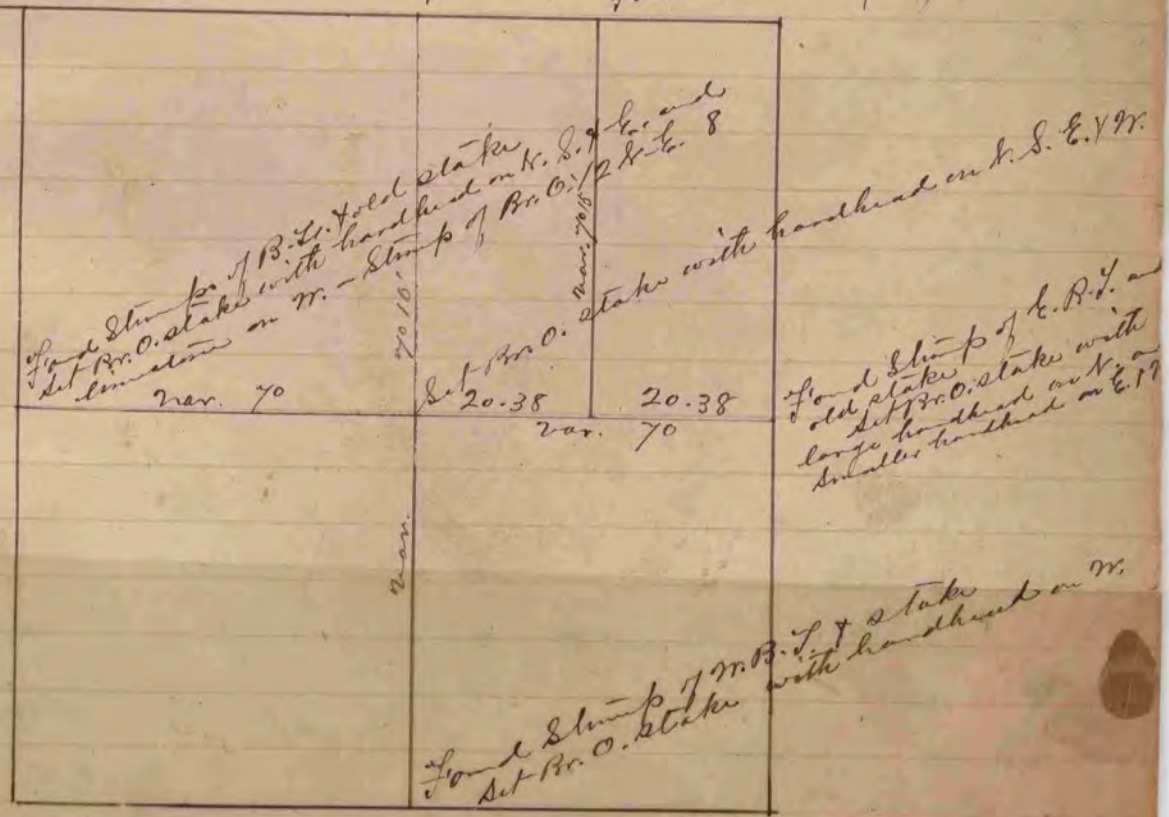


The above is a correct Record & Plat of a Survey made by me April 22 & 23, 1868, on Sec. 9 Plymouth S.D. Locke, County Surveyor

Found cor. as set by self in Dec. 8  
 Found cor. as set by self - in Dec. 8

COUNTY SURVEYOR  
 RECORD 1 1851-1869



The above is a correct Record & Plat of a Survey made by me May 4, 1868, on Sec. 19, Rock