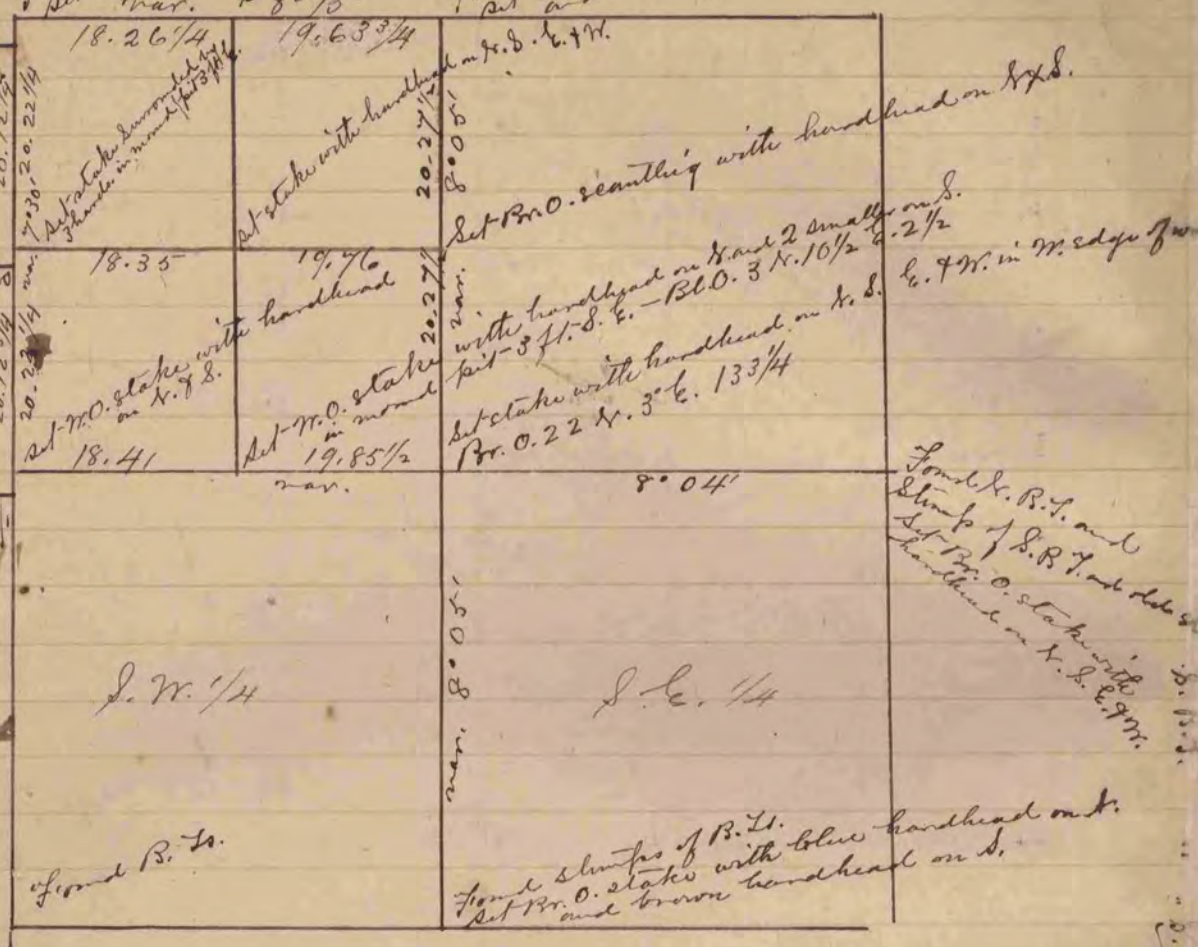
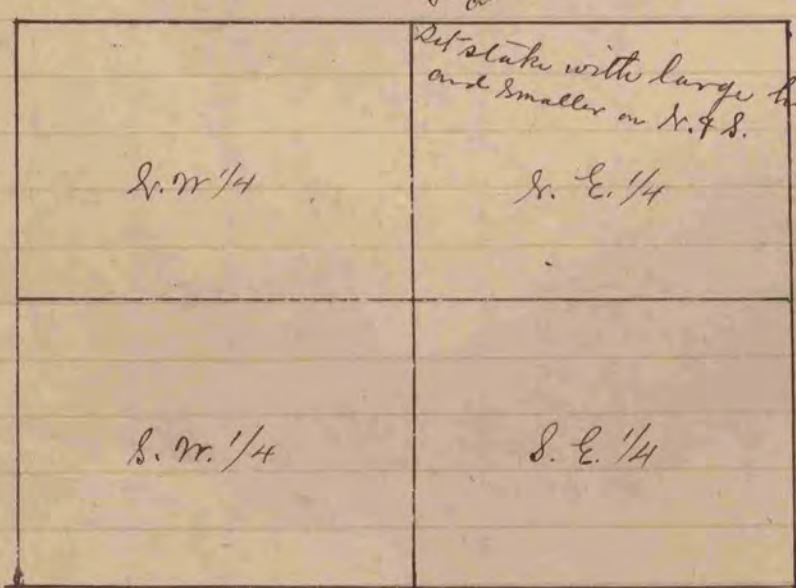


271

Found B. T. and stakes with large hand on S. and smaller hand on N. E. T. W.



The above is a correct Record & Plat of a Survey made by me July 8, 1868, on Dec. 19, 1868.
 S. D. Locke County Surveyor



The above is a correct Record & Plat of a Survey made by me Sept. 20, 1866, on Dec. 27, 1866.
 Union
 S. D. Locke County Surveyor

COUNTY SURVEYOR
 RECORD 1 1851-1869