

A Record and Plat of a Survey made on Sec. 21  
Town 3. Range 12 for Brace, Terwiliger Hall,  
Battegate, Little, Welch & Norton. (Janesville)

Distance given in chains } Surveyed March 21 & 22/59  
Variations marked on lines } by Edward Ruge Co. Surveyor  
of Rock County  
Wis.

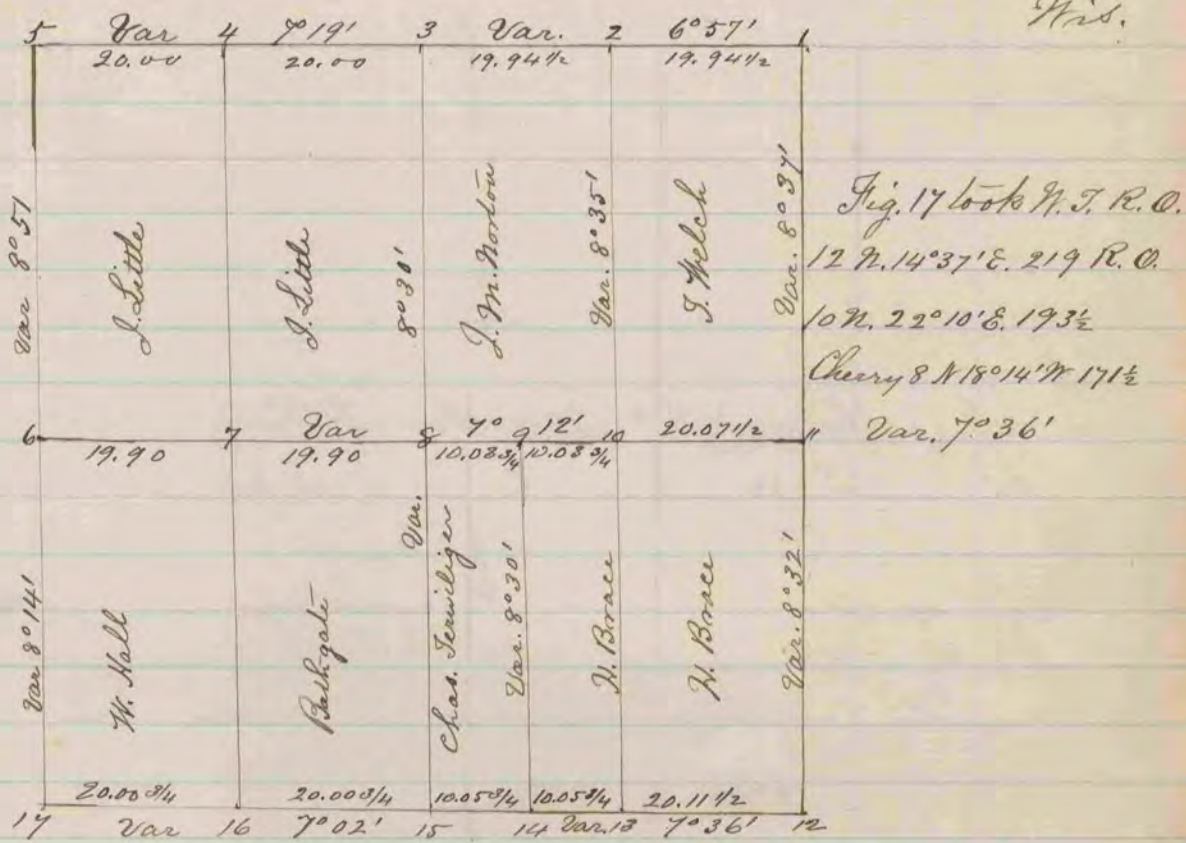


Fig. 17 took N. T. R. O.  
12 N. 14° 37' E. 219 R. O.  
10 N. 22° 10' E. 193 1/2  
Cherry 8 N. 18° 14' W. 171 1/2

Trees

- 1. At Fig. 1 old witness trees standing, Black Oak 12 S 31° W. 15 W. Oak 12 N. 30° W 154
- " " 2 took N. T. White Oak 30 N 65° 25' E 218 Var. 8° 32'
- " " 3 old N. T. standing Burr Oak 10 S 5° E 17 Burr Oak - 340 W 37
- " 4 Look no bearings
- " 5 Old witness trees agreed as to distance but required a variation of 12° 40' to close on bearings
- " 6 Old witness trees standing Red Oak 10 S 43' E 56 Burr Oak 6 N. 10 W 21
- " " Old N. T. being in Highway took new ones
- " " Burr 7 N. 79° 52' W 133 3/4 Burr Oak 5 N. 84° 35' W 137 Var 7° 30'
- " 7 White Oak 14 S 33' E 17 3/4 Var 7° 12'
- " 8 White Oak 14 S 25° 27' E 62 1/2 W. O. 11 S 63° 38' - 78 1/4 W. O. 12 S 66° 35' W 115 Var 8° 35'
- " 9 White Oak 22 S 7° 37' W 55 1/2 White Oak 11 S 44° 30' E 80 1/4 Var 7° 12'
- " 10 Black Oak 13 N. 58° 25' E 13
- " 11 One old N. T. standing White Oak 24 S 43 E other N. T. cut down
- " 12 Old N. T. cut down put in post from stump and took N. T. trees R. O.
- " " 7 S 62' W 117 R. O. 7 N 62° 12' W 130 R. O. 12 N 31° 56' E 202 Var. 7° 45'
- " 13 Locust 5 N. 1° 15' W 54 3/4 Var. 7° 36'
- " 14 Locust 6 N. 14° 25' E 57 1/2 Locust 6 N. 45° 55' E 80 1/4 Var 7° 36'
- " 15 Old N. T. Red Oak 18 N. 11 E 177 took New N. T. Bl. Oak 8 S 24° 15' W 151 1/4
- " 16 Bl. Oak 6 S. 0° 43' E 68 1/4 Var 7° 36'