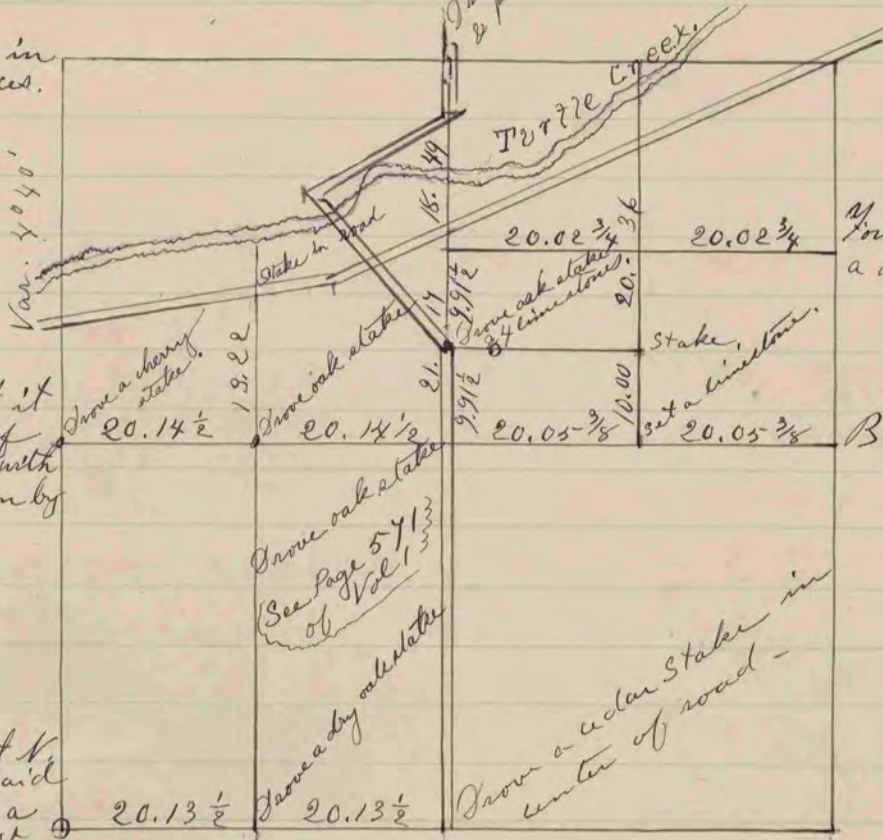


Rec Vol 2
Pg 368

assumed Cor. to be in
line of N. & S. fences.



1/4 Cor. lost. lost it
in intersection of
E & W 1/4 line with
Sec. line as run by
(See page 571
of Vol. 1.)

Found old stake at N
E of fence post said
have been set by a
man from Belmont.

The above is a record & plat of a survey made by me
March 16th & 17th & 18th 1882 on Section 9

Turtle -

R. K. Lee
Deft -

Co - Surveyor -

COUNTY SURVEYOR
RECORD 1859-1906