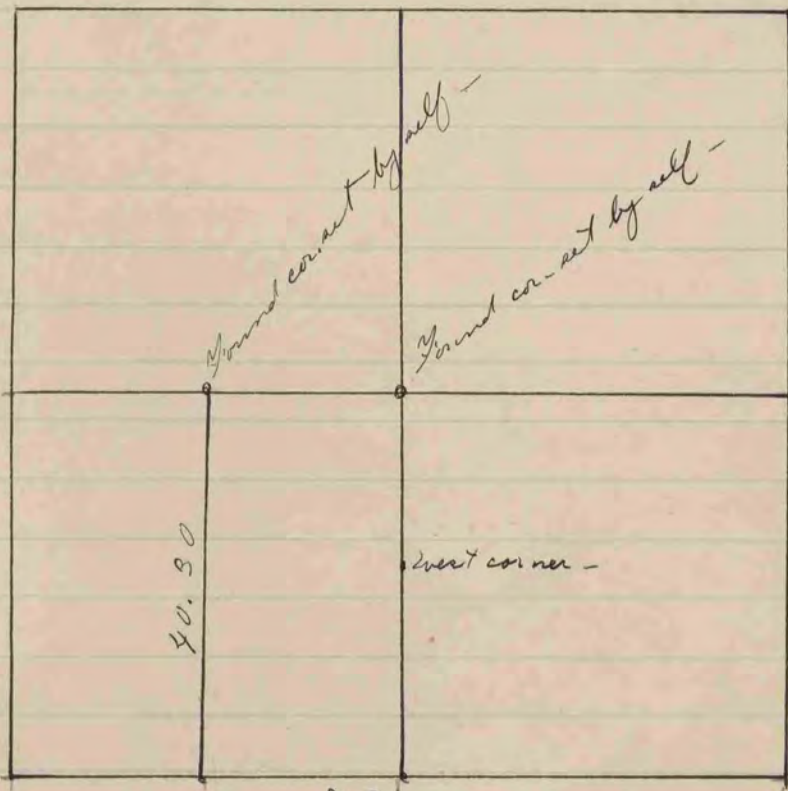


(Reference made to previous
survey should be in Vol 1st
Page 242 but has been
omitted) - See Vol 1
Page 216 of County
Records -

The above is a record & plat of a Survey made by me
on N.E 1/4 of Sec. 27 Union - Nov. 15th 1882 -



Ground cor. set by well
by 4 h. h. Set in top limestone 18x8
to front h. h. stones on N. & S. sides

The above is a record & plat
of a Survey made by me on Sec. 27
Janesville Nov. 6th 1882.