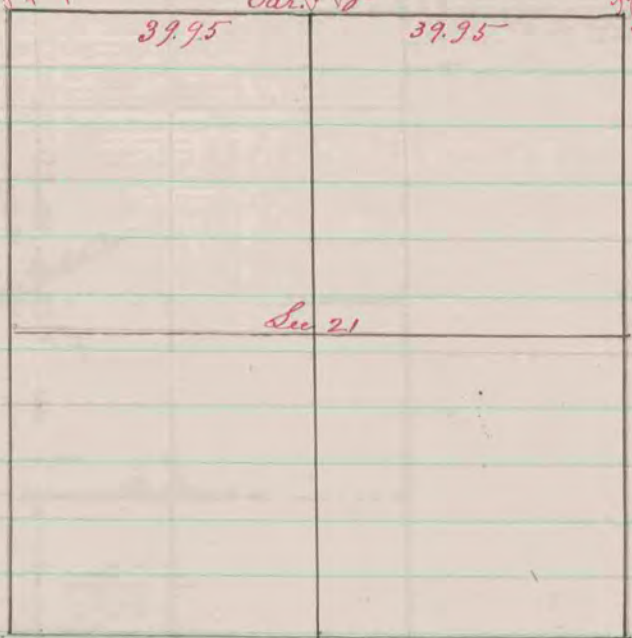
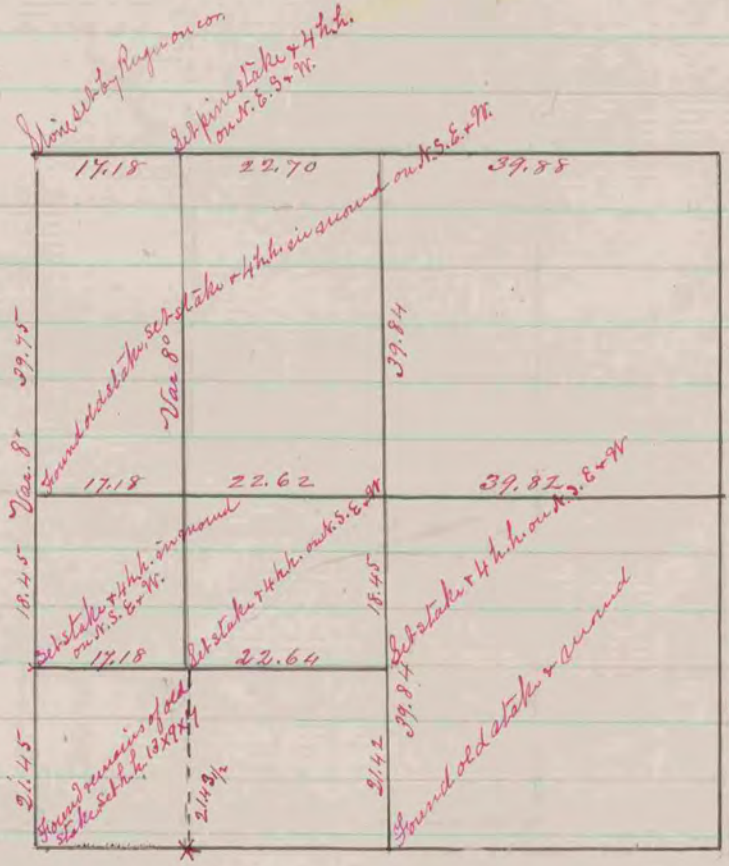


Found stump of B. tree  
 + old stake, 15x11x7  
 Var. Old post lock - Sub large  
 13<sup>1</sup>/<sub>2</sub> irregular hole, 19x18x7  
 Found remains of old stake  
 Sub large irregular hole, 17x12x8



195

Record & Plat of a survey made Nov. 6, 1863 on Secs. 21 & 16  
 T4 N R 11 E by S. L. Locke Co. Surveyor



Record & Plat of a survey made on Sec. 25 T. 3. N. R.  
 14 E. Sept. 1863 by S. L. Locke Co. Surveyor  
 Johnstown

ROYAL COUNTY SURVEYOR  
 COUNTY SURVEYOR  
 RECORD 1859-1906