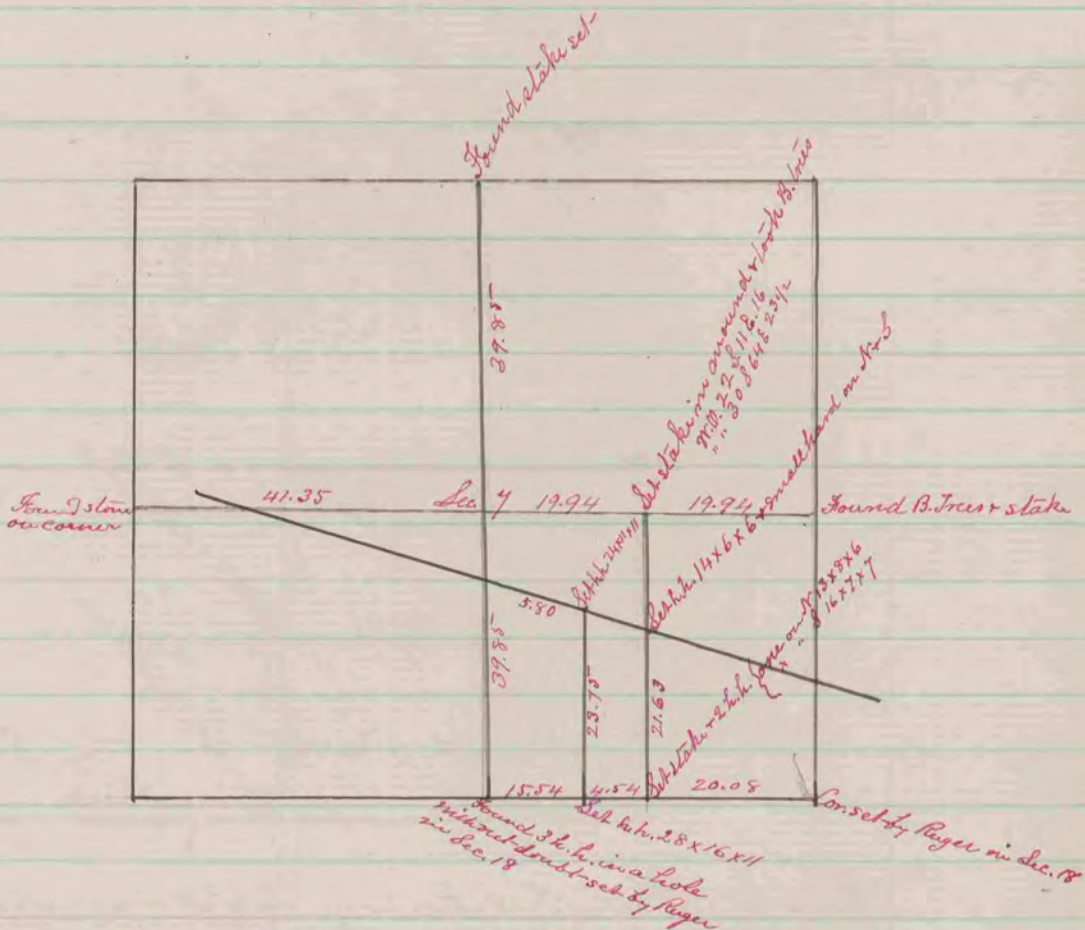




Record & Plat of a survey made on Secs. 17 & 20 T. 3 N. R. 13 E  
 Sept. 1863 by S. D. Locke County Surveyor  
 Harmony



A Record & Plat of a survey made Nov. 17 & 18. 1863 on Sec. 7  
 T. 3 N. R. 10 E by S. D. Locke Co. Surveyor Union

COUNTY SURVEYOR  
 RECORD 1859-1906