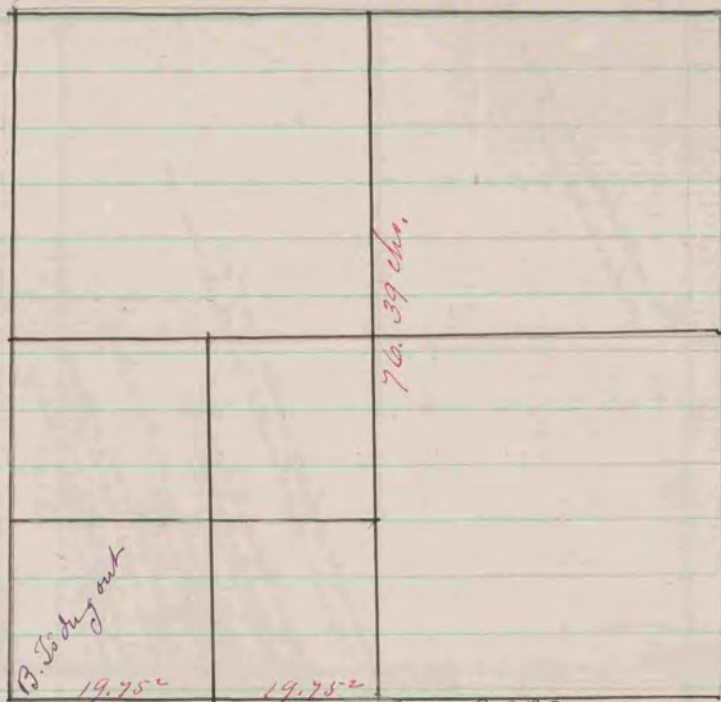


Found repairs  
of old stake, Set  
found h. h. 13x12x12



COUNTY SURVEYOR  
RECORD 1859-1906

B. To dug out

19.75" 19.75" Found S.B.S. & stamp of N.B.T. Set limestone  
 17x12x2 in mound. pit 3 ft. S.  
 Found Stake Set by Church  
 surrounded it with 3 limestone  
 in mound - pit 3 ft. S.

A Record & Plat of a survey made by me May 8, 1865, on  
 Sec. 5 Town of Plymouth S.D. Locke Co. Surveyor

COUNTY SURVEYOR  
RECORD 1859-1906