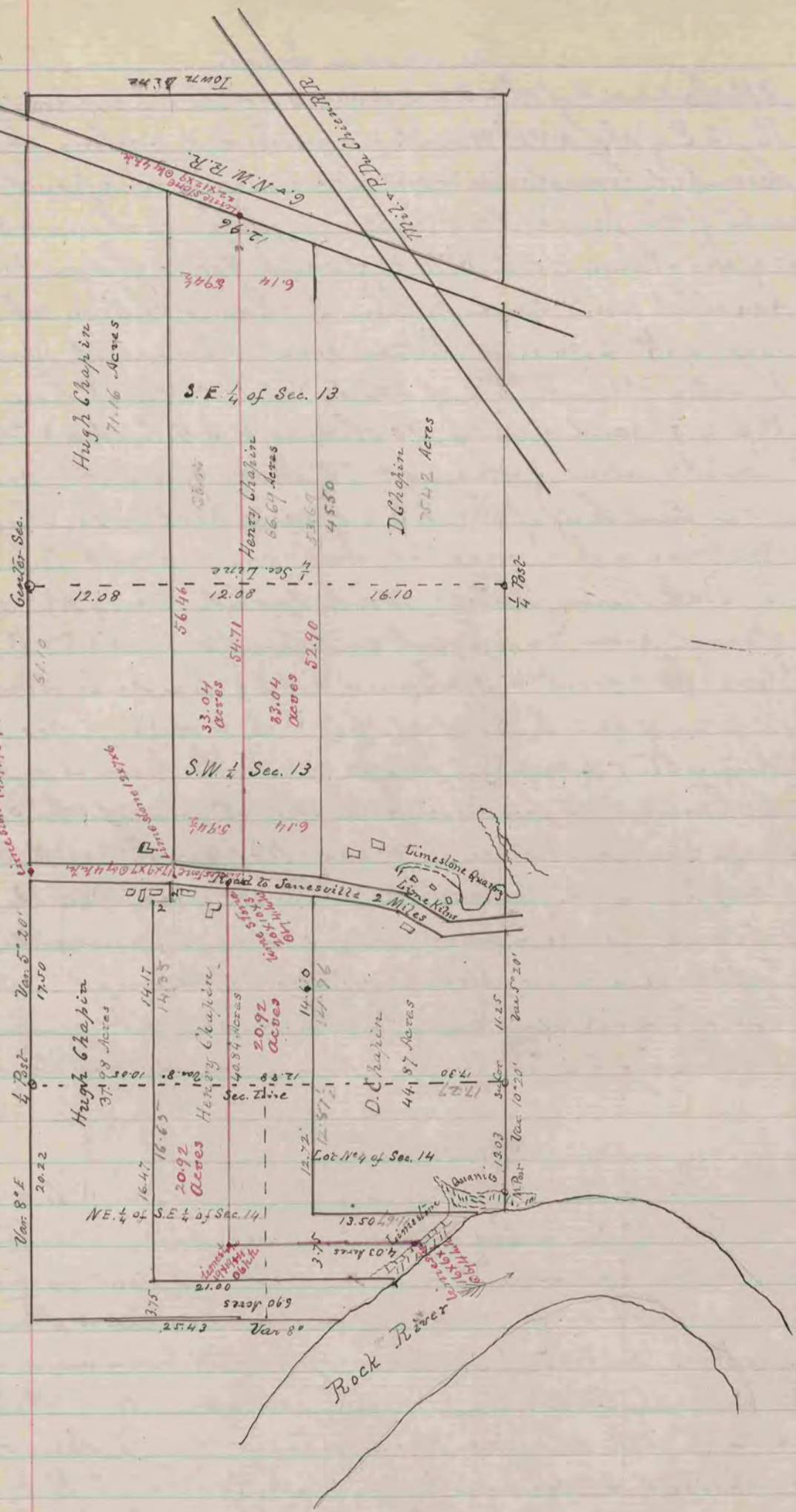


THE Chapin Estate

The S.W. 1/4 Sec. 13, Part of S.E. 1/4 Sec. 13, and N.E. 1/4 of S.E. 1/4 Sec. 14 and LOT 4 Sec. 14

TOWN 3, RANGE 12, E. 4th P.M.



NOT RECORDED
RECORD 1859-1906

COUNTY SURVEYOR
RECORD 1859-1906