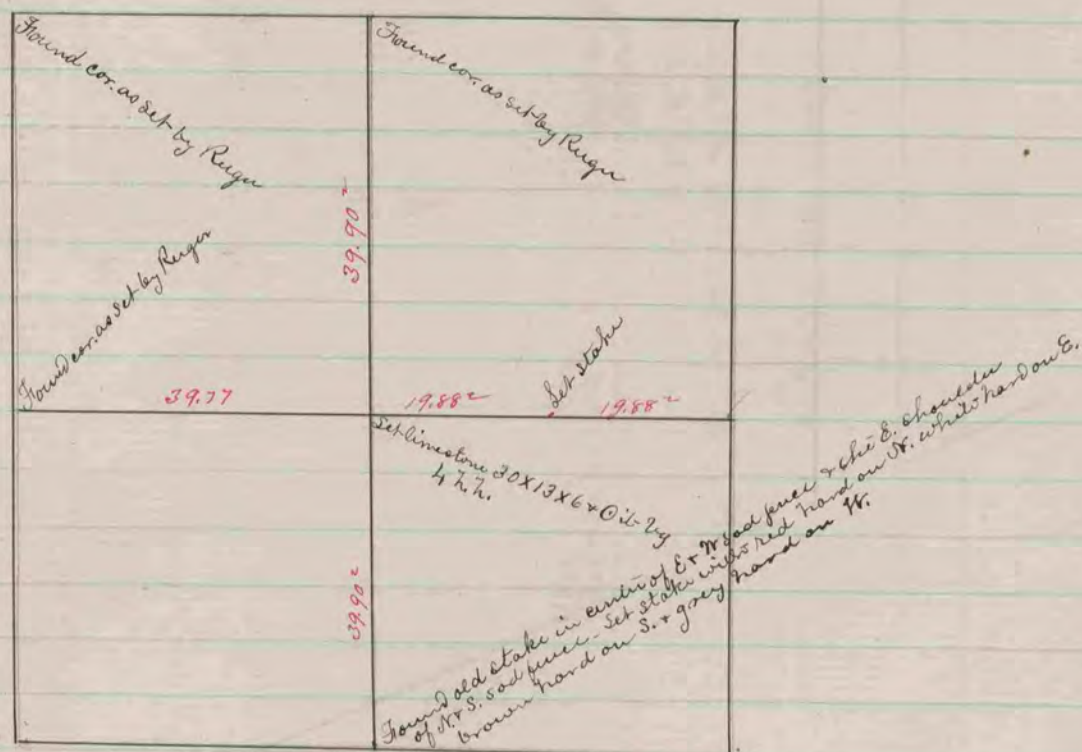


The above is a correct Record & Plat of a survey made by me May 30 & 31 & June 1, 1865 on Sec 28 Town of Bradford  
S. H. Locke Co. Surveyor



The above is a correct Record & Plat of a survey made by me Oct. 13, 1865 on Sec. 29 in Johnstown  
S. H. Locke Co. Surveyor