

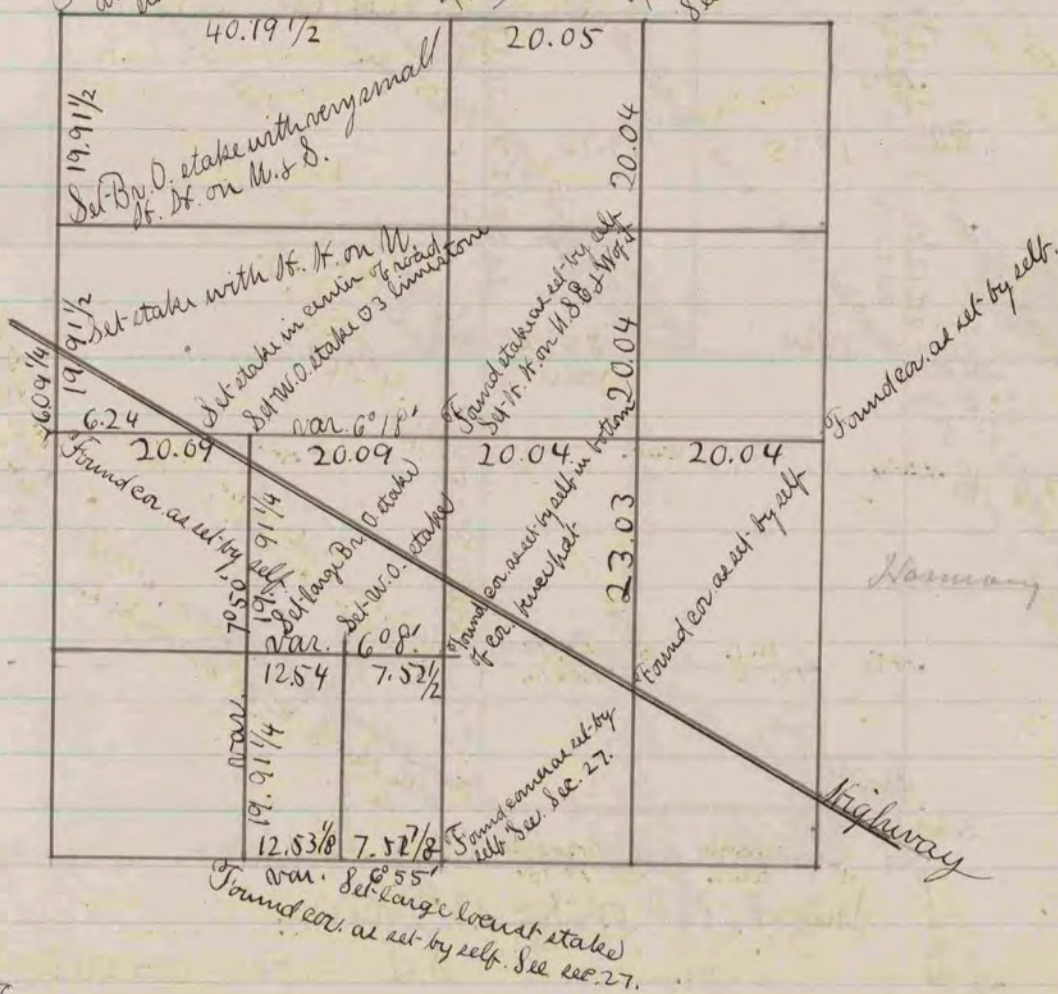


Found old stake and limestone on S.W.
 Found limestone set by Church in exact range of east fence running E. & S.

center 268

The above is a correct record and plat of a survey made by me June 15, 1868. on Sec. 23. center S.L. Locke County Surveyor

Found old stake and another on W. Set large corner stake with H. K. on N.S.E. & W.
 Found corner set by self - See Sec. 15.
 Found cor. as set by self See sec. 15.



Harmony 170

The above is a correct record and plat of a survey made by me June 17, 1868. on Sec. 27. Harmony
 COUNTY SURVEYOR
 RECORD 1859-1906
 S.L. Locke Co. Surveyor