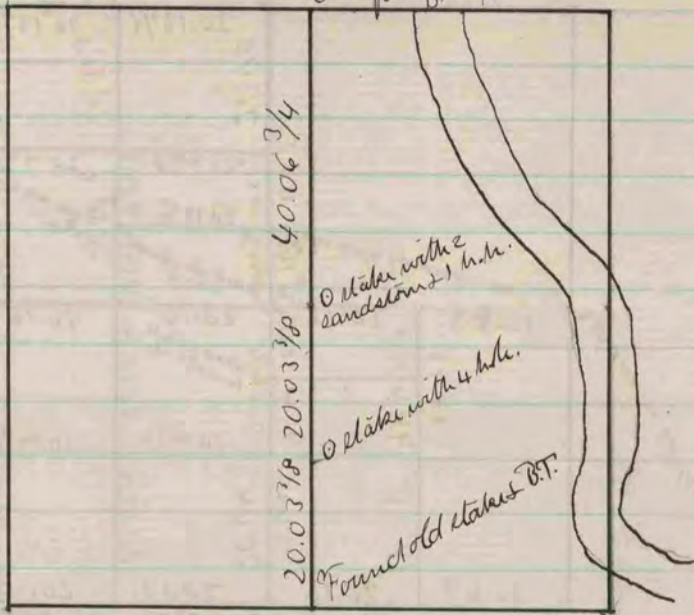
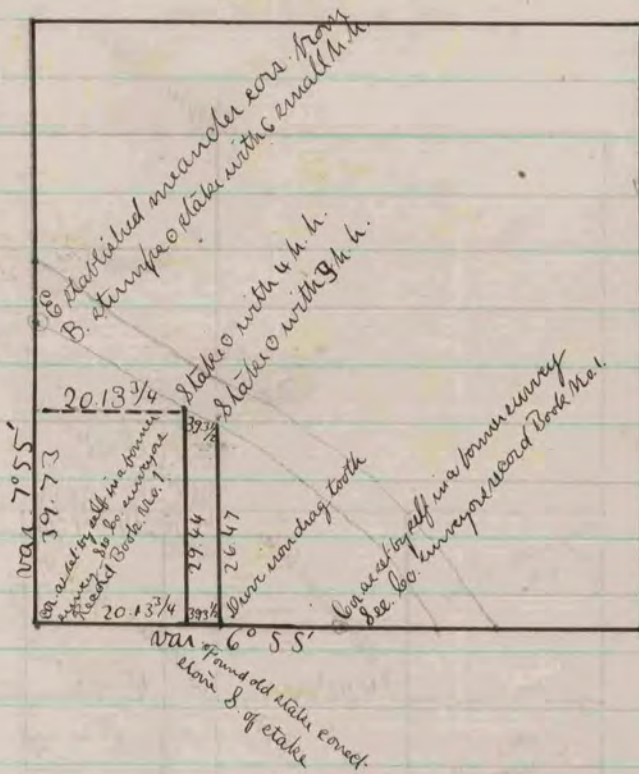


cor. established by self in a previous survey Sec. 15. Jamesville No. 1. Dep. Co. Surveyor



The above is a plot and record of a survey made by me Oct. 15. 1869. on Sec. 15. Jamesville. The survey was made to ascertain the north & south 1/4 line. I ran a true line from the south 1/4 cor. to the north 1/4 cor. using the transit in making the survey.

Edward Ruger  
Dep. Co. Surveyor



The above is a plot and record of a survey made by me Oct. 16. 1869. on Sec. 10. Jamesville  
Edward Ruger  
Dep. Co. Surveyor.

COUNTY SURVEYOR  
RECORD 1859-1906  
RECORD 1859-1906