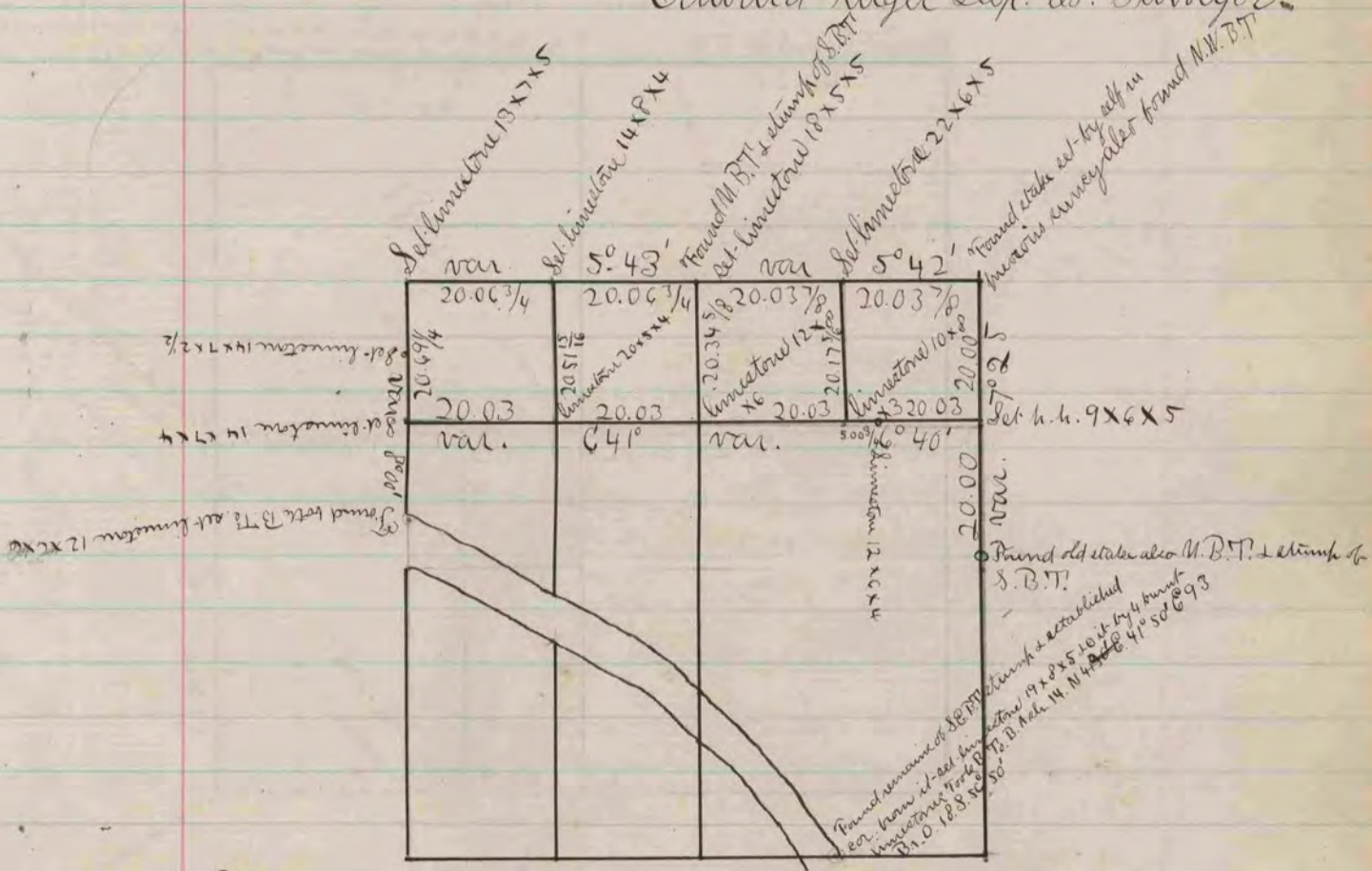


The above is a plat & record of a survey made by me Jan. 6. 1870. on sec. 12. Spring Valley

Edward Rugee Supt. Co. Surveyor.



The above is a record and plat of a survey made by me Jan. 26 + 27. Feb. 12. 1870. on sec. 10. Janesville

Edward Rugee Supt. Co. Surveyor.

The meander cor. on east bank + south side of sec. 10 was established Aug. 2nd 1876. E. Rugee

Co. Surveyor.

COUNTY SURVEYOR 1800
RECORD 1859-1906