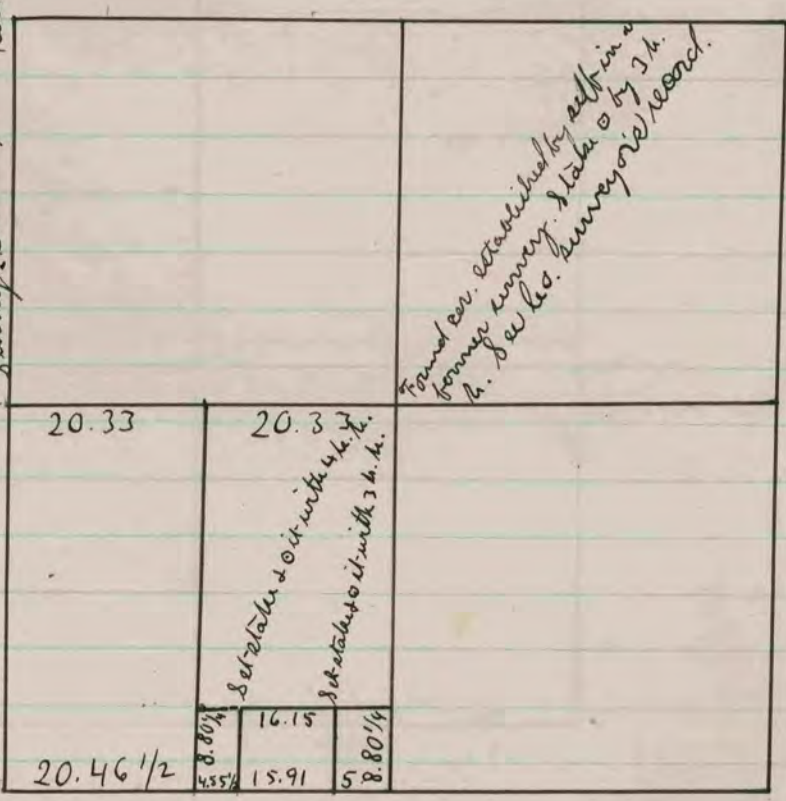


The above is a plat & Record of a Survey made by me,
 Mar. 25 & 27, 1871, on Sec. 27, Lima.
 Edward Puger
 Co. Surveyor.

Found cor. established by self in a former
 survey. Stake @ by 3 h. h. See Sec. Surveyor's
 Record.



For homes on South side of Sec. 22 See plat & record of Sec. 27
 above.
 The above is a plat & record of a survey made by me,
 Mar. 27, 1871, on Sec. 22, Lima.
 Edward Puger
 Co. Surveyor.

COUNTY SURVEYOR
 RECORD 1859-1906