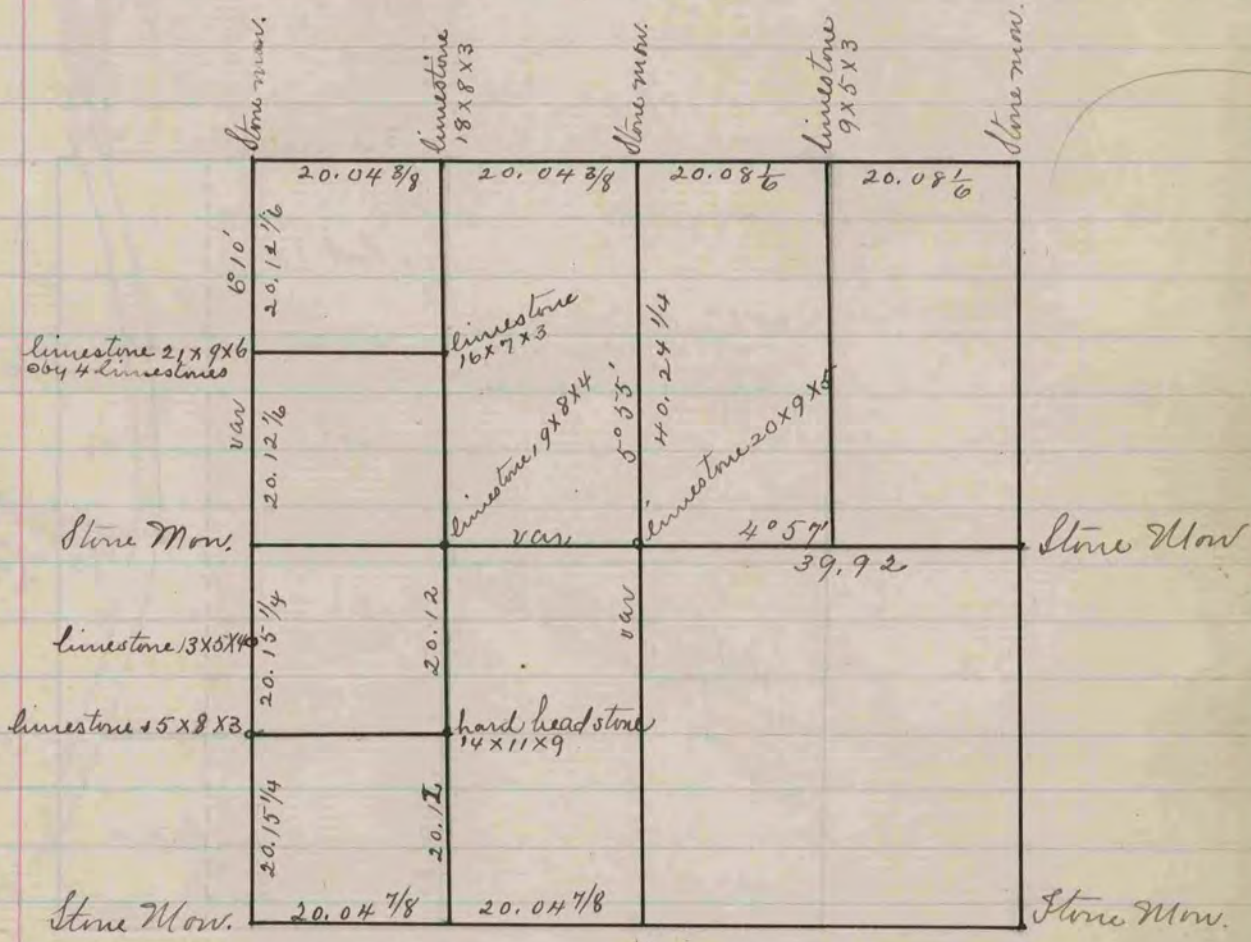


The above is a record & plat of a survey on Sec. 31 Harmony - made April 3 & 4 - 1871 by Edward Ruger County Surveyor.



The above is a record & plat of a survey made on Sec. 10 Plymouth April 14 & 15 - 1871 by Edward Ruger County Surveyor.

COUNTY SURVEYOR
RECORD 1859-1906