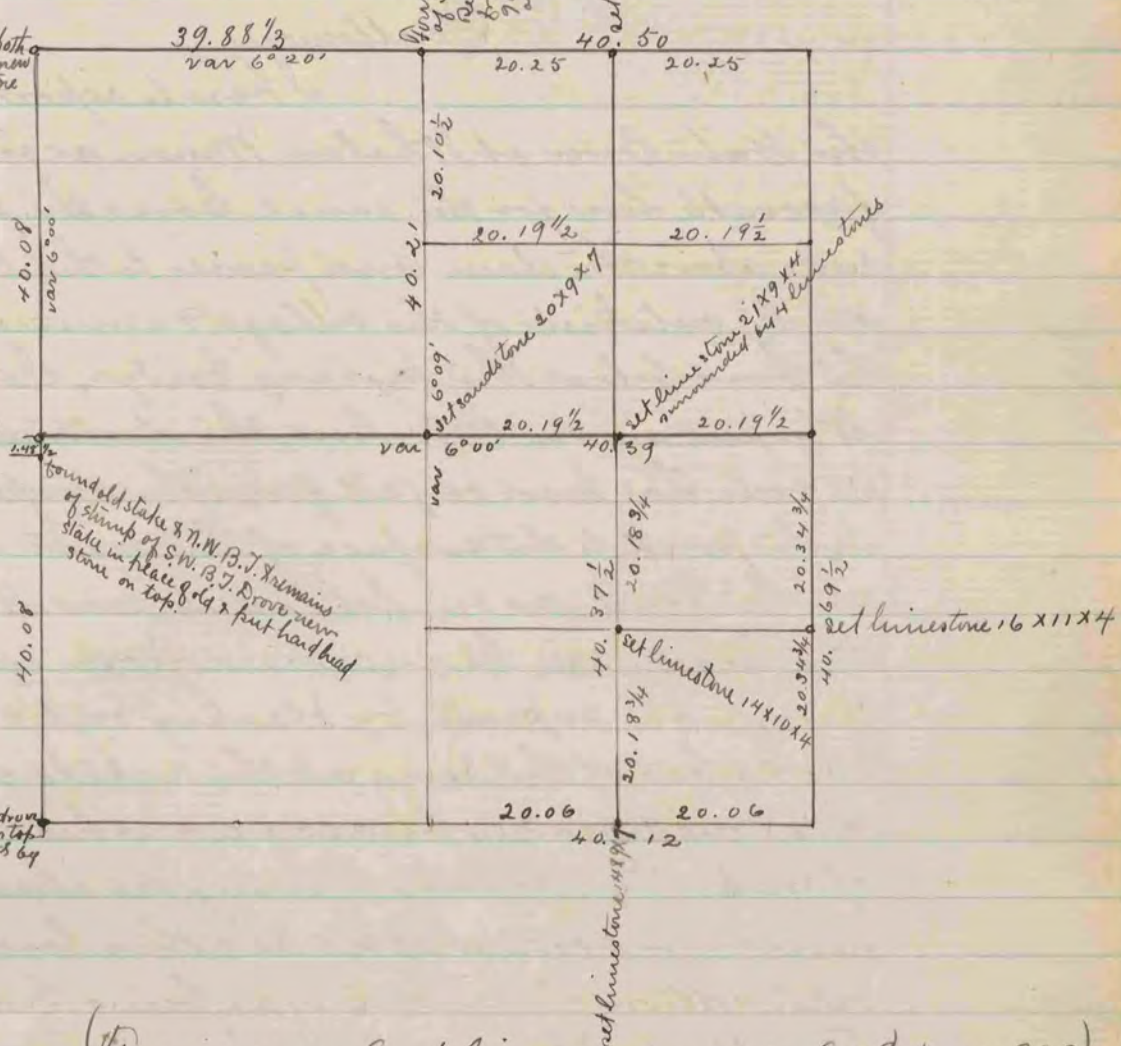


Found old stake & stumps of both
B.T.'s. Drove in place of stake, new
stake, deep, & put on top sandstone
18x9x5 & surrounded by 4
sandstones.

Found old stake & remains
of stump of S.W. B.T. also found
Red oak stump 7 3/8' long
from corner instead of 4' as
7 mm in water. Set in place
old stake limestone 16x9x3

Set limestone 16x9x8



Set hard head stone 16x8x8

Found old stake & N.W. B.T. remains
of stump of S.W. B.T. Drove new
stake in place of old & put hard head
stone on top.

Found remains of old stake, drove
new stake deep in its place & set on top
sandstone 24x12x9 & surrounded by
4 sandstones.

(The corners on East line see survey on Sec 8 page 325)

The above is a record & plat of a survey made by me on
Section 7 - Albany - February 19 - 1884

Edward Rogers
County Surveyor