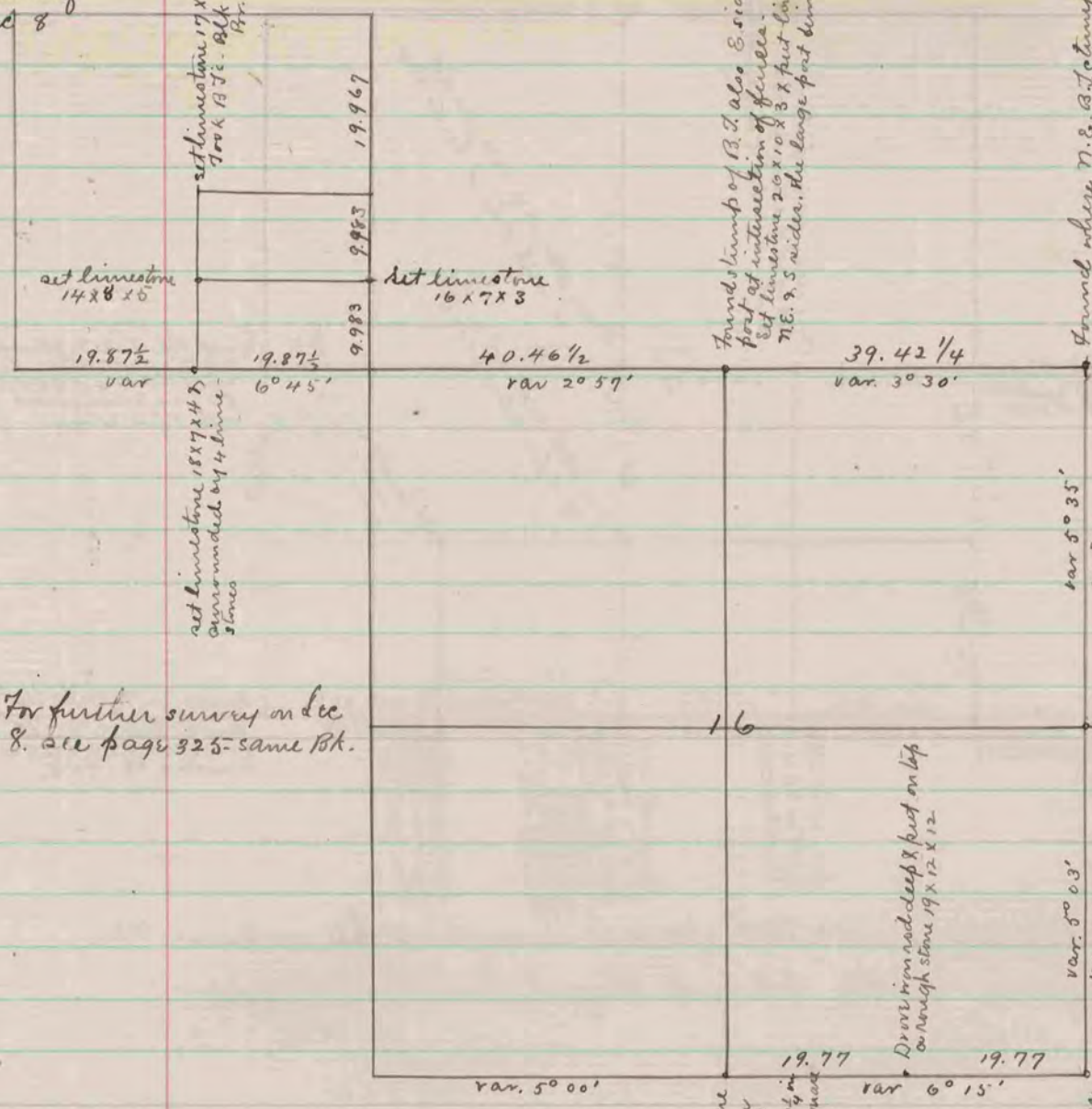


Center of Sec 8



For further survey on Sec 8. see page 325 - same Bk.

(See Bk. 25 - page 10)

Found stump of S.E. B.T. where stump of N.W. B.T. had been dug up. & remains of small stake. Drove round iron rod 1/2 in diameter. sharp at point against head, drove deep X, put on top flint stone 16 x 10 x 6

Found old stake, & remains of N.W. B.T. stump & S.W. B.T. stump & roots of N.E. B.T. Drove in place of old stake, iron rod 1/2 in round - 2 ft in long. sharp point against head & put on top sandstone 16 x 5 1/2 x 3 1/2 at top 7.6 x 8 at bottom, drilled hole in top. Put limestone on N.E. side. Took B.T. Br. O. 16.5. 200 N. 118 1/2

Found remains of old stake & stump of S.E. B.T. but in place of stump of old stake. sandstone 26 x 10 x 7 with hole drilled in top & surrounded it with 4 sand stones.

Found where N.E. B.T. stump had burned an ground also remains of stump of S.W. & N.W. B.T. On East side of fence post at intersection of fence set pointed limestone about 4 in. square on top & cross cut on top 2.2 in long x 1.4 in x 4 at bottom. & put limestone on S.W. & S.E. sides. fence post being on West side.

Found stump of B.T. also E. side of large fence post at intersection of fence. Set limestone 20 x 10 x 3 & put limestone on the N.E. & S. sides. the large post being on West side.

set limestone 17 x 10 x 4 Took B.T. Br. O. 10.5. 84° E 36 Br. O. 6. N. 34° 05' 73

set limestone 14 x 8 x 5

set limestone 16 x 7 x 3

set limestone 18 x 7 x 4 5 surrounded by 4 limestone