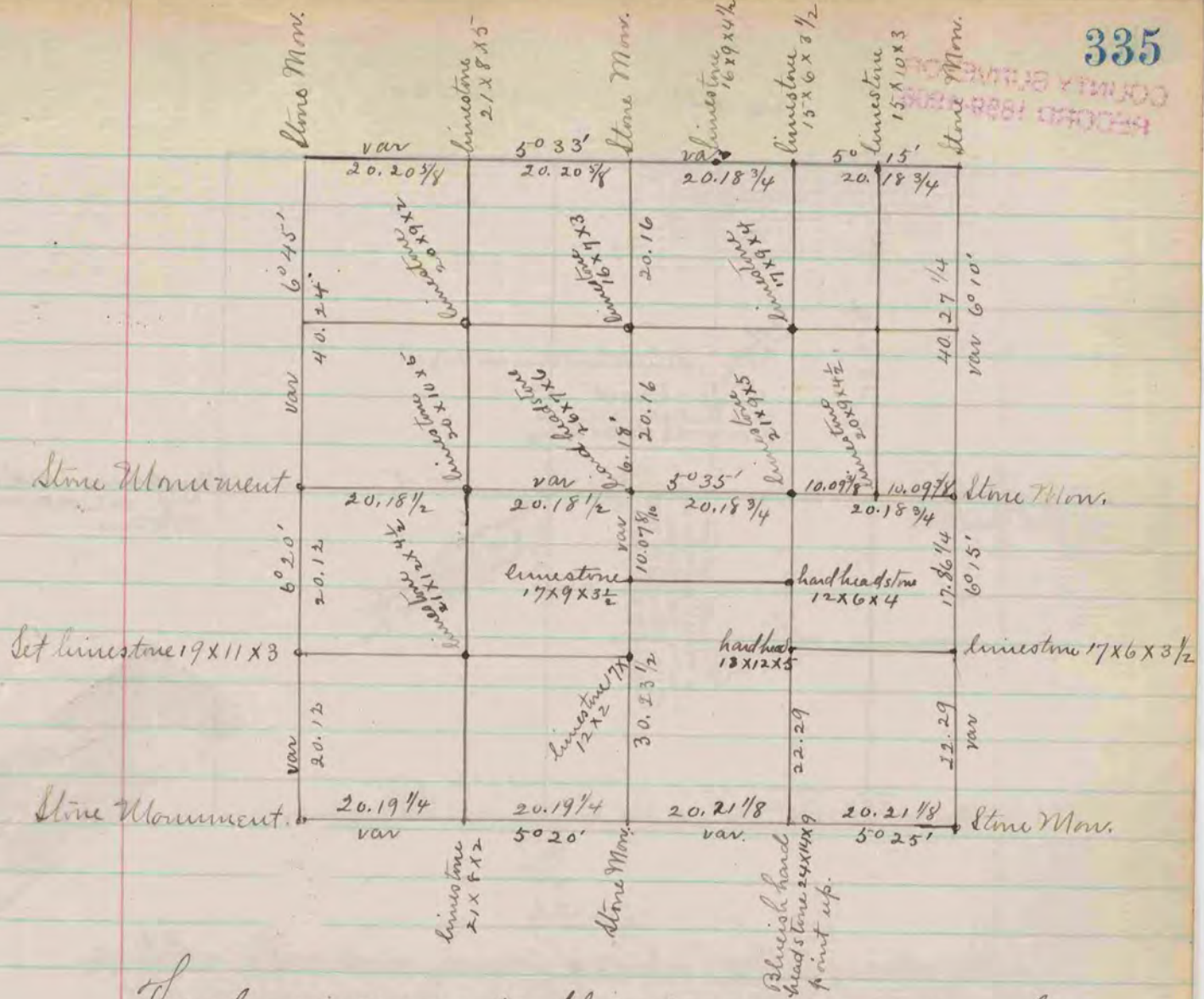


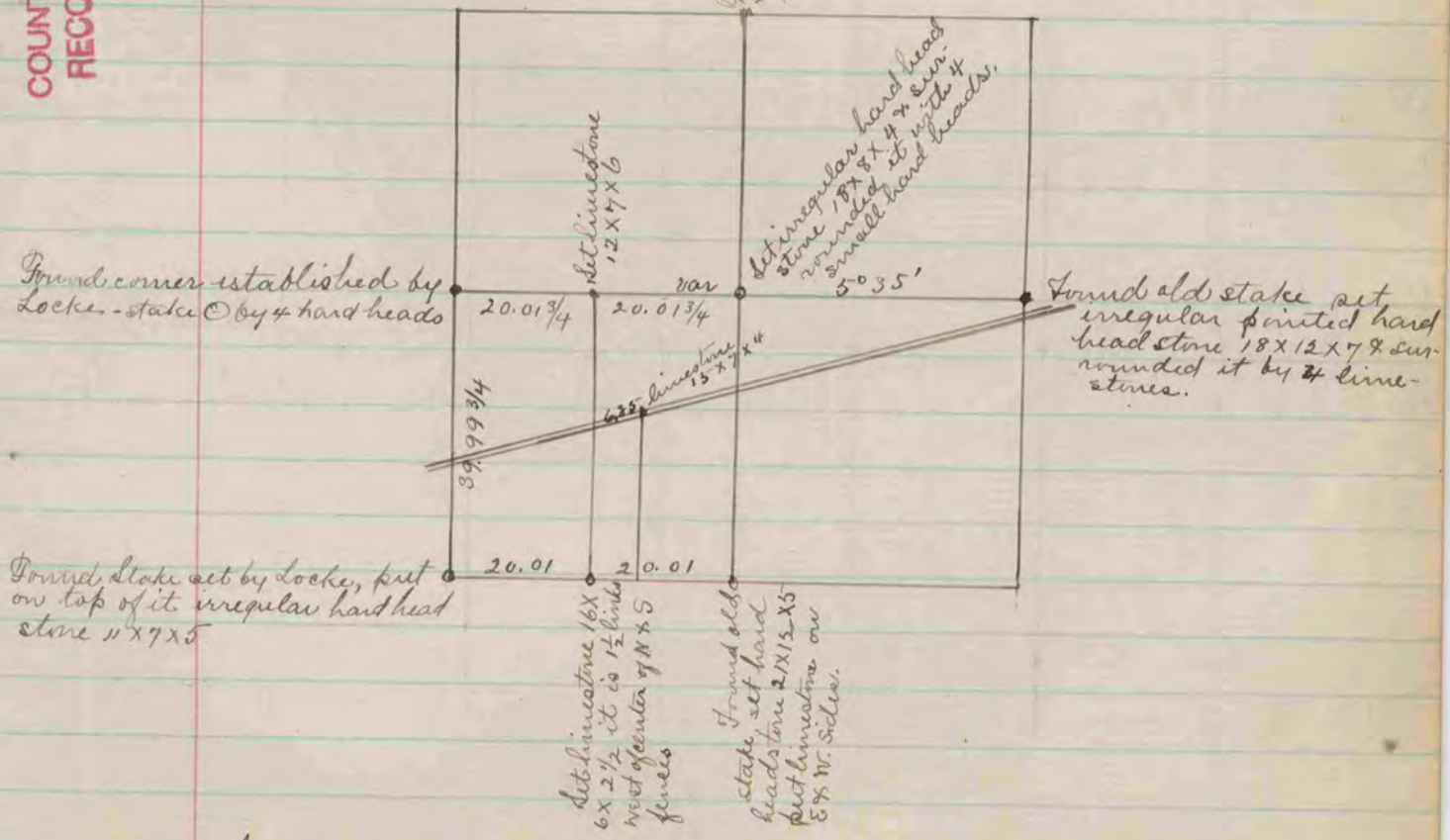
PLYMOUTH COUNTY SURVEYOR
RECORD 1859-1906



The above is a record & plat of a survey made on Sec. 33
Plymouth, Oct 9, 10, & 11-1871 by Edward Ruggs, Co Surveyor.

COUNTY SURVEYOR
RECORD 1859-1906

Found corner established
at 4 will stake sur-
rounded by stones
See Sec 35 Bradford
Book 'A'



The above is a record & plat of a survey in Sec. 2 Clinton
made October 12-1871. by Edward Ruggs
County Surveyor.