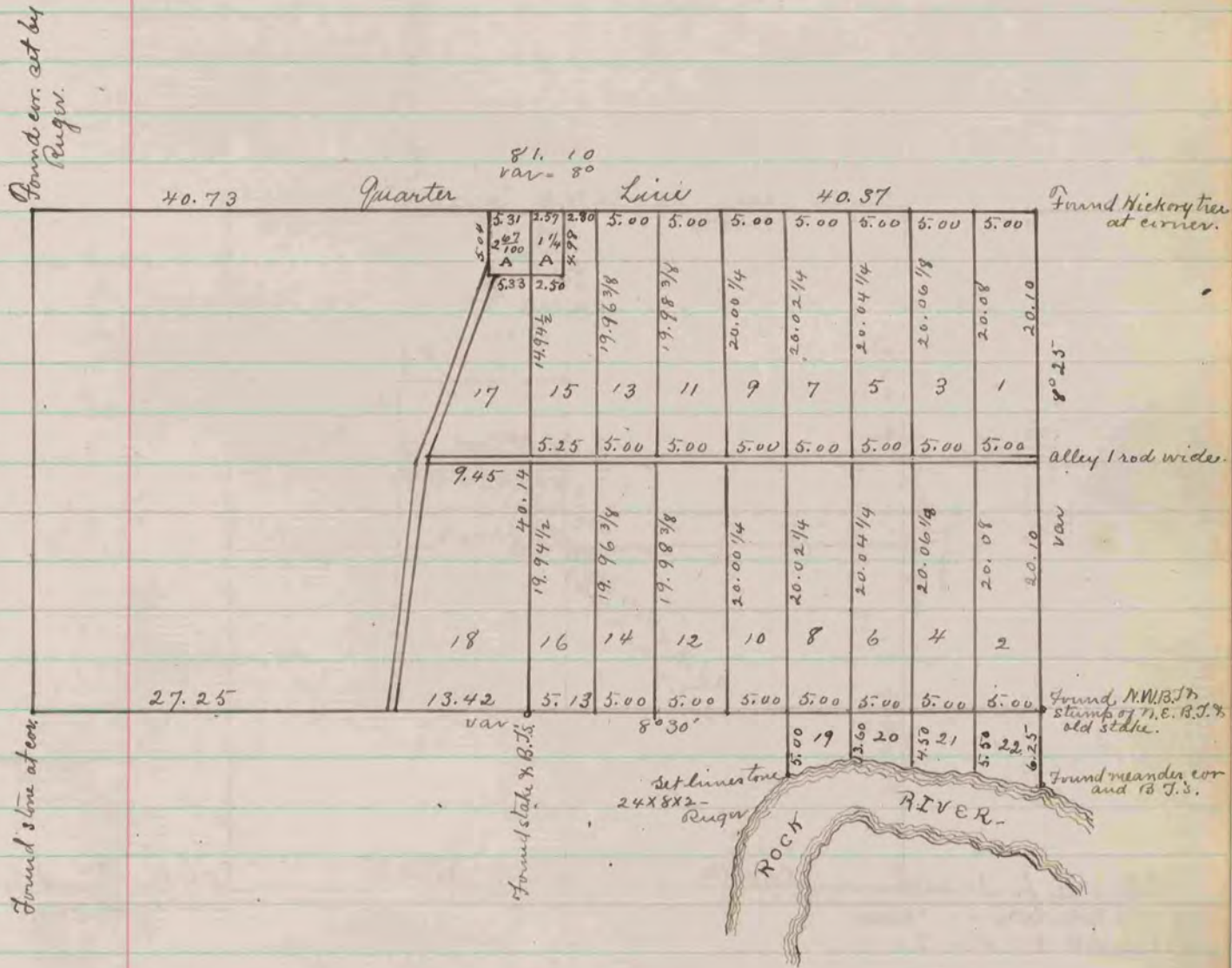


The above is a record of plat of a survey made on Sec. 15, Fulton, Oct. 7 & 8, 1872. by R. K. Lee, Dep. Co. Surveyor.



The above is a record of plat of a survey made on Sec. 9 Fulton, Dec. 16-23, 1872 - by R. K. Lee.

Dep. Co. Surveyor
COUNTY SURVEYOR
RECORD 1859-1906