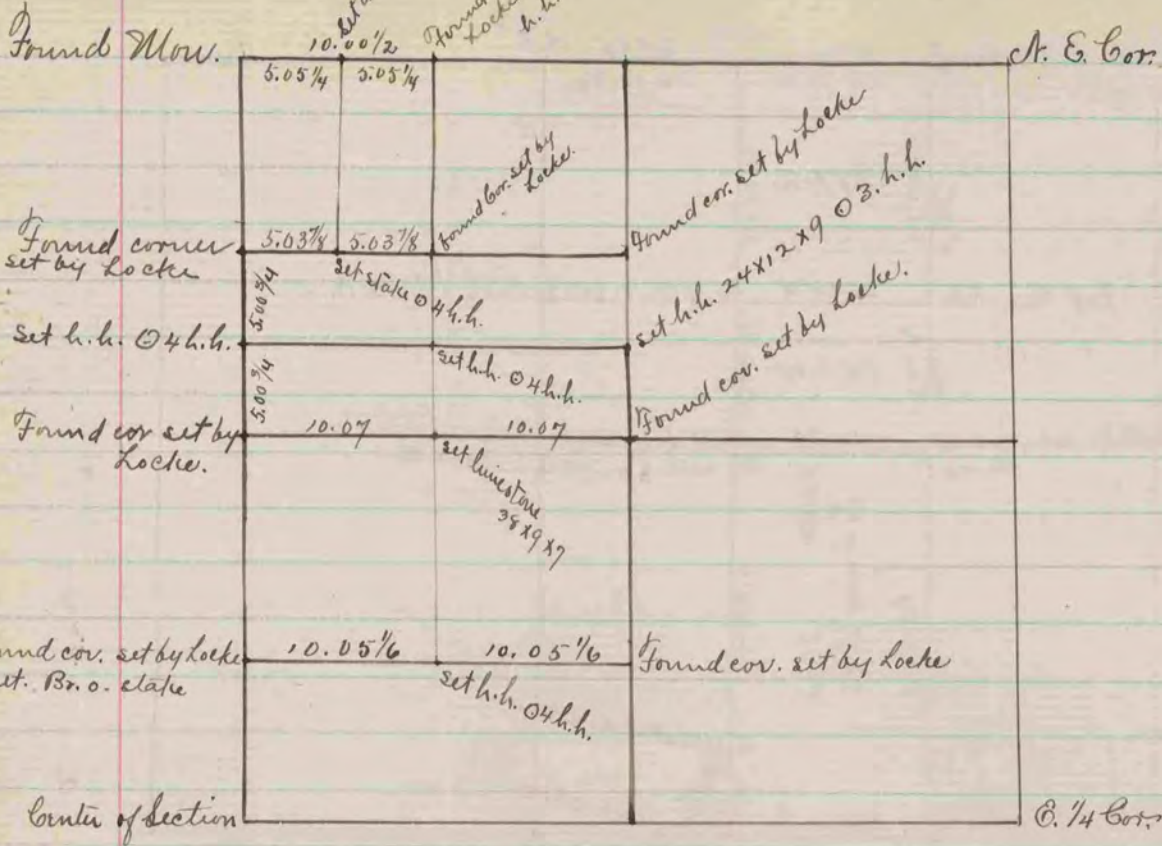
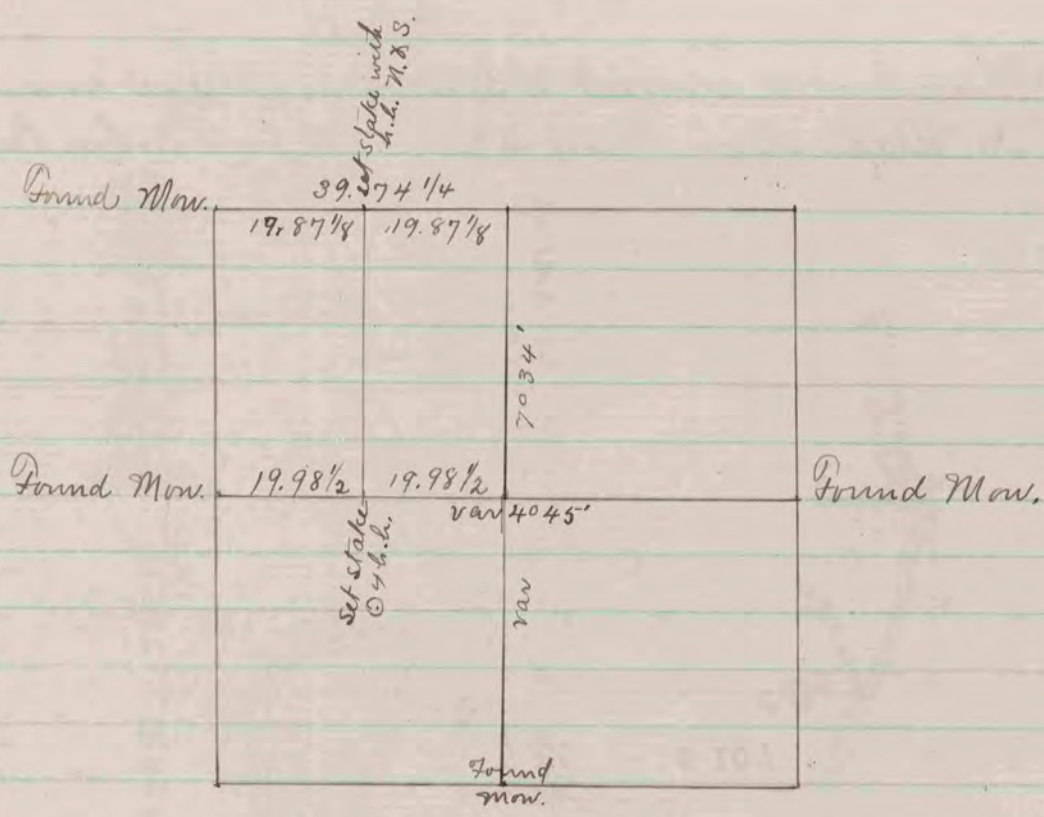


Set dark h.h. @ 4 h.h.  
Found stake set by Locke (rotten) set h.h. @ 4 h.h.



The above is a record & plat of a survey on Sec. 15 Harmony made May 26<sup>th</sup> 1873 by R. K. Lee  
 Dep. Co. Surveyor



The above is a record & plat of a survey made on Sec. 2 Harmony, May 27<sup>th</sup> 1873 by R. K. Lee  
 Dep. Co. Surveyor

COUNTY SURVEYOR  
RECORD 1859-1906