

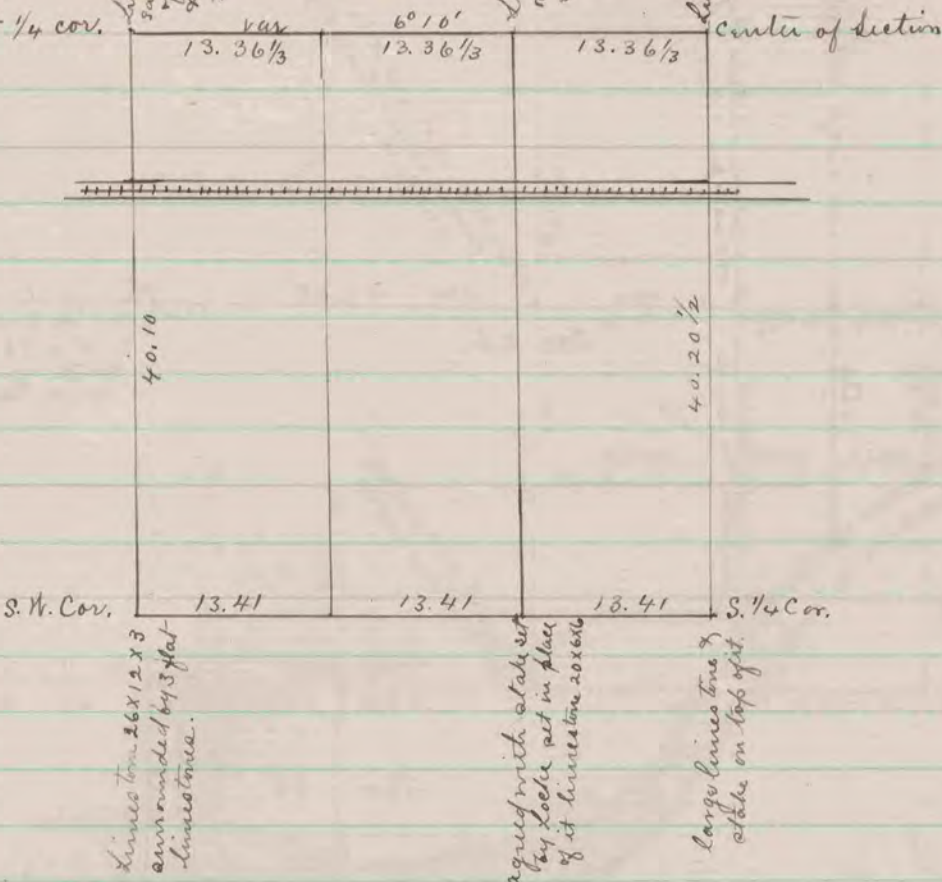
RECORD 1859-1906
COUNTY SURVEYOR

West 1/4 cor.

limestone at corner.
said stone is 26 links W
of fence on E side of road
& 50 L. S of fence on
N. side of road.

limestone 20x12x5
surrounded by 4 lime
stones.

limestone at corner in
center of section.



COUNTY SURVEYOR
RECORD 1859-1906

The above is a record & plat of a survey made on S.W. 1/4 of Sec. 35
Janesville, July 18, 19 1873 - by Edward Ruger, Co. Surveyor.

corner 14 links N of S.W. corner
found remains of old
stone also N.E. B.T. the stump
of S.E. B.T. had been dug up -
drove new stake deep & put on
top h.h. 18x13x11 x 0.5
small h.h.

Drove stake deep & put
on top of it hard head stone.
14x9x7

Found S.W. B.T. & stump
of N.W. B.T. set hard head
stone 21x13x10 flat side
up.

Found remains of old stake
also N.W. B.T. drove new
stake deep & put on top of it
hard stone 17x12x7

Sec. 13
69
Sec. cor.

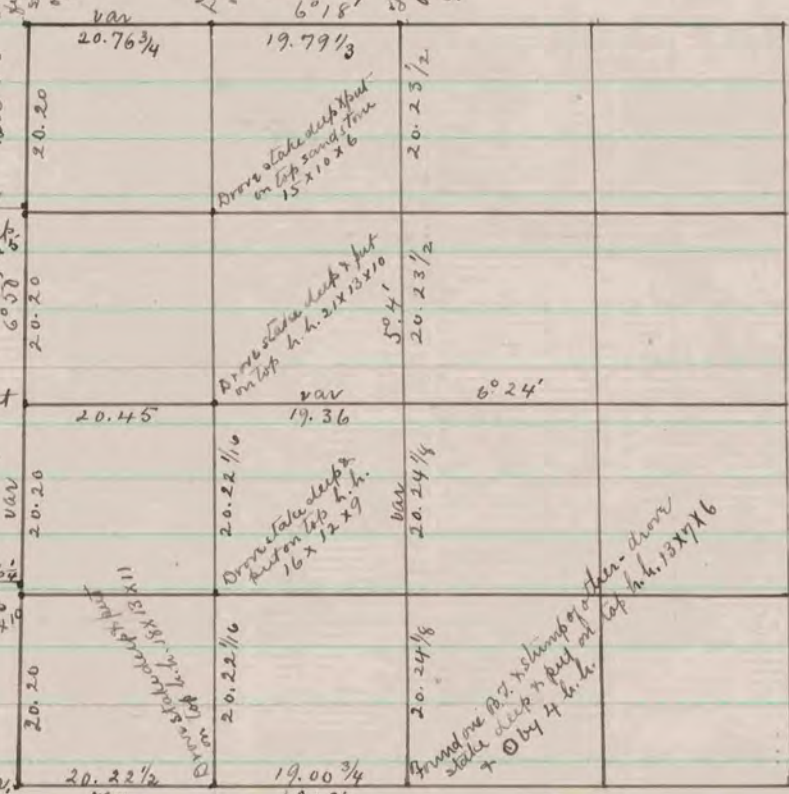
Drove stake deep
& put on top sand stone 22x9x6

Drove stake deep & put
on top sand stone 22x8x6

Found hard lead corner
stump of N.W. B.T. where
1/4 cor.

Drove stake deep
& put on top h.h. 16x12x10

Found irregular h.h. corner
said stone measured 21x21x13.
also found S.E. B.T. & stump of
N.E. B.T.



For corners on this line see section
17 Magnolia page 299.

The above is a record & plat of a survey made on
Sec. 18 Magnolia, Sept. 2-4-1873 by
Edward Ruger, Co. Surveyor.