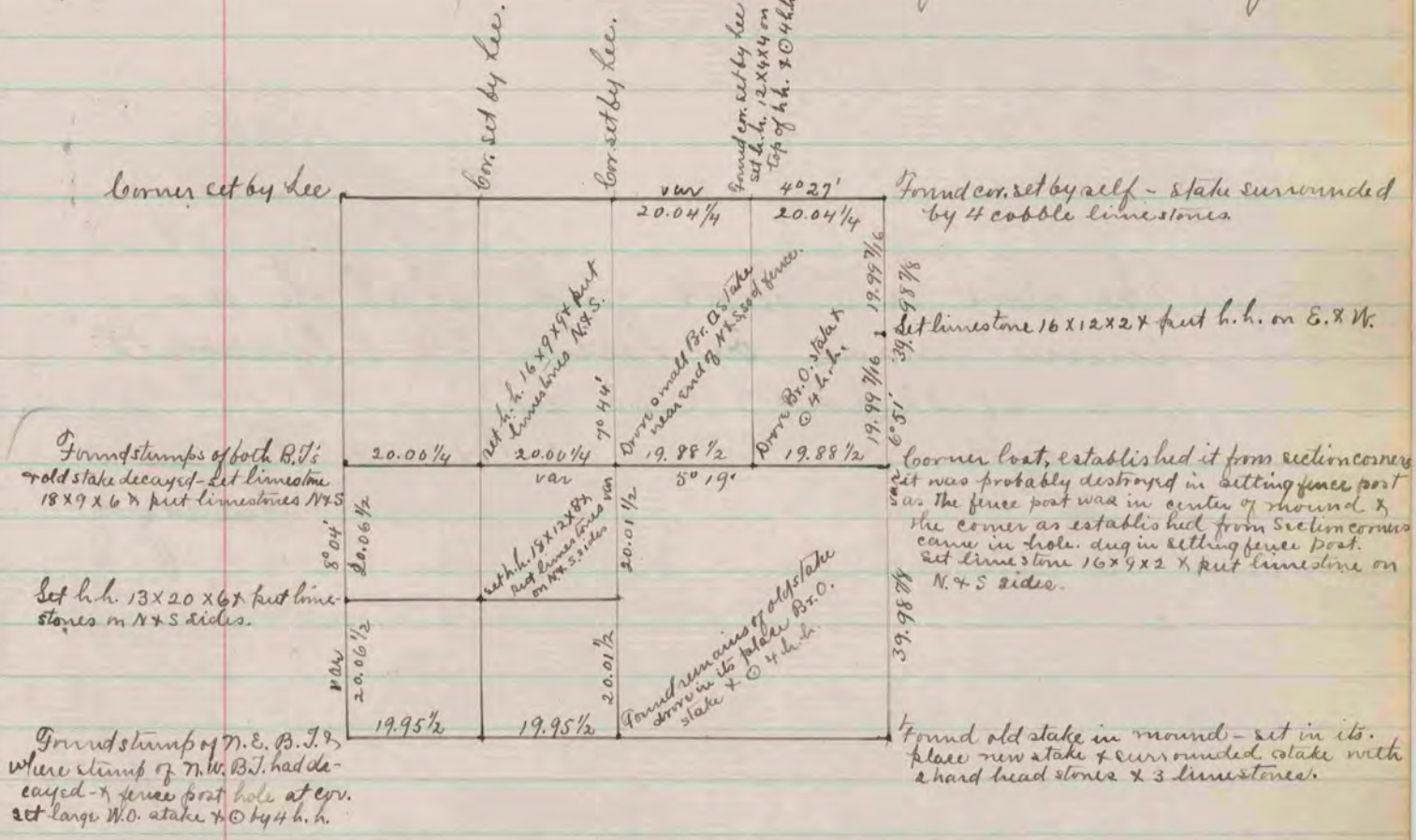


The above is a record & plat of a survey made on Section 15. Plymouth, Oct 21. 1873. & on SE 1/4 of SE 1/4 of Sec. 15. May 20. 1894 by Edward Ruger, County Surveyor.



The above is a record & plat of a survey made Nov. 11/12. 1873. on Sec. 23 Bradford - by Edward Ruger Co. Surveyor.

COUNTY SURVEYOR
RECORD 1859-1906