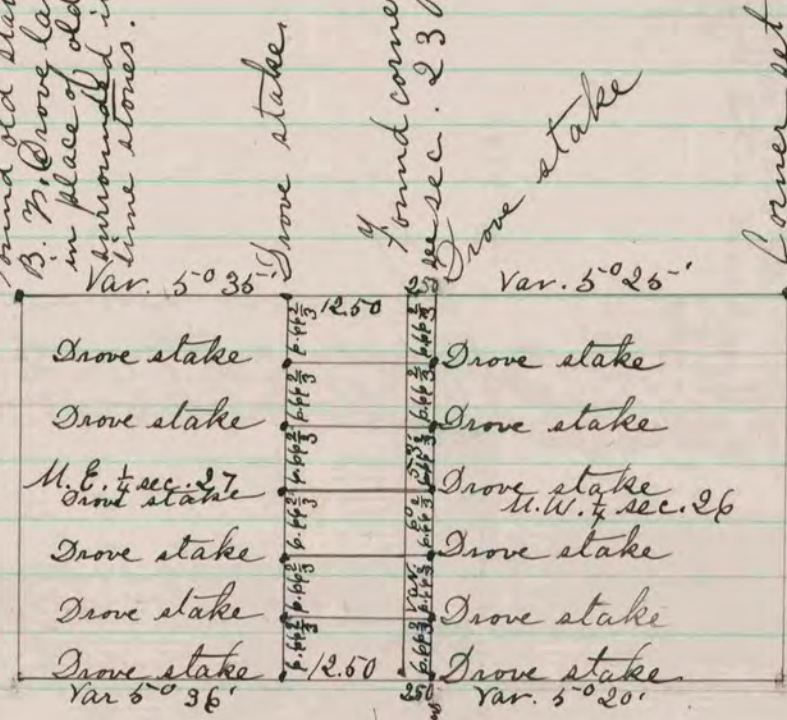


Found old stake & stump of B. P. Grove large new stake in place of old one and surrounded it with five lime stones.

Found corner set by self in sec. 23 Bradford

Corner set by self in sec. 23 Bradford.



Fence post at corner. Found remains of B. P. stump.

The above is a record and plat of a survey made on Dec. 13-1873 on the North West quarter of section 26 and the North East quarter of section 27 Bradford. Edward Ruger County Surveyor.