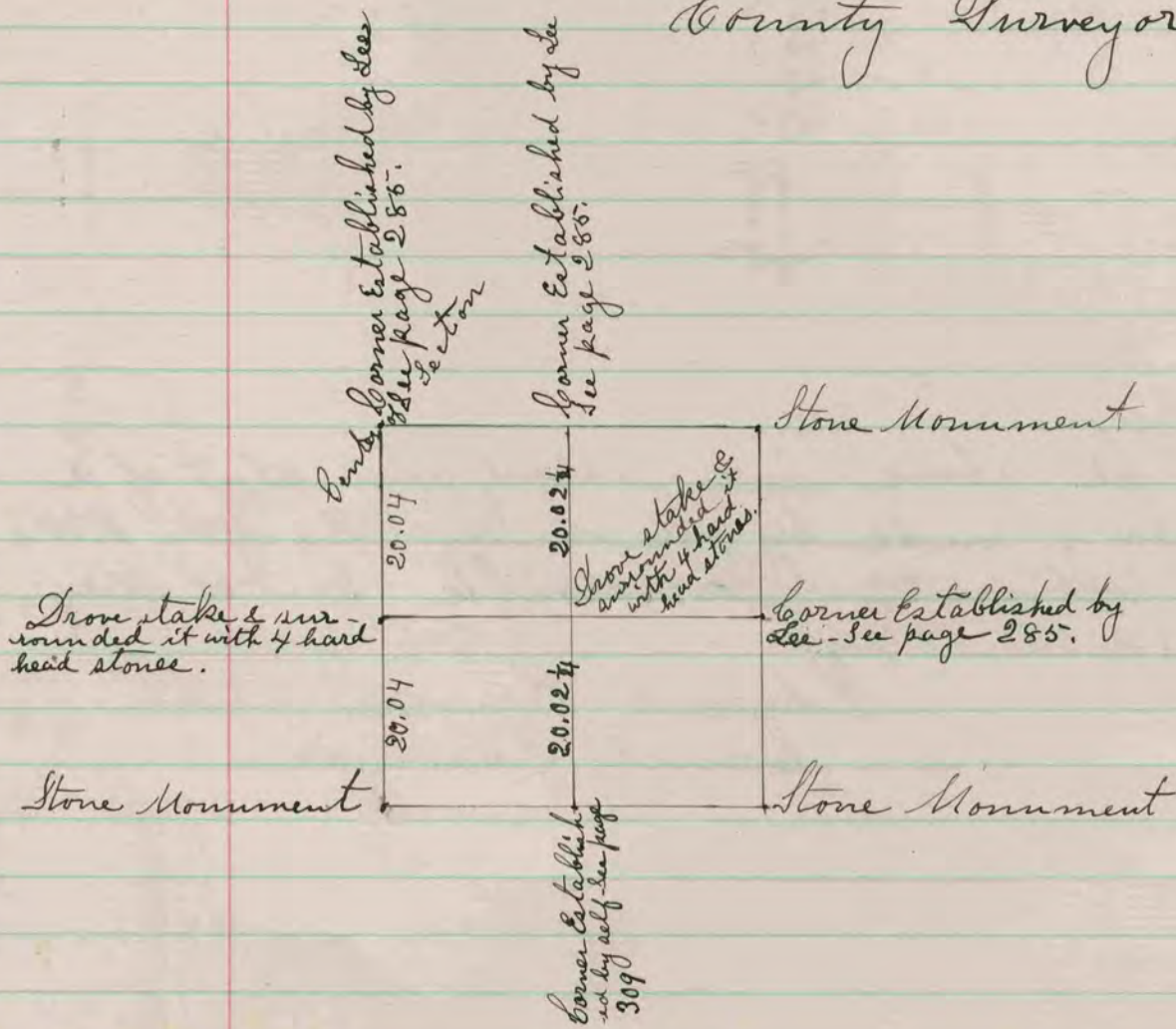


The above is a record and plat of a survey made by me on the S.E 1/4 of the S.E 1/4 of Section 15 Plymouth - May 20 - 1874

Edward Ringer  
County Surveyor -



The above is a record and plot of a survey made by me on the W. 1/2 of the S.E. 1/2 of Sec 14 Plymouth - May 20 - 1874.

Edward Ringer  
County Surveyor -