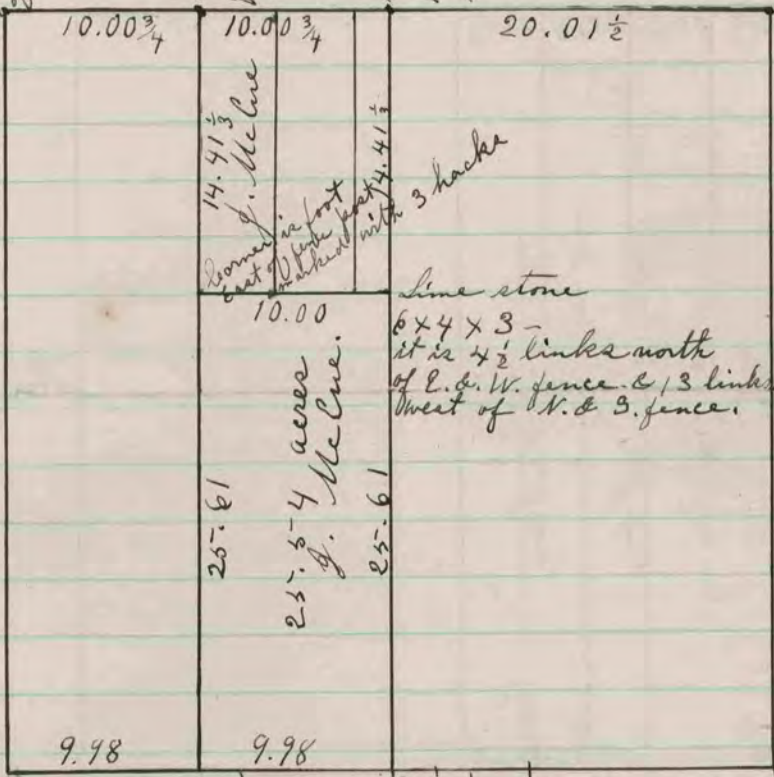


Corner established by self - see page 192 -
 of line stone 20 x 8 x 8 - stone is 38 1/2
 links north of present fence on south
 side of road & 5 links East of fence
 running south -

Line stone 10 x 7 x 2 - it is in line with
 fence running south & 40 1/2 links north
 of south road fence.

Corner established by self - see page
 192 - Line stone 18 x 11 x 6 surrounded
 by 4 line stones.

Stone Monument.



Set line stone 8 x 6 x 4
 said stone is on N.E. side
 of fence post close to it
 & is 11 links west of
 fence running North.
 Corner established by self -
 see page 281 red brick.
 it is North side of fence
 post & in line with
 fence running south
 & 5 3/4 links East of
 fence running North

The above is a record and plat of a survey
 made by me on the South East quarter
 of Section 31 Harmony, Dec. 29 - 1874
 Edward Ringer
 County Surveyor.

COUNTY SURVEYOR
 RECORD 1859-1906

COUNTY SURVEYOR
 RECORD 1859-1906