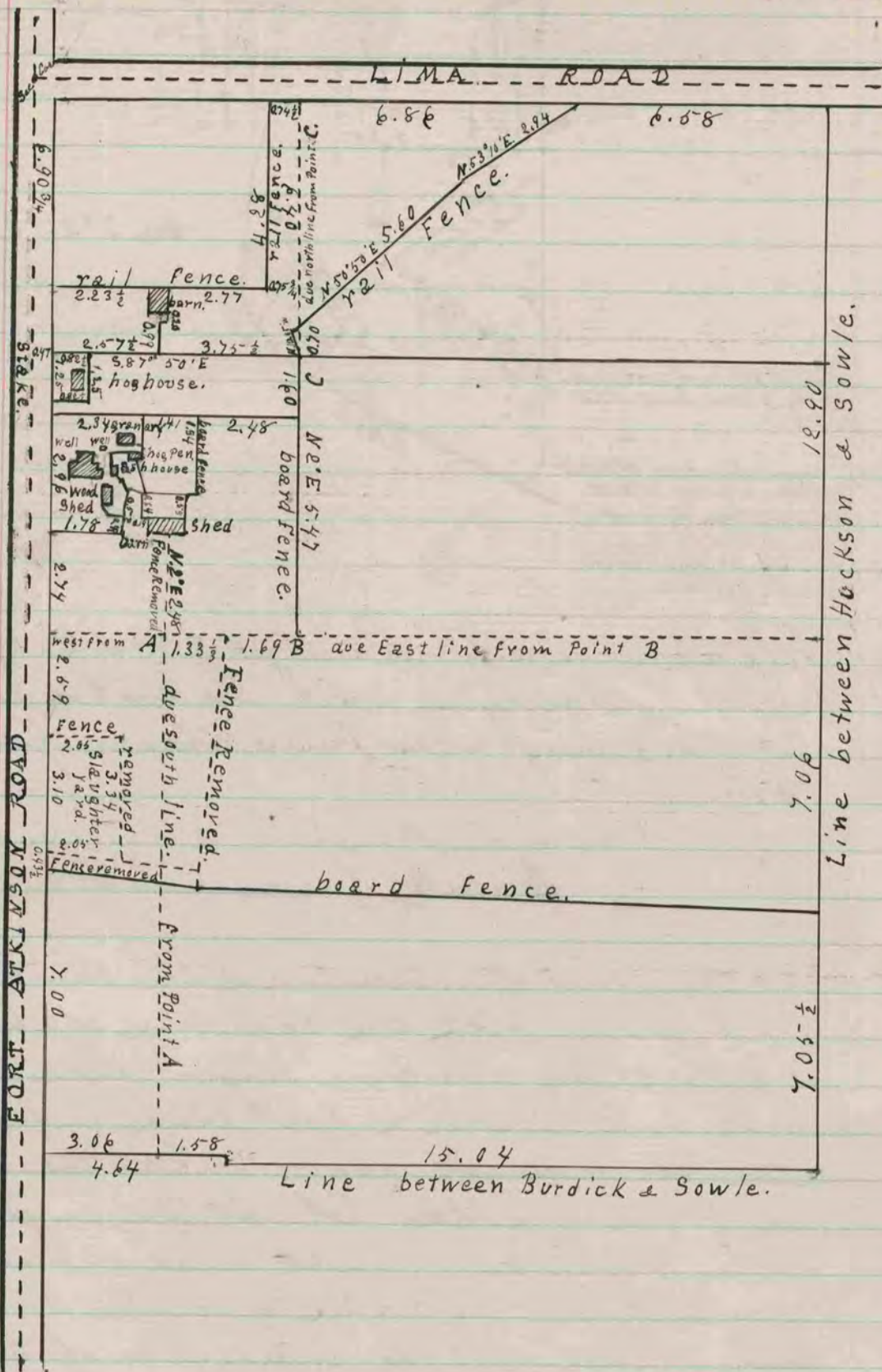


RECORD 1859-1906
COUNTY SURVEYOR



The above is a record & plat of a Survey made by me on that part of the W 1/2 of the N.W. 1/4 of Section 26 Milton pertaining to the Estate of the late James Sowle, showing the location of the buildings & fences as well as the location of fences standing at date of will but since removed; also due south line from point A - due west line from point A - due East line from point B - and due north line from point C. Distances given in chains & decimals of a chain. Courses for true Meridian. Var of Needle 6° 17' E. Scale 3/4 inch to 1 chain - Surveyed June 29 & 30. 1875 -

Edward Ruger
County Surveyor.