

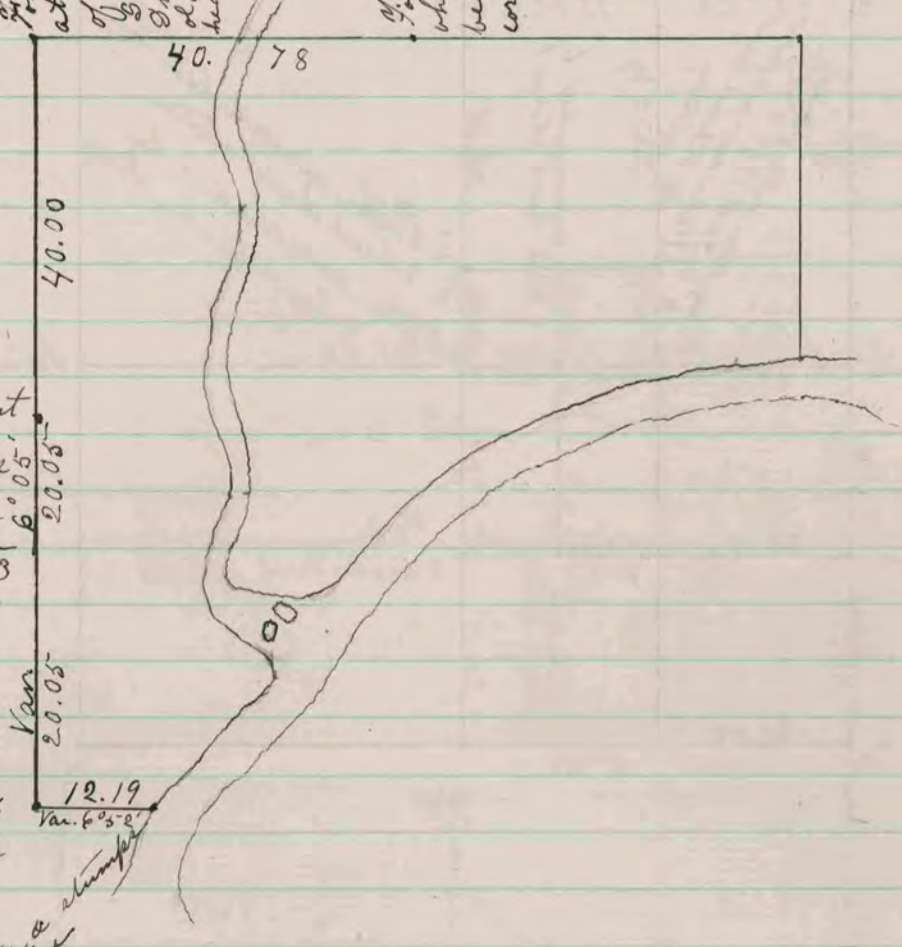
Found remains of old stake at corner also found stump of N.W. B. 7. & where stump of S.W. B. 7. had been dug up. Drove new stake in place of old one & surrounded it by 1 hard head & 3 lime stones.

Found stump of S.E. B. 7. & where stump of N.E. B. 7. had been dug up - did not establish corner.

Found old stake at corner - also found N.W. B. 7. and stump of S.W. B. 7. - drove new stake in place of old one & surrounded it by 1 lime & 3 hard head stones.

Found stump of N.E. B. 7. & where stump of S.W. B. 7. had been dug up. Drove stake & surrounded it by 4 stones.

Found old stake & stump of both B. 7. set lime 16 x 5 x 6.



The above is a record and plat of a Survey made by me on Section 19 Fulton August 18 & 19 - 1875 -

Edward Ruger  
County Surveyor.

COUNTY SURVEYOR  
RECORD 1859-1906