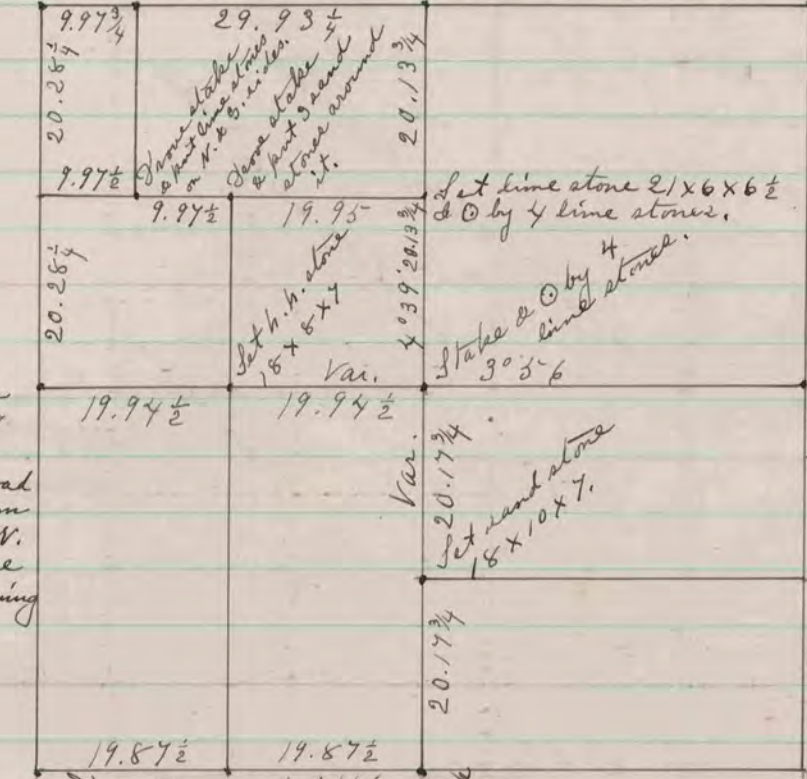


Found old stake - set sand stone 15" x 6" x 5" - & ⊙ by 2 line & 2 sand stones.

Set hard head stone 18" x 9" x 7" & put small lime stone on N. & S. sides.

Found stump of S.E. P. 7. & where stump of S.W. P. 7. had been dug up - Grove stakes & ⊙ by 4 line stones.

Found lime stone on corner - it is 47 links from corner fence post E. of road & 42 1/2 links from corner fence post W. of road & in line with fences running E. & W.



Set h. h. stone 17" x 11" x 9". The corner is in line with E. & W. fences, 450 links E. of fence on W. side of road. Grove stake & put h. h. stone on N. & S. sides. Var. 4° 10'

Found old stake & stump of both P. 6. & N.W. P. 7. stump 5.02 distant instead of 5.62 - Grove new stake in place of old one & ⊙ by a lot of small stones.

Found old stake & N.W. P. 7. & stump of S.W. P. 7. - set H. H. stone 18" x 9" x 9."

The above is a record and plat of a survey made by me on Section 22 soon January 7 & 8 - 1879
 Edward Ruger
 County Surveyor,

COUNTY SURVEYOR
 RECORD 1859-1906