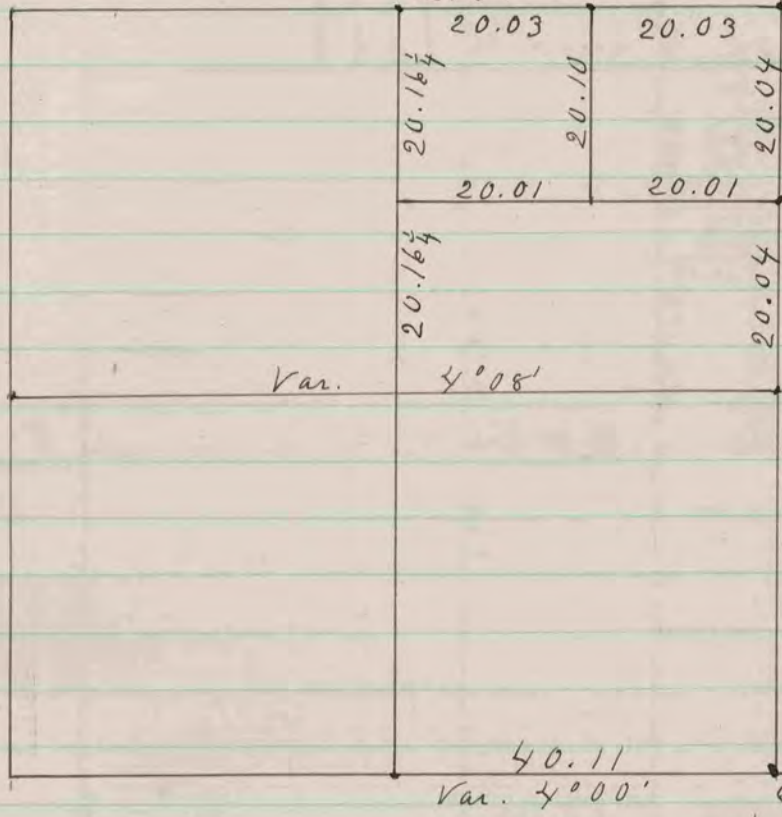


Found corner established by self in a former survey - see page 458.



Found old stake - 6 1/2 links Sof since post & found stumps of both B. & C. - set in place of old stake - stone 13x6x5 - & it by 4 lime stone.

Set lime stone 21x8x3 & it by 4 H. H. stones.

Found old stake & stumps of the N. W. B. & also found a B. to the S. E. of which I had no notes. Also found old stake - set lime stone 20x7x6 & it by 4 H. H. stones.

Set lime stone 16x9x5 - & it by 4 H. H. stones.

Found old stake in the ground - also found N. W. B. to the stump of N. E. B. set lime stone 22x8x6 & it by 3 H. H. & 1 lime stone.

Found large lime stone at corner.

Found old stake - set lime stone 24x6x5 - & it by 4 H. H. stones.

The above is a record and plat of a survey made by me on Section 33 Bradford June 5th 1878

Edward Ruger
County Surveyor.

ROYALTY COUNTY SURVEYOR
REC'D 1878
COUNTY SURVEYOR
RECORD 1859-1906