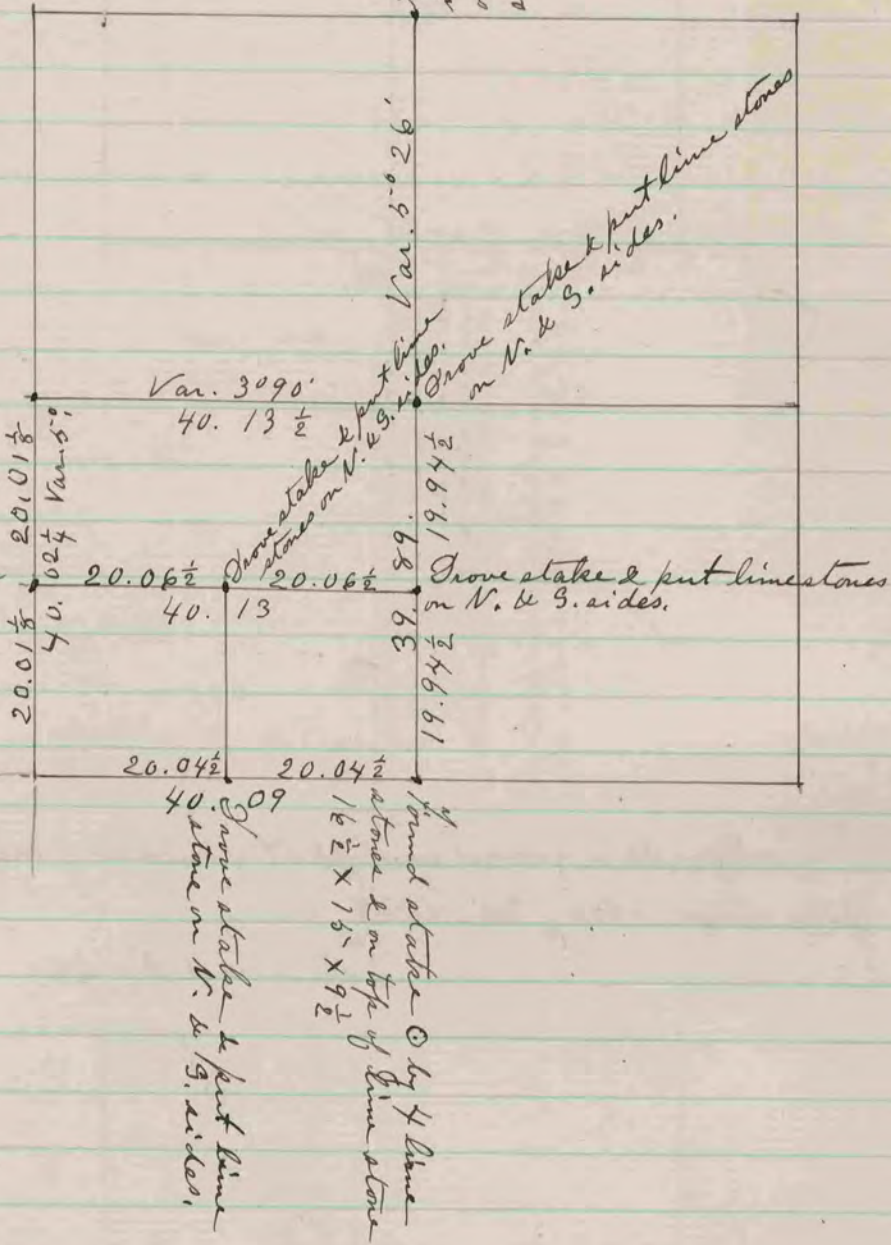


COUNTY SURVEYOR
 RECORD 1859-1906

26

Found stake with lime
 stone on N. & S. sides

Drove stakes & put lime
 stone on N. & S. sides



The above is a record and plat of a survey
 made by me on Section 24 Rock - May
 18-1885-

Edward Ruger
 County Surveyor

COUNTY SURVEYOR
 RECORD 1859-1906