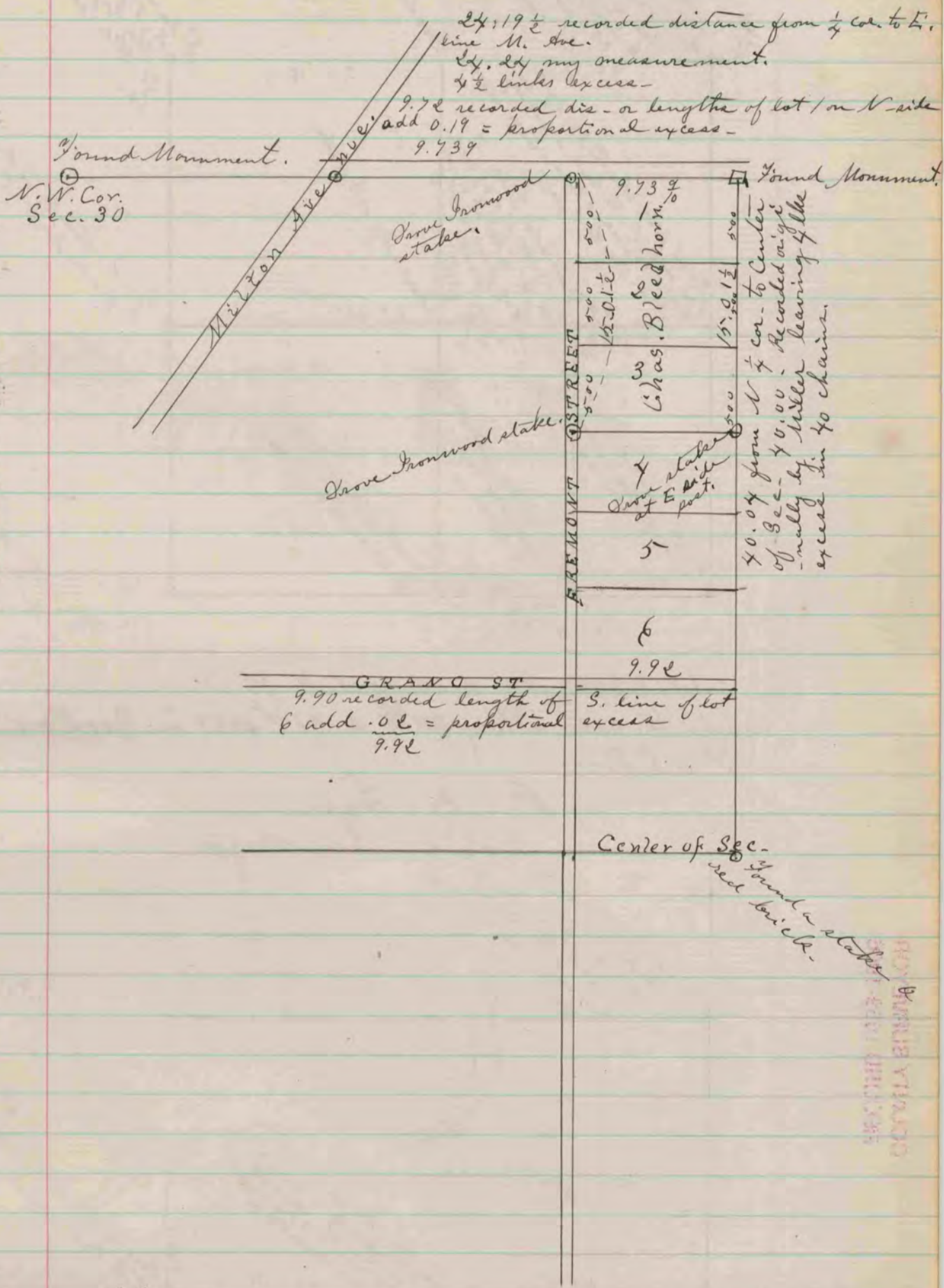


COUNTY SURVEYOR  
RECORD 1859-1906



The above is a record & plat of a Survey made by  
 me on Section 30, Harmony, in S. D. Smith's addition  
 to Janesville for the purpose of determining the bounda-  
 ries of Lots 1, 2 & 3 in said addition, & was made  
 May 26<sup>th</sup> & 27<sup>th</sup> 1881  
 R. K. Lee  
 Co. Surveyor.