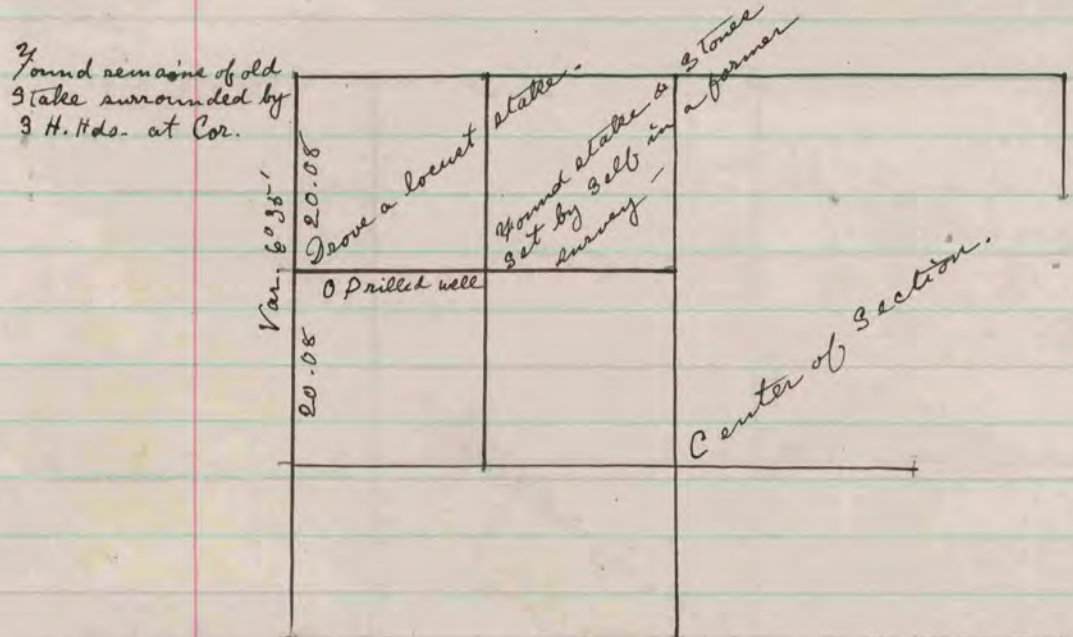


The above is a record & plat of a Survey made by me June 27th & 28th 1881 on Section 35 Clinton. R. K Lee Co. Surveyor



The above is a record & plat of a Survey made by me July 11th 1881, on Section 27 Magnolia for the purpose of determining the location of a well, The well which is drilled was found to be wholly on the S.W. 1/4 of N.W. 1/4 of Sec. al though the line does intersect the Well house about 10 inches South of the North face of the same at the N.W. corner thereof.
R. K. Lee. Co. Surveyor.

COUNTY SURVEYOR
RECORD 1859-1906