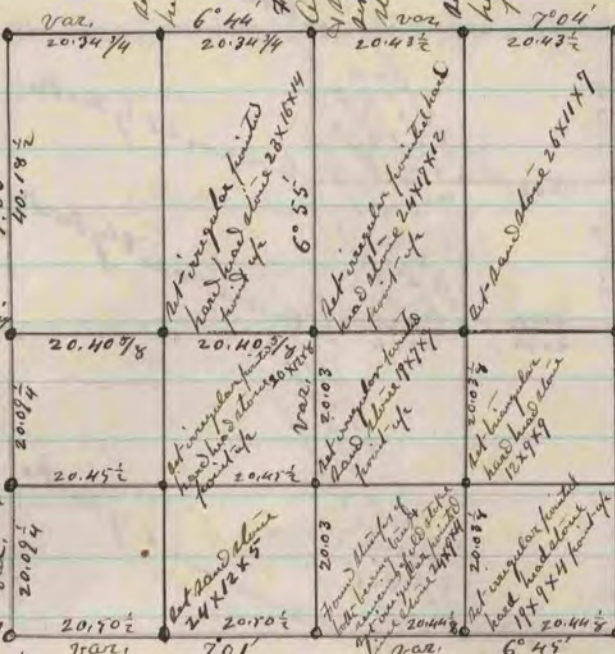


Found both bearing trees and remains of old stake - set irregular pointed head stone 20x17x5 point up



Corner lost and bearing trees destroyed on working road - established quarter corner from section

Corner - then measured off & found remains of old bearing tree. Set irregular pointed head stone 32x15x13 point up

Set irregular pointed head stone 22x12x9 point up

Found stumps of both bearing trees & remains of old stake - West bearing tree is 77 links distant instead of 71 - set irregular pointed head stone 24x15x9

Found remains of stump of bearing tree & remains of old stake set irregular pointed head stone 34x16x12 point up

Found remains of old stake also found both bearing trees & stump of north bearing tree - set flat hard head stone 24x18x6 point up

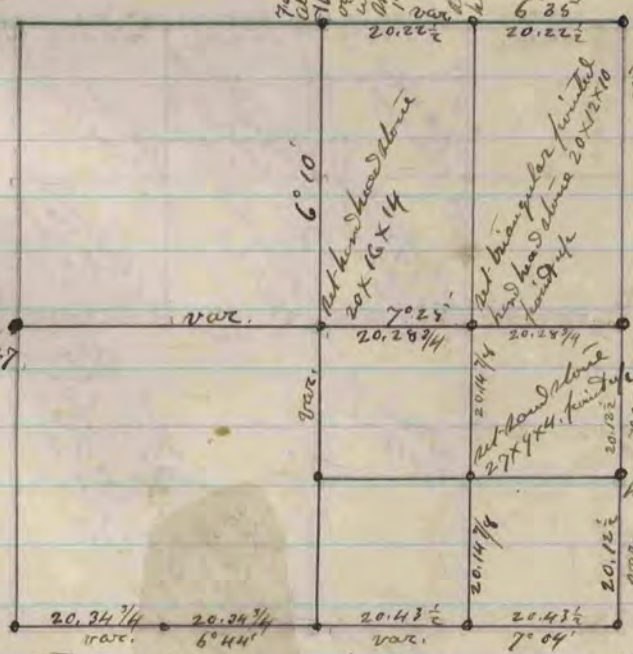
The above is a plot and record of a survey made by me, May 26, 27 & 28, 1870, on Section 17 Magnolia

Edward Ruyer

Deft. Co. Surveyor

CO. INTY SURVEYOR
RECORDED 2 1869-1900

Found remains of old stake & remains of stumps of bearing trees - set head stone 17x12x7 & surrounded it with 4 sand stones



Found stone at corner set in its place irregular pointed head stone 25x10x9 & surrounded it by 4 sand stones

Stone at corner set by Tucke

Set irregular pointed head stone 19x14x13, point up

See Section 17 above for corners of South side of this section

The above is a plot and record of a survey made by me, May 29 & 30, 1870, on Section 8 Magnolia

Edward Ruyer

Deft. Co. Surveyor