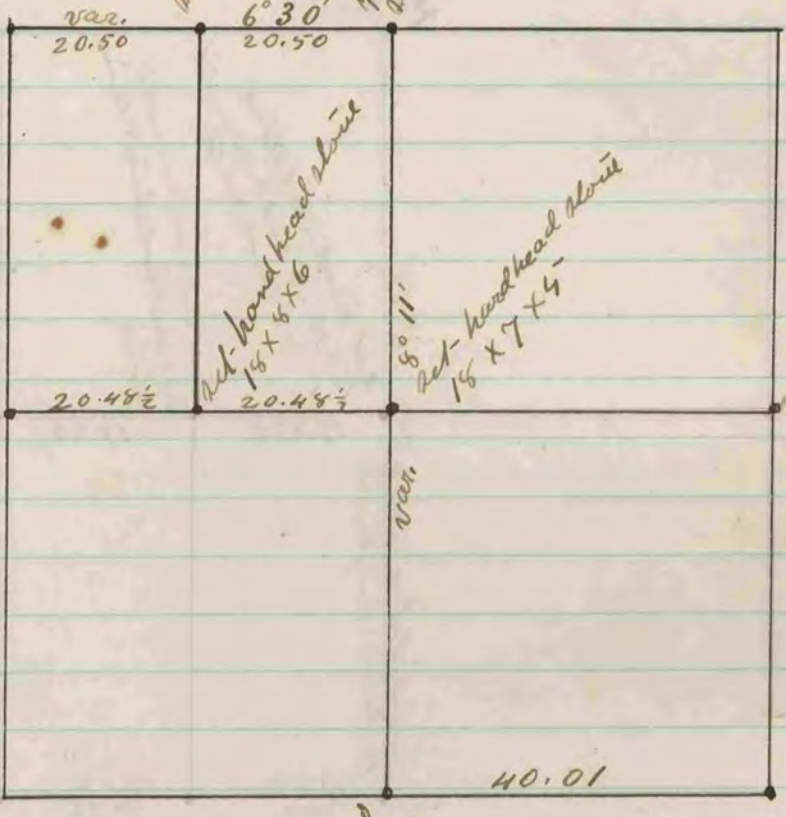


See Section 22 page 195-



Set-line stone 14 X 6 X 5

Found remaining of old stone
Set-line stone 36 X 10 X 4

Set-hand head stone
15 X 5 X 6

Set-hand head stone
15 X 7 X 4

Found stone on corner

Found hand head stone.

Found remaining of old stone - also
found where stump of B. H.
had been dug up - Set-hand
head stone 20 X 5 X 7

Found old stone and
where stump of
both trees had been
dug up - Set-hand
head 26 X 14 X 9

COUNTY SURVEYOR
RECORD 2 1839-1900

The above is a record and plat of a survey
made by me on Section 26 Portler April
10-1878

Edward Ruyter
County Surveyor