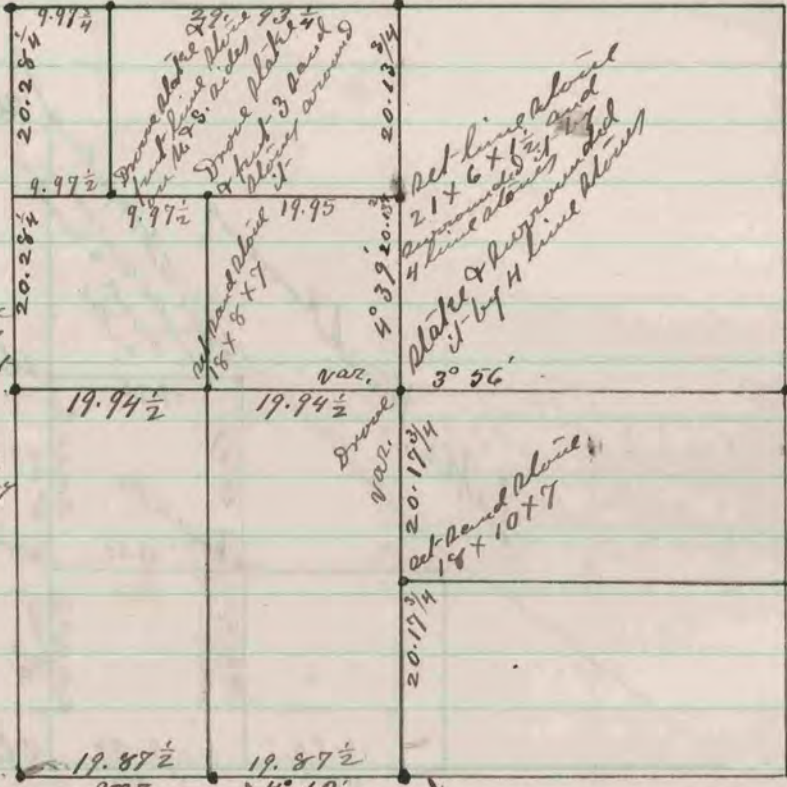


Found old plate, set hand stone
15 x 6 x 5 and surrounded by
2 line stones and 2 hand stones

Set hand head stone 18 x 9 x 7
7 feet small line stones on
North and South sides

Found blimp of S. E. B. J. &
where blimp of S. W. B. J.
had been dug up. Drove
plate and surrounded it with
4 line stones



Found line stone on corner it is 47 links from corner fence east of road, and 42 1/2 links from corner fence front west of road, and in line with fence running east & west

Found old plate and N. W. B. J. blimp of S. W. B. J. - set hand head stone 18 x 9 x 7

Set hand head stone 18 x 9 x 7
The corner is in line with
E & W. fence, and 50
links east of fence on
west side of road.

Drove plate 15 x 8 x 7
Set hand head stone on
the North & South sides

Found old plate and blimp
of S. W. B. J. - N. W. B. J.
blimp 5.02 distant instead
in the place of old one
and surrounded it by
a lot of small stones.

The above is a record and plat of a
survey made by me on section 22 Avon
January 7 & 8 - 1879

Edward Rieger
County Surveyor

RECORDED & INDEXED
COUNTY SURVEYOR
RECORD 2 1869-1900