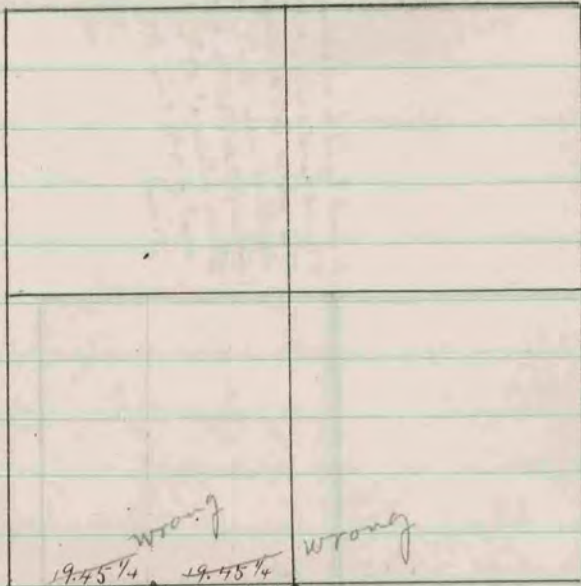


41-270



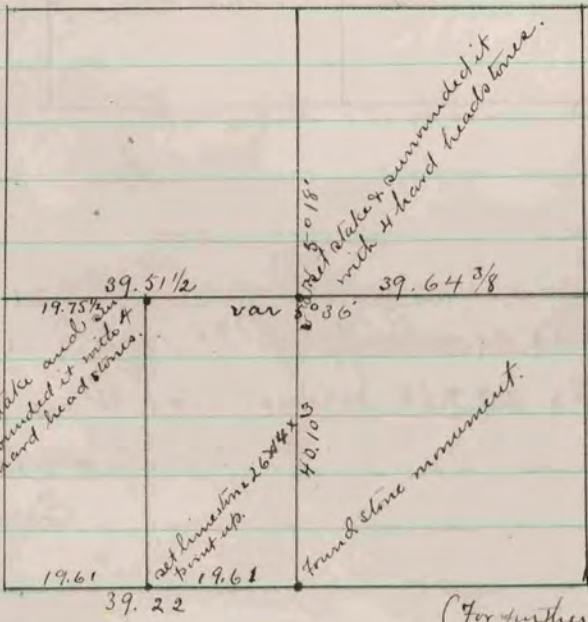
see page 204

19.45 1/4
 38.90 1/2 var. 3° 10'
 new near stake in place of
 old one, & surrounded by 3
 hand head stones & three plate
 struck old stake & large hand
 stone struck E. on set in former
 survey, also SE 1/4 stump &
 NW 1/4 7. - have new stake in
 place of old & put hand head stone
 close to stake on E. side.

The above is a record & plat of a survey made by me on
 Section 18, Johnston, May. 31. 1886.

Edward Ruger
 County Surveyor

42-164



19.75 1/2
 at stake and
 rounded it into 4
 hand head stones.

at limestone
 point up
 19.61

40.10 1/2
 hand stone monument.

at stake & surrounded it
 with 4 hand head stones.

(For further survey see page 29)

The above is a record & plat of a survey made by me on
 Section 3, Harmony, Oct. 20. 1886.

Edward Ruger
 County Surveyor