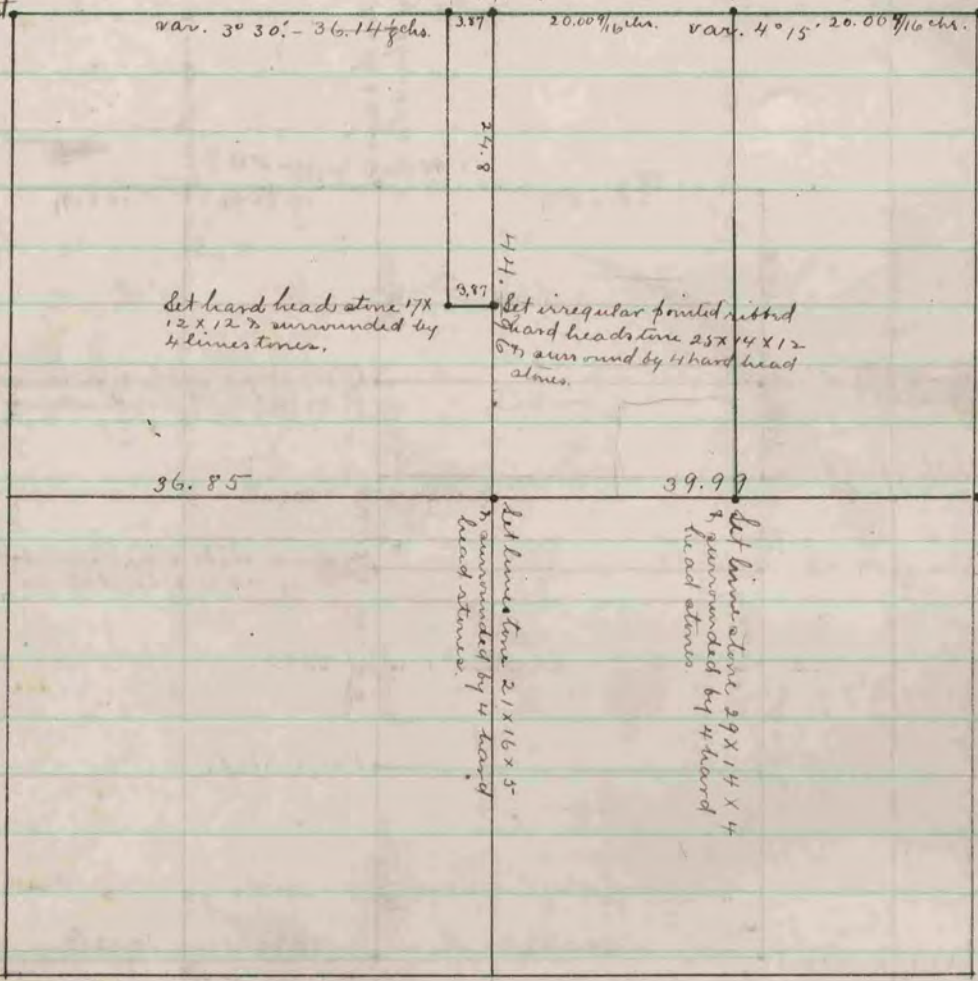


43-260m

Found stone monument



Set limestone 16x13x7 and 9
 surrounded by 4 hard
 head stones.
 9x20x16
 surrounded by 4 hard
 head stones.
 9.9 1/8

Set limestone 19x10x 1/2
 surrounded by 4 hard head
 stones.

Found remains of old stake
 & stump of S.E. Pt. act point
 ed stump 19x10x17 x seen
 around it by 4 hard head
 stones. The distance to
 S.E. Pt. stump is 47.57 1/2 chs.
 in notes of 4.61 chs. as

The above is a record & plat of a survey made by me on
 Section 6, Johnston, Nov. 23 & 24, 1886.

Edward Ruggie
 County Surveyor

COUNTY SURVEYOR
 RECORD 2 1869-1900