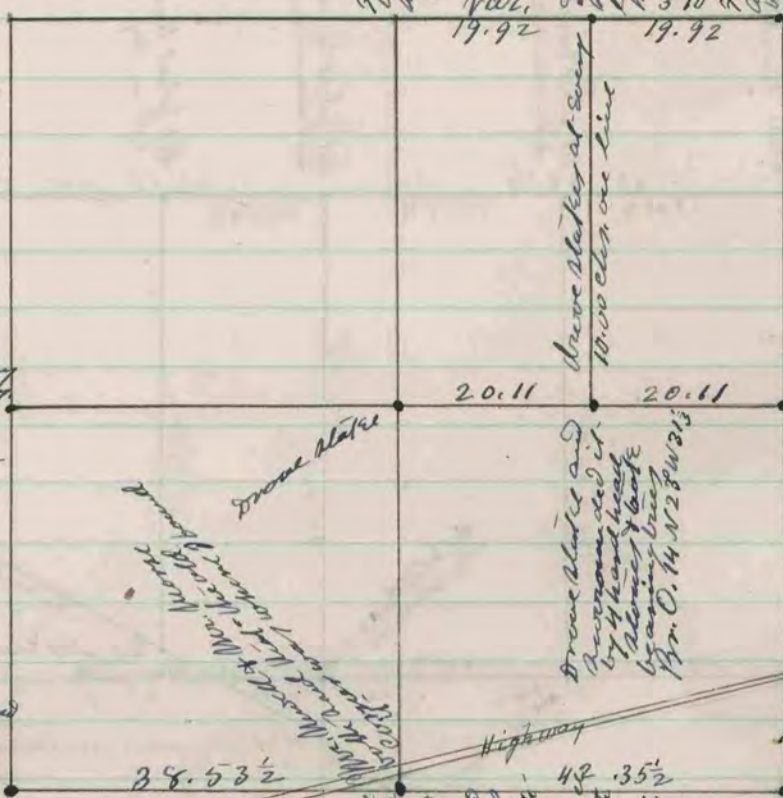


R. 14 2



Found Corner as set
by half in former
Survey - See page
203 - Book 2

Stone Slakes and
surrounded it by 2
lines and 2 small
hand head stones

Found remaining of old stone
and slakes of North
line, Stone was slake
in place of the old one
& surrounded it with
2 lines and 2 hand
head stones -

Found Corner set by
half in former Survey
See page 13 Book 2 -
Stone was slake in
the place of the old
one & surrounded it
by 4 hand head stones

Found of corner
set by half in former
Survey - See page 13
Book 2 - Stone was
slake in place of the
old one & surrounded
it by 4 hand head
stones

Stone Slakes and
surrounded it by
4 hand head
stones & book
by survey line
Pr. O. 14 N 2 S W 3 1/2

Found old slake & when
the slake of ball bearing
was had decayed in
the ground, Stone
head slake in the place
of the old one & surrounded
it by 4 hand head stones
& 4 hand head bearing
Pr. O. 7 S. 37° 2.5
W. O. 7 N. 52.17

Found Corner set by
half in former Survey
Set in place of hand
stone a marble slab
24 x 8 x 2 pointed at top
& surrounded it by 2
hand head & 1 line
stone, set line
stone in lot 2 - The
Corner is 2 lines
west of N. 7 S. fence

Found a hand head stone
11 x 8 x 7 set in hole
wood by slake in hole
Set in place of hand
stone a line stone
24 x 9 x 4 1/2 and surrounded
it by 4 hand head stones
The Corner is 1/2
of road east of West
1/2 road running north
it is 1 1/2 feet north of
right line between
the S. W. 1/4 & 2. Section
Corners -

Found old slake of corner,
set in place of old
stone an iron 1 1/2 inches
in diameter set on
top of it, line stone 17 x
7 x 5 1/2 surrounded it by
4 hand head stones -
The Corner is in line with
piece running east & in
line with piece running
North on North side
of road 7 1/2 feet west
of barn yard fence
of road

The above is a record & plat of a survey made by me
on Sec. 22 Johnstown Dec. 11. 1883.

Edward Ruge
County Surveyor

COUNTY SURVEYOR
RECORD 2 1869-1900