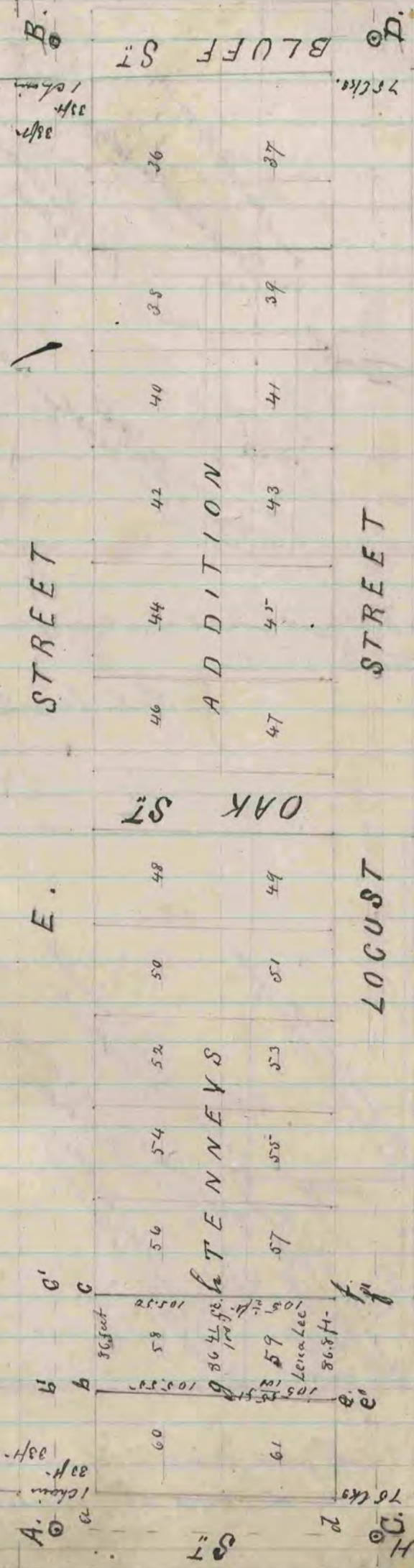


Below is a record and plat of a survey made by me June 16<sup>th</sup> 1880 of lot No 59 in  
Tenny's Addition to the City of Beloit. On the N.W. corner of said lot I drove a piece of  
7/16 round iron 30 inches long and four inches broad's surface placed on top of iron. On the N.E.  
corner, drove piece of 7/16 round iron 18 1/2 inches long with triangular limestone 6 1/2 inches on top, upon it, At S.E.  
corner drove 7/16 round iron 40 1/4 inches long with limestone 6 1/2 inches on top, upon it, At S.W. corner  
drove 7/16 round iron 28 1/2 inches long with limestone 12 x 6 x 4 1/2 inches on top, upon it.

R. B. D. & E.  
Desh Co. Surveyor.



Found at A, B, C and D. stone monuments established at the interesting corner lines  
of the streets. I measure from A to B. using an adjusted steel chain 100 feet in length  
and find distance to be 1293 2/10 feet. The recorded distance being 1290 8/10 feet - making an  
error on this line of 2.9 feet. I measure from C to D. and find distance to be 1301 9/10 feet. The  
recorded distance being 1287 feet. showing an error of 14.5 feet. I measure A. C. and  
find recorded distance to be correct, being 268 10/100 feet.

I next find point marked "A" in center line of Eighth St. and 33 feet S. from A. also find b' in line AB  
at distance of 119.07 feet from monument at A. and make c' in same line 86 feet distant from b'.

I next find e' in line C D and make distance C e' = 116.8 feet I then find point f' in same line 86.8 ft from e'  
From the points b' and c' the distance to b and c is 33 feet and from the points e' and f' the distance to  
e and f is 24 9/10 feet. G. is the point established by my survey as the N.W. corner of lot 59 and is equi-distant  
from b and c being 108 5/10 feet from each. h is the point established by my survey as the N.E. corner of lot 59 and  
is equi-distant from c and d being 108 5/10 feet from each. e and f are the S.W. and S.E. corners respectively of lot 59