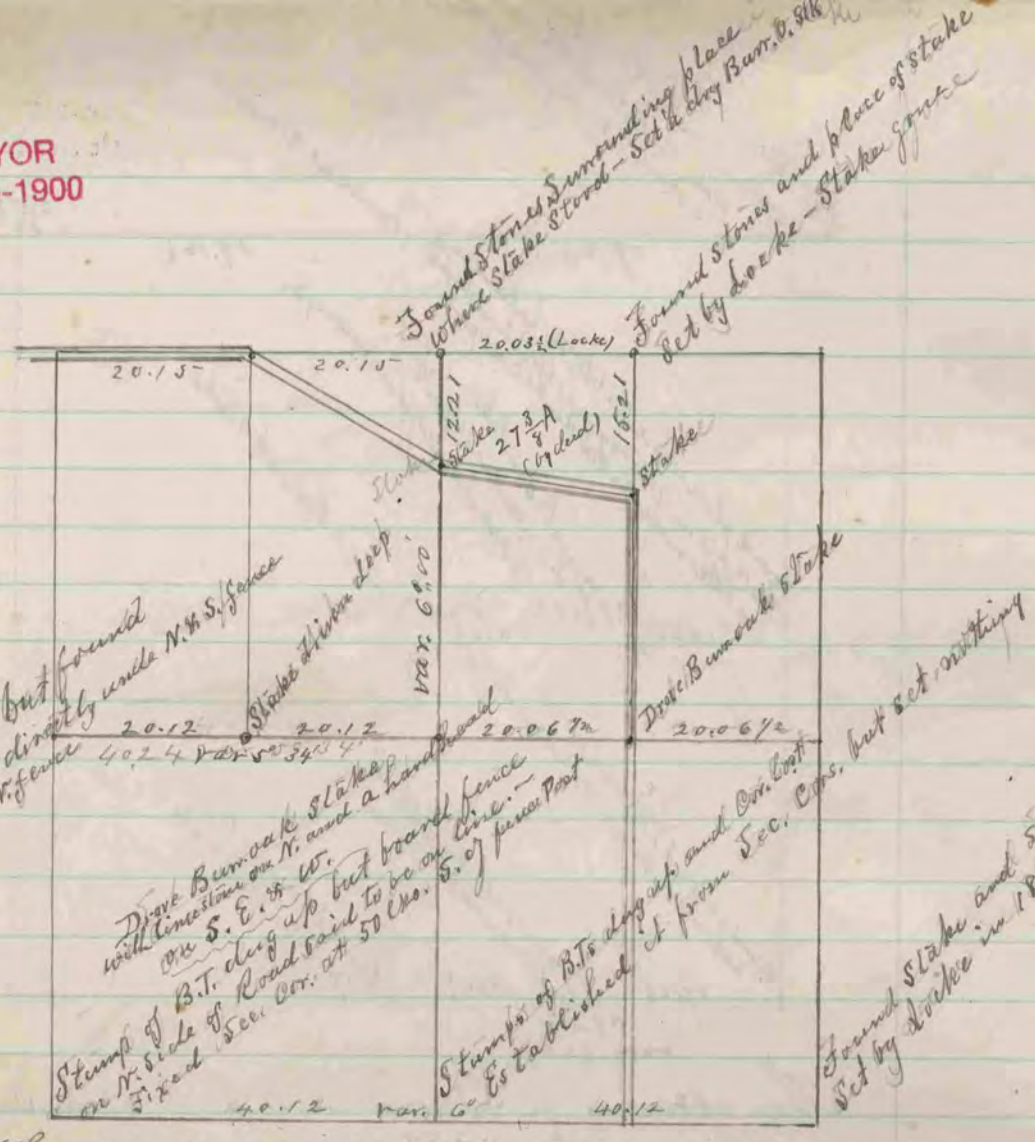
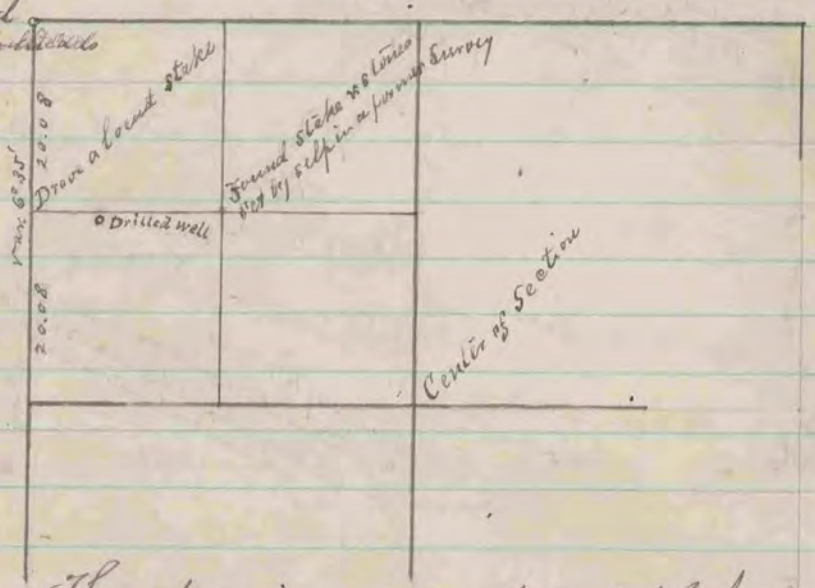


COUNTY SURVEYOR  
RECORD 2 1869-1900



The above is a record and plat of a survey made by me June 27<sup>th</sup> & 28<sup>th</sup> 1881 on Section 35 Clinton  
R. K. Lee, Co. Surveyor.

Found remains of old stake surrounded by 3 handboards at Cor.



The above is a record and plat of a survey made by me July 11<sup>th</sup> 1881, on Section 27, Magnolia, for the purpose of determining the location of a well. The well, which is drilled, was found to be wholly on the S.W. 1/4 of N.W. 1/4 of Sec. although the line does intersect the well-house about 10 inches south of the North face of the <sup>same</sup> at the N.W. cor. thereof.  
R. K. Lee  
Co. Surveyor