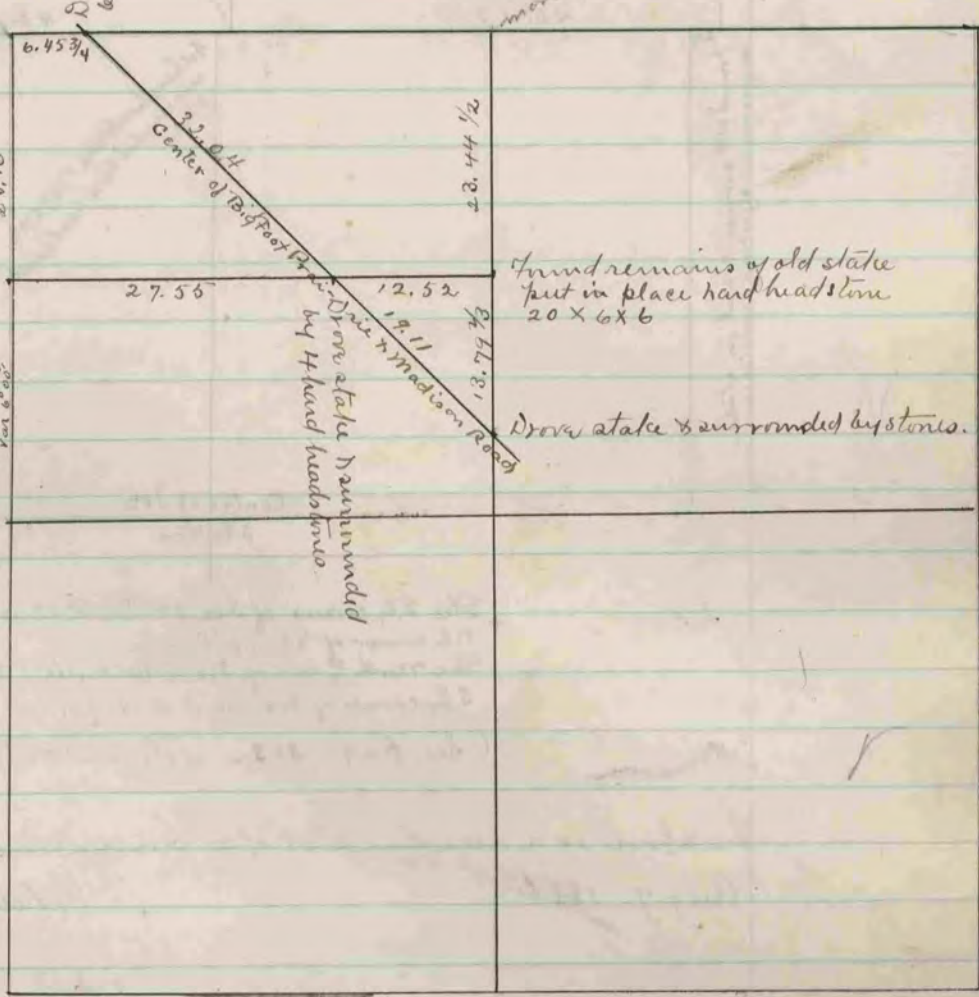


16-120



Set limestone 14 1/2 X 7 X 1 1/2 & surrounded by 3 line & 1 hard head stone.

Found remains of old stake put in place hard headstone 20 X 6 X 6

Drove stake & surrounded by stones.

The above is a record & plat of a survey made by me on Section 1 Harmony, July 21-1884.

Edward Puzer
County Surveyor