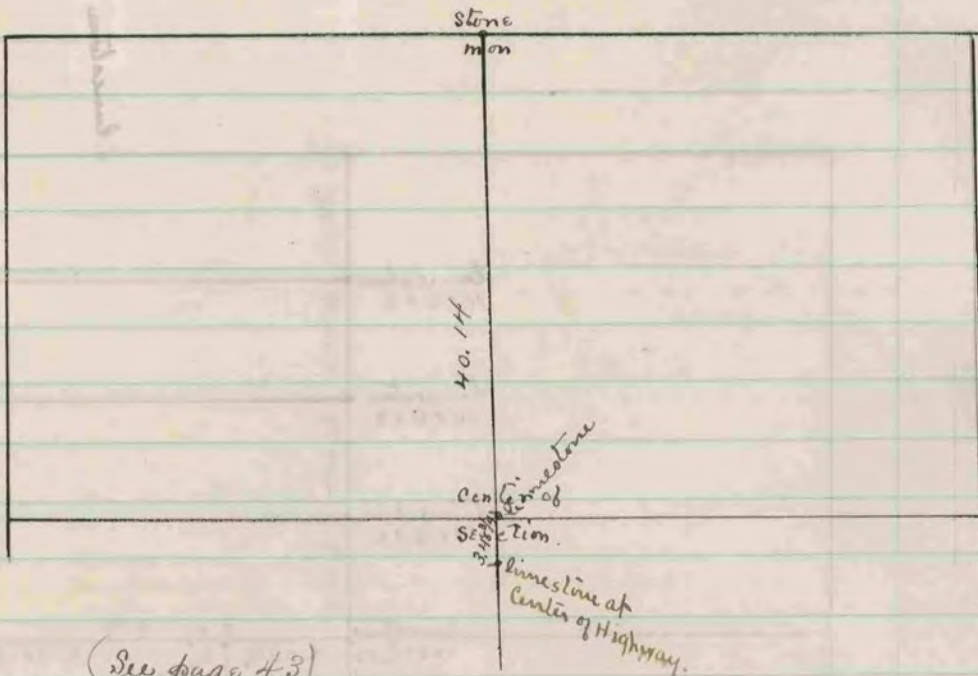


S. 38



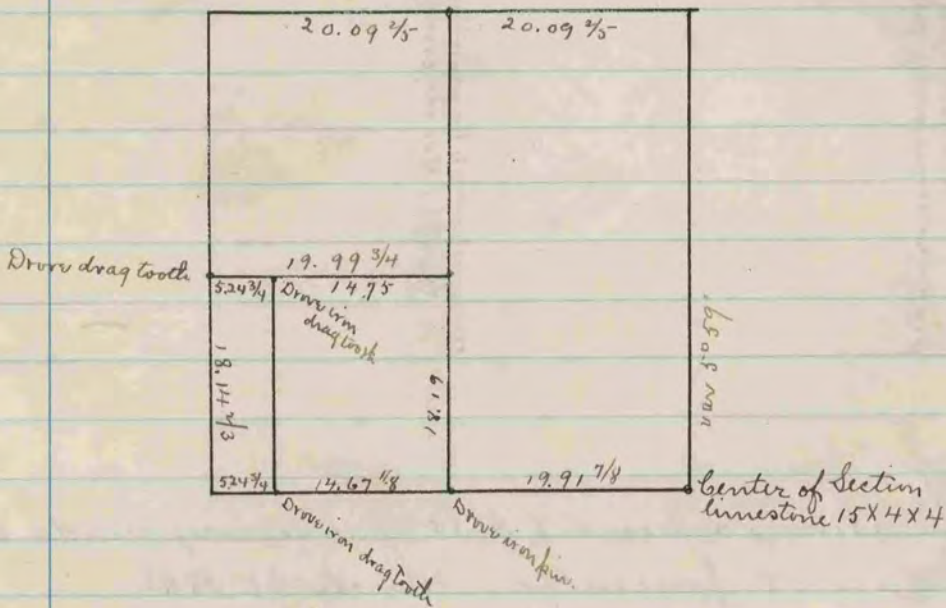
(See page 43)

The above is a record & plat of a survey made by me on
Sec. 3. La Prairie June 25, 1883.

Edward Ruger
County Surveyor

S. 116

Drawn with surveyor's
by hand head & chain.



The above is a record & plat of a survey made by me on the
NW 1/4 of Sec. 26. Union, Dec. 5th 1883.

Edward Ruger
County Surveyor